

Indexing Plungers pull knob, Style A, metric

Item description/product images

METRIC
Parts

Description

Material:

- Steel version, locking pin hardened: quality class 5.8
- Stainless steel version, locking pin hardened: threaded sleeve 1.4305 locking pin 1.4034
- Stainless steel version, locking pin not hardened: threaded sleeve 1.4305 locking pin 1.4305

Mushroom knob in black gray thermoplastic

Version:

- Steel version, locking pin hardened: black oxide finish, locking pin ground
- Stainless steel version, locking pin hardened: natural finish, locking pin ground
- Stainless steel version, locking pin not hardened: natural finish, locking pin ground

Note:

Indexing plungers are used to prevent any change in locking position due to lateral forces. A new locking position can only be set after the pin has been manually disengaged.

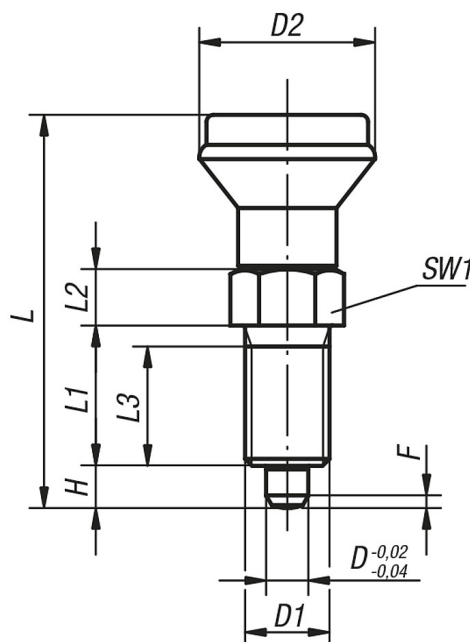
Style C or D is recommended for applications in which the pin is disengaged over extended periods and should be prevented from springing back.

On request:

Special versions and spacer rings.

Drawings

Style A
non-lockout type
without locknut



Indexing Plungers pull knob, Style A, metric

Item No. Steel hardened	Item No. Stainless steel hardened	Item No. Stainless steel not hardened	Style	D	D1	D2	L	L1	L2	L3	H	SW1	F x 30°	Spring force initial pressure F1 approx. N	Spring force final pressure F2 approx. N
K0339.1105	K0339.01105	K0339.11105	A	5	M10x1	21	47	17	7	15	5	13	1,3	5	12
K0339.1206	K0339.01206	K0339.11206	A	6	M12x1,5	25	56	20	8	17	6	14	1,8	6	14
K0339.1308	K0339.01308	K0339.11308	A	8	M16x1,5	33	74	26	10	23	8	19	2,3	15	35
K0339.1410	K0339.01410	K0339.11410	A	10	M20x1,5	33	80	28	12	25	10	22	2,8	15	34