

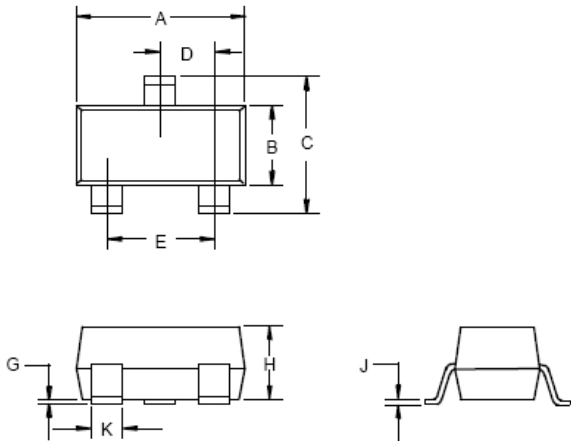


Features

- ◆ High reliability
- ◆ Case Material: Molded Plastic. UL Flammability Classification Rating 94V-0

PACKAGE OUTLINE

SOT-523



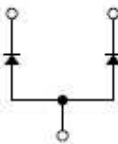
DIMENSIONS					
DIM	INCHES		MM		NOTE
	MIN	MAX	MIN	MAX	
A	.059	.067	1.50	1.70	
B	.030	.033	0.75	0.85	
C	.057	.069	1.45	1.75	
D	.020 Nominal		0.50Nominal		
E	.035	.043	0.90	1.10	
G	.000	.004	.000	.100	
H	.028	.031	.70	0.80	
J	.004	.008	.100	.200	
K	.010	.014	.25	.35	

Absolute Maximum Ratings 【TA=25°C】

Parameter		Symbol	Value	Unit
Peak Reverse Voltage		V_{RM}	80	V
Repetitive peak reverse voltage		V_{RRM}	80	V
Forward Current		I_F	100	mA
Peak Forward Surge Current		I_{FSM}	300	
Maximum Instantaneous Forward	$I_{FM}=1mA\ dc; T_J=25^{\circ}C$	V_F	1.2	Vdc
Reverse Current	$V_R=10Vdc, T_J=25^{\circ}C$	I_R	0.1	uA
Diode Capacitance	$V_R=1\ V, f=1.0MHz$	C_D	3.5	pF
Reverse Recovery Time	$V_R=1\ V, I_F=5mA$	T_{rr}	4.0	nS
Operating and Storage Temperature Range		T_J, T_{STG}	- 55 to + 150	°C

Note: 1. Pulse width 300 msec, Duty cycle 2%

Marking:



DAP222: P