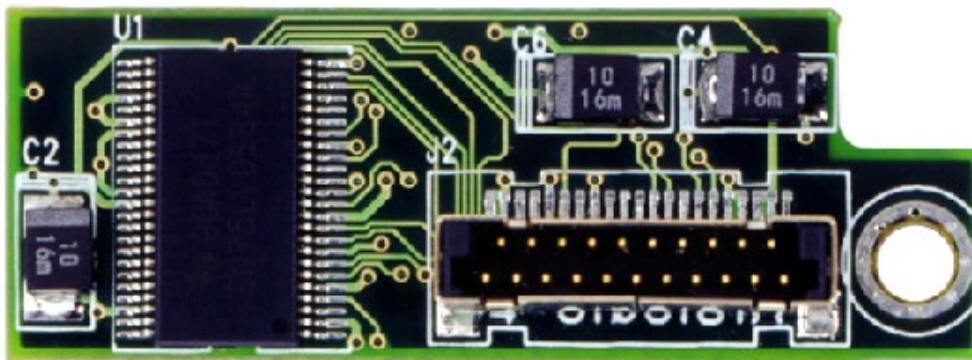


Daughter Board

www.protech.com.tw

Prox-9156T :: LVDS Module



Applicable Models :	PC-620 Series, Pox-1550 Series, Pox-1560 Series, Pox-1580 Series, Pox-1630 Series, Pox-1660 Series, Pox-1670 Series
Component :	THC63LVDM63A or similar
Function :	convert 18 bit TTL data into LVDS data stream
Input Connector :	51-pin connector (Hiose DF9-51S-1V)
Output Connector :	21-pin connector (JAE FI-WE21P-VF)
Dimension :	41mm x 15mm, 1.61" x 0.59"



PROTECH SYSTEMS
It's right choice

Protech Building
No. 24, Lane 365, Yang Goang Street, Nei Hu District
Taipei 114, Taiwan R.O.C.
TEL: +886-2-8751-1111
FAX: +886-2-8751-1199
E-mail: sales@protech.com.tw

Technology :: Creativeness :: Excellence :: Everlasting :: Technology :: Creativeness :: Excellence