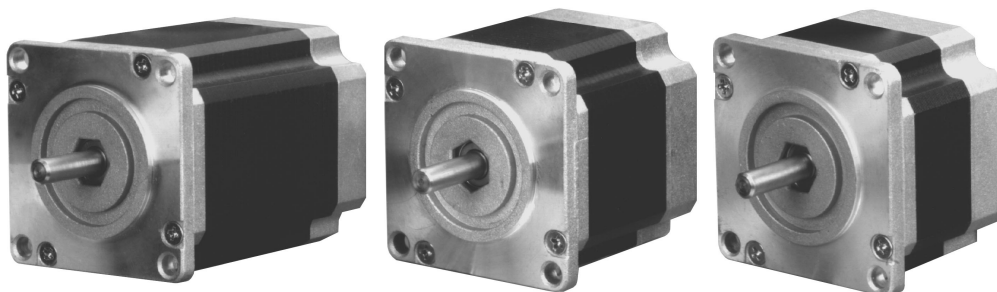


SIZE
23
2.22"
SQ

Rotary Hybrid Stepping Motor 0.9°

High Torque



EADmotors Size 23 hybrid DC 0.9° stepping motors are precision bi-directional devices with position accuracy of $\pm 8\%$ non-cumulative.

Motors are totally enclosed with permanently lubricated ball bearings.

Standard motors have 4 or 6 leads. Motors with 5 or 8 leads can be furnished to meet existing applications.

EADmotors specializes in meeting the individual requirements of each application and offers engineering assistance for your design requirements.

Electrical Ratings

		Unipolar Connection					Bipolar Connection							
Model Number	Number of Leads	Phase Voltage (VDC)	Phase Current (amps)	Phase Resistance (ohms)	Phase Inductance (mH)	Holding Torque (oz-in)	Phase Voltage (VDC)	Phase Current (amps)	Phase Resistance (ohms)	Phase Inductance (mH)	Holding Torque (oz-in)	Rotor Inertia (oz-in-sec ²)	Weight (ounces)	
MH2318-05	6	11.90	0.50	23.50	41.4	72	16.8	0.35	47.00	165.6	90	0.002	17	
MH2318-1	6	6.00	1.00	6.00	10.8	72	8.49	0.71	12.00	43.2	90			
MH2318-2	6	3.00	2.00	1.57	2.6	72	4.24	1.41	3.14	10.4	90			
MH2318-3	6	1.80	3.00	0.61	1.0	72	2.55	2.12	1.22	4.0	90			
MH2318-M100	4						5.80	1.00	5.78	20.3	90			
MH2318-M200	4						3.00	2.00	1.50	5.2	90			
MH2318-M300	4						1.80	3.00	0.60	2.0	90			
MH2322-05	6	15.40	0.50	30.90	67.3	120	21.8	0.35	61.80	269.2	150	0.0035	24	
MH2322-1	6	7.60	1.00	7.59	17.7	120	10.8	0.71	15.18	70.8	150			
MH2322-2	6	3.80	2.00	1.91	4.2	120	5.37	1.41	3.82	16.8	150			
MH2322-3	6	2.30	3.00	0.76	1.6	120	3.25	2.12	1.52	6.4	150			
MH2322-M100	4						7.90	1.00	7.92	35.00	150			
MH2322-M200	4						3.80	2.00	1.90	8.60	150			
MH2322-M300	4						2.40	3.00	0.80	3.50	150			
MH2331-05	6	17.90	0.50	35.70	93.8	190	25.3	0.35	71.40	375.2	240	0.0061	37	
MH2331-1	6	9.20	1.00	9.23	22.5	190	13.0	0.71	18.46	90.0	240			
MH2331-2	6	4.50	2.00	2.24	5.2	190	6.36	1.41	4.48	20.8	240			
MH2331-3	6	2.80	3.00	0.92	2.1	190	3.96	2.12	1.84	8.4	240			
MH2331-M100	4						9.10	1.00	9.13	45.4	240			
MH2331-M200	4						4.70	2.00	2.33	11.5	240			
MH2331-M300	4						3.00	3.00	1.00	4.8	240			

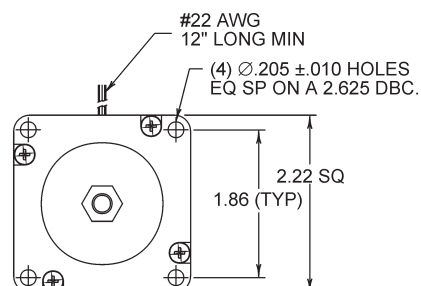
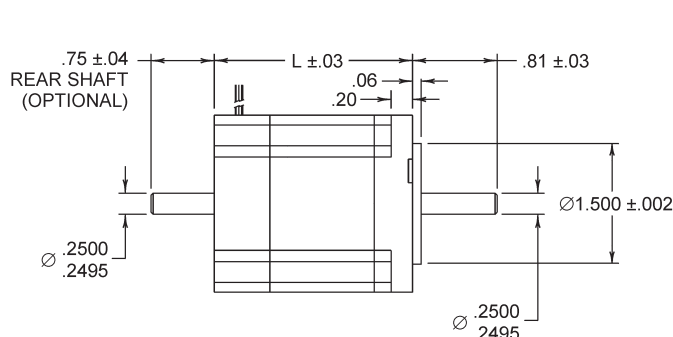
Solutions in motion

EADTMmotors
Eastern Air Devices Inc.

Rotary Hybrid Stepping Motor 0.9°

High Torque

SIZE
23
2.22"
SQ



Size 23

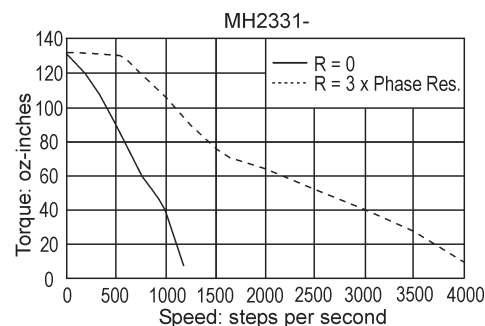
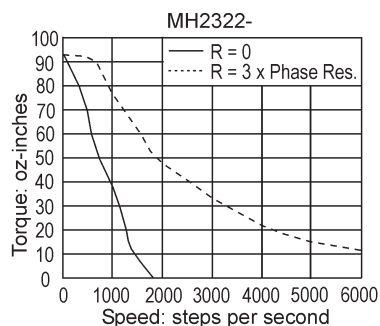
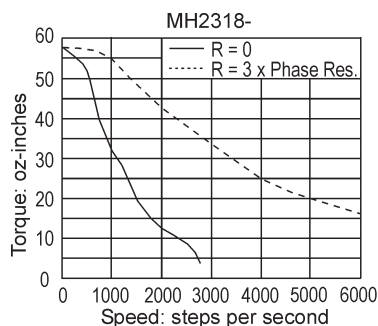
Model Series	Dimension "L" (inches)
MH2318	1.75
MH2322	2.21
MH2331	3.09

See page 38 for Connection Diagrams.

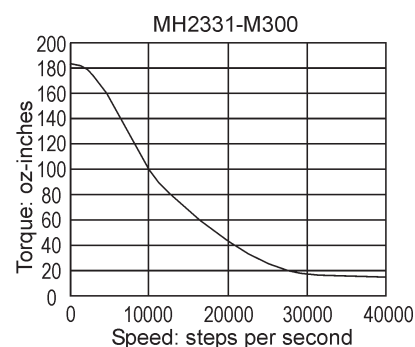
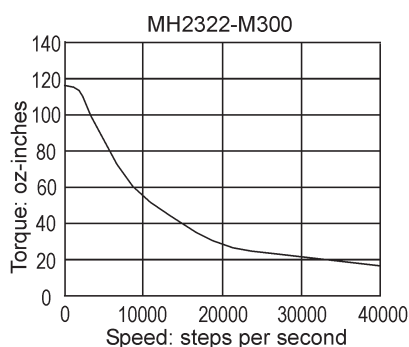
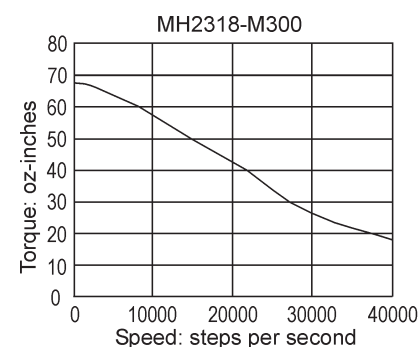
For the rear shaft option, use the suffix "R" (for example, MH2318-2R).

Pullout Torque Speed Curves

Typical Unipolar Performance (6 Lead Motor): Constant Voltage Drive (L/R), 2 Phase On



Typical Bipolar Performance: 80 VDC Power Supply, 3 Amps/Phase



Solutions in motion

EAD™
motors
Eastern Air Devices Inc.