

## PS-DA0253-03-E-B(S) (9 W DUAL OUTPUTS)

(PRELIMINARY INFORMATION)

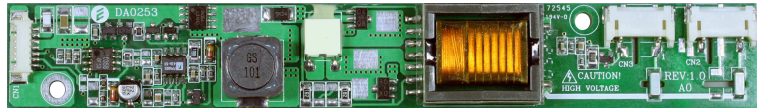
### DESCRIPTION :

This DC to AC Inverter was developed for many other low LCD Backlight power supply as low profile applications.

**Optimized for Sharp: LQ121S1DG61, LQ104V1DG61, LQ104V1LG61, LQ104V1DG64, LQ104V1LG64, LG121S1LG61, LQ121S1LG64, LQ121S1DG64**

### APPLICABLE LCD:

10 to 15 inches dual lamp type  
Lamp Voltage 600 Vrms  
Lamp Current 2 x 6.0 mArms  
Lamp Start Up Voltage 1.700 Vrms (Vin : 12 Vdc)



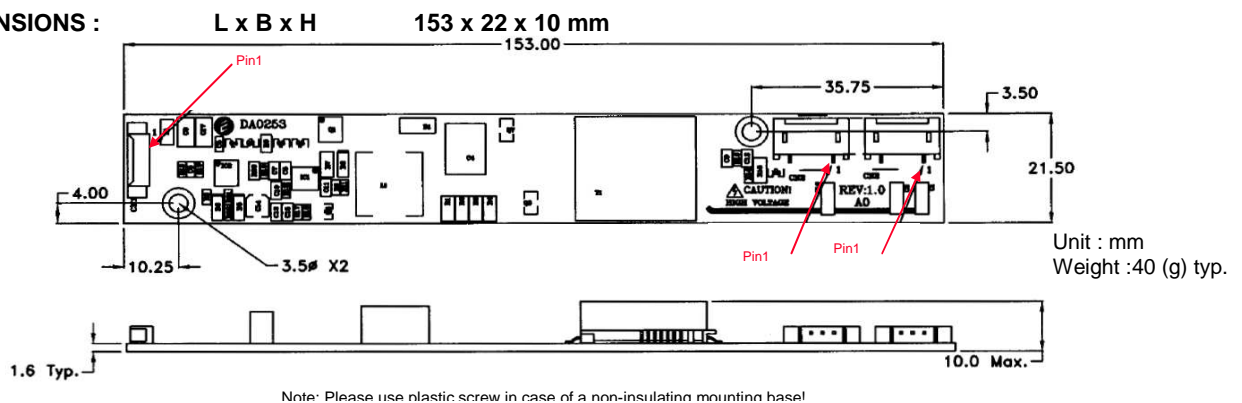
### FEATURES :

Current Feedback Circuit  
High Efficiency  
Low noise with voltage resonant circuit  
Regulated output current  
RoHS compliant (S)

### TEMPERATURE & HUMIDITY :

Operating Temperature Range -30°C ~ +80°C  
Storage Temperature Range -30°C ~ +85°C  
Humidity 95 %RH max

### DIMENSIONS :



### Components

No.	Part Description	Qty.	Material	Note
1	PCB	1	UL94V-0 (FR-4 or CEM-3)	t=1.6mm
2	Connector CN1	1	53261-0790	Molex or equal
3	Connector CN2 ~ CN3	2	SM02(8.0)B-BHS-1-TB	JST or equal

### Input side CN1:

Pin No.	Symbols	Ratings
CN 1-1+2	Vin	10.8 ~ 13.2 Vdc
CN 1-3+4	GND	
CN 1-5	Vrmt	0 ~ 0.4 = OFF / 2.5 ~ Vin = ON
CN 1-6	Vbr	0 ~ 1.8 Vdc
CN 1-7	Rbr	0 ~ 10kOhm

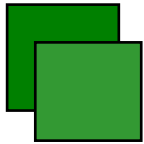
### Output side CN2 ~ CN3

Pin No.	Symbols	Ratings
CN 2-1	Vhigh	600 Vrms (6.0 mArms)
CN 2-2	N.C.	-
CN 2-3	Vlow	(GND)

## Power Systems – The Power Solution

Web: [www.Power-Systems.de](http://www.Power-Systems.de)  
Email: [Info@Power-Systems.de](mailto:Info@Power-Systems.de)

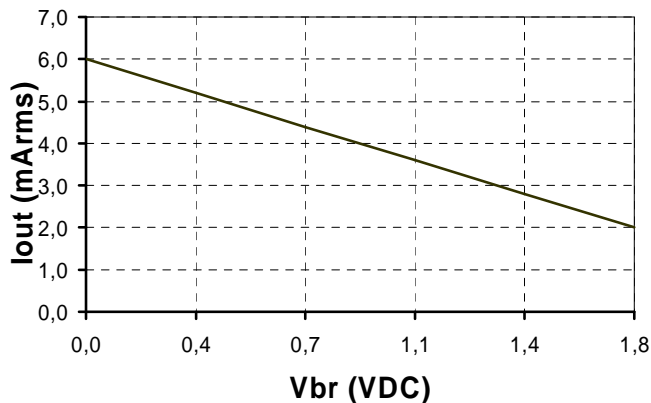
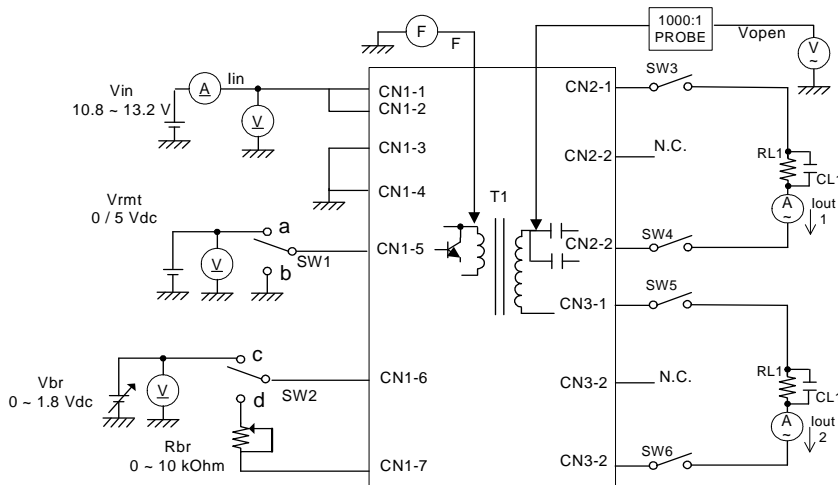
Address: Hauptstr. 48 ; 74360 Ilsfeld-Auenstein / Germany  
Tel. : + 49 / 70 62 / 67 59 - 6  
Fax: + 49 / 70 62 / 67 59 - 800

**ELECTRICAL CHARACTERISTICS :**

Parameters	Symbols	Conditions			Specification			Unit	Note
		Vin (V)	Vbr (V)	Tu (°C)	Min.	Typ.	Max.		
Output Current	Iout	12±1.2	0.0	-30 ~ +80	5.3	6.0	6.7	mArms	Duty 100%
Output Current	Iout	12±0.6	1.8	-30 ~ +80	1.3	2.0	2.7	mArms	
Input Current	Iin	12±1.2	0.0	-30 ~ +80	-	0.75	1.0	A <sub>dc</sub>	
Frequency	F	12±1.2	0.0	-30 ~ +80	32.5	40	47.5	kHz	
Open Circuit Voltage	Vopen	11.4	0.0	-30 ~ +80	1.500	1.700	1.900	V <sub>rms</sub>	
No Load Shutdown	Tsd	12±1.2	0.0	-30 ~ +80	1.0	-	-	sec	without load

Note 1 : Please keep minimum of 2mm clearance (all directions) between inverter high voltage area as marked on mechanical drawing and any conductors.

Note 2: Other dimming voltage (like 0 ~ 3 V<sub>dc</sub>) are available. Please request factory.

**DIMMING CHARACTERISTICS (Reference)****TEST CIRCUIT :**

SW1	Operation of unit
a	Operation
b	Non operation

SW2	Operation of unit
c	Vbr 0 ~ 1.8 Vdc dimming
d	Rbr 0 ~ 10 kOhm dimming

**Power Systems – The Power Solution**

Web: [www.Power-Systems.de](http://www.Power-Systems.de)  
Email: [Info@Power-Systems.de](mailto:Info@Power-Systems.de)

Address: Hauptstr. 48 ; 74360 Ilsfeld-Auenstein / Germany  
Tel. : + 49 / 70 62 / 67 59 - 6  
Fax: + 49 / 70 62 / 67 59 - 800