



Product Specification

G190SVT01.0

AU OPTRONICS CORPORATION

☒ Preliminary Specification☐ Final Specification

Module	19" Color TFT-LCD (Free Shape LCD) with Touch function
Model Name	G190SVT01.0

Customer	Date
<hr/>	<hr/>
Checked & Approved by	Date
<hr/>	<hr/>
Note: This Specification is subject to change without notice.	

Approved by	Date
<hr/> Debbie Chiu	<hr/> 2012/1/12
Prepared by	Date
<hr/> Christine Huang	<hr/> 2012/1/12
General Display Business Division / AU Optronics corporation	



Product Specification

G190SVT01.0

AU OPTRONICS CORPORATION

Contents

1. Operating Precautions	4
2. General Description	5
2.1 Display Characteristics	5
2.2 General Touch Specification	6
2.3 Optical Characteristics	6
3. Functional Block Diagram	10
4. Absolute Maximum Ratings	11
4.1 Absolute Ratings of TFT LCD Module	11
4.2 Absolute Ratings of Environment	11
5. Electrical Characteristics	12
5.1 TFT LCD Module	12
5.2 Backlight Unit	14
5.3 Touch Panel	15
6. Signal Characteristic	19
6.1 Pixel Format Image	19
6.2 Signal Description	20
6.3 Touch Sensor Pin Assignment	21
6.4 The Input Data Format	21
6.5 Interface Timing	22
6.6 Power ON/OFF Sequence	23
7. Connector & Pin Assignment	24
7.1 TFT LCD Module: LVDS Connector	24
7.2 Backlight Unit: LED Connector	25
8. Reliability Test	26
9. Mechanical Characteristics	27
10. Label and Packaging	29
10.1 Definition of Label	29
10.2 Packaging Method	30
10.3 Pallet and Shipment Information	31
11. Safety	32
11.1 Sharp Edge Requirements	32
11.2 Materials	32
11.3 Capacitors	32
11.4 National Test Lab Requirement	32



Product Specification

G190SVT01.0

AU OPTRONICS CORPORATION

Record of Revision

Version and Date	Page	Old description	New Description	Remark
0.1 2011/11/15	All	First Edition for Customer	All	



Product Specification

G190SVT01.0

AU OPTRONICS CORPORATION

1. Operating Precautions

- 1) Since front polarizer is easily damaged, pay attention not to scratch it.
- 2) Be sure to turn off power supply when inserting or disconnecting from input connector.
- 3) Wipe off water drop immediately. Long contact with water may cause discoloration or spots.
- 4) When the panel surface is soiled, wipe it with absorbent cotton or other soft cloth.
- 5) Since the panel is made of glass, it may break or crack if dropped or bumped on hard surface.
- 6) Since CMOS LSI is used in this module, take care of static electricity and insure human earth when handling.
- 7) Do not open or modify the Module Assembly.
- 8) In case if a Module has to be put back into the packing container slot after once it was taken out from the container, take it easily, or the TFT Module may be damaged.
- 9) At the insertion or removal of the Signal Interface Connector, be sure not to rotate nor tilt the Interface Connector of the TFT Module.
- 10) After installation of the TFT Module into an enclosure, do not twist nor bend the TFT Module even momentary. At designing the enclosure, it should be taken into consideration that no bending/twisting forces are applied to the TFT Module from outside. Otherwise the TFT Module may be damaged.
- 11) Small amount of materials having no flammability grade is used in the LCD module. The LCD module should be supplied by power complied with requirements of Limited Power Source (IEC60950 or UL1950), or be applied exemption.
- 12) Severe temperature condition may result in different luminance, response time and LED life time.
- 13) The data on this specification sheet is applicable when LCD module is placed in landscape position.
- 14) Continuous displaying fixed pattern may induce image sticking. It is recommended to use screen saver or shuffle content periodically if fixed pattern is displayed on the screen.



Product Specification

G190SVT01.0

AU OPTRONICS CORPORATION

2. General Description

This specification applies to the 19 inch-wide Color TFT-LCD Module G190SVT01.0.

The display supports the 1680(H) x 342(V) screen format and 16.7M colors. All input signals are 2 Channels LVDS interface compatible.

LED driver board is included. G190SVT01.0 is designed for industrial display applications.

2.1 Display Characteristics

The following items are characteristics summary on the table under 25 ° condition:

Items	Unit	Specifications
Screen Diagonal	[inch]	19
Active Area	[mm]	473.76 (H) x 96.44(V)
Pixels H x V		1680x3(RGB) x 342
Pixel Pitch	[mm]	0.282x 0.282
Pixel Arrangement		R.G.B. Vertical Stripe
Display Mode		P-MVA Mode, Normally Black
Nominal Input Voltage VDD	[Volt]	+5.0 V
Typical Power Consumption	[Watt]	18W (Base Panel)+400mW(Touch Panel) =18.4W
Weight	[Grams]	1100 (Base Panel)+ 380(TP)=1480
Physical Size	[mm]	497.7(W) x 126.8(H) x 21.66(D) (Max.)
Electrical Interface		Dual Channel LVDS
Surface Treatment		Anti-glare, Hardness 7H
Support Color		16.7M colors (6-bits + HiFRC)
Temperature Range Operating Storage (Non-Operating)	[°C] [°C]	0 to +50 -20 to +60
RoHS Compliance		RoHS Compliance



Product Specification

G190SVT01.0

AU OPTRONICS CORPORATION

2.2 General Touch Specification

Items	Unit	Specifications
Detection Method		Projective Capacitive
Touch Glass type		G/G
Sensor Glass Dimension	mm	491.7 x 122.8 x 0.5
Cover lens outline dimension	mm	497.7 x 126.8 x 1.8
Black ink open area	mm	475.56 x 98.24
Touch Active Area	mm	476.76 x 99.44
Capacitive Sense pad size	mm	9.17 (W) x 9.04 (H)
The smallest distance between 2 points	mm	25
Interface		Micro USB
IC Driver		RM31080(AUO-T402-3C)
Channel		52X11
Light Transmission	%	85%(min), 88%(Typ.)
Haze	%	5~10
Touch Panel Strength	mpa	400(TBD)
Operation System		Windows 7, Windows XP, Win CE, Anroid, Linux (see note 1)
Touch Points	Points	10

<Note 1>

G190SVT01.0 is compatible with Windows 7 with no additional software.

Remember not all applications are multi-touch ready. Multi-touch behavior is a function of Your application. Check your application vendor to determine if your software has multi-touch capability(you may refer to the User guide for software development)

2.3 Optical Characteristics

The optical characteristics are measured under stable conditions at 25℃ (Room Temperature):

Item	Unit	Conditions	Min.	Typ.	Max.	Note
White Luminance	[cd/m ²]	I _F = 80mA	210	260	-	1
Uniformity	%	9 Points	75	80	-	1, 2, 3
Contrast Ratio			1600	2000	-	4



Product Specification

G190SVT01.0

AU OPTRONICS CORPORATION

Cross talk	%		-	-	1.5	5
Response Time	[msec]	Rising	-	15	-	6
		Falling	-	5	-	
		Rising + Falling	-	20	-	
		Gray to Gray	-	8	-	
Viewing Angle	[degree] [degree]	Horizontal (Right)	75	89	-	7
		CR = 10 (Left)	75	89	-	
	[degree] [degree]	Vertical (Upper)	75	89	-	
		CR = 10 (Lower)	75	89	-	
Color / Chromaticity Coordinates (CIE 1931)		Red x	TBD	TBD	TBD	
		Red y	TBD	TBD	TBD	
		Green x	TBD	TBD	TBD	
		Green y	TBD	TBD	TBD	
		Blue x	TBD	TBD	TBD	
		Blue y	TBD	TBD	TBD	
		White x	0.252	0.302	0.352	
		White y	0.263	0.313	0.363	
Color Gamut	%		-	68	-	

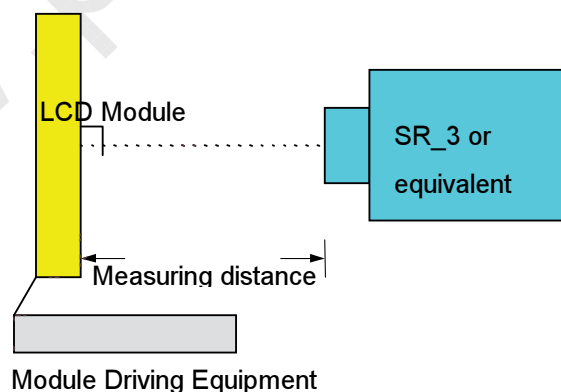
Note 1: Measurement method

Equipment Pattern Generator, Power Supply, Digital Voltmeter, Luminance meter (SR_3 or equivalent)

Aperture 1□with 50cm viewing distance

Test Point Center

Environment < 1 lux



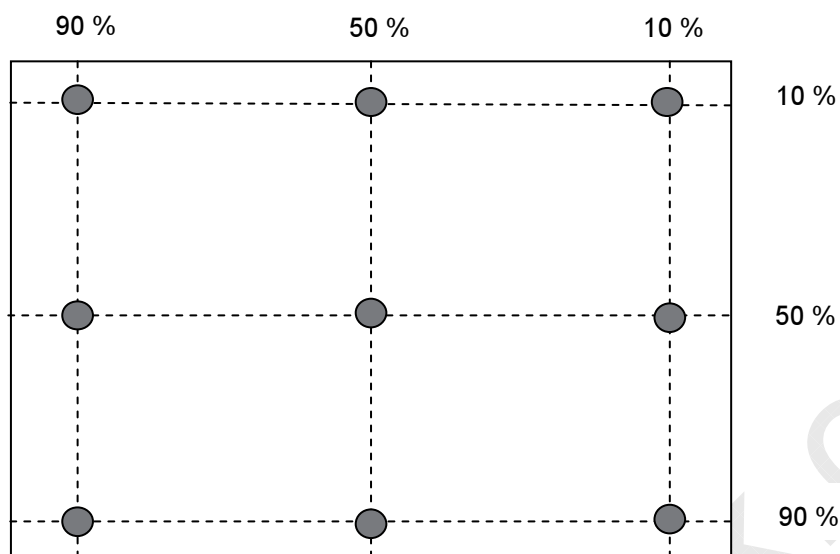


Product Specification

AU OPTRONICS CORPORATION

G190SVT01.0

Note 2: Definition of 9 points position (Display active area)



Note 3: The luminance uniformity of 9 points is defined by dividing the minimum luminance values by the maximum test point luminance

$$\delta_{W9} = \frac{\text{Minimum Brightness of nine points}}{\text{Maximum Brightness of nine points}}$$

Note 4: Definition of contrast ratio (CR):

$$\text{Contrast ratio (CR)} = \frac{\text{Brightness on the "White" state}}{\text{Brightness on the "Black" state}}$$

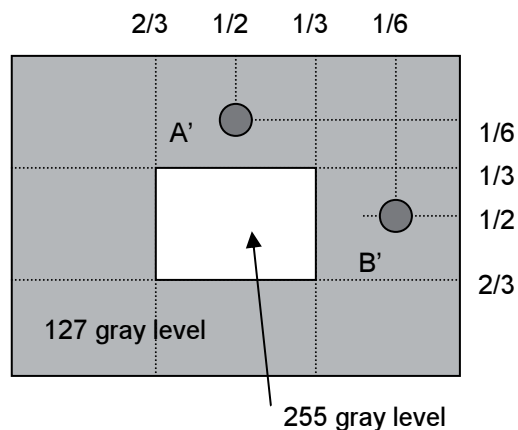
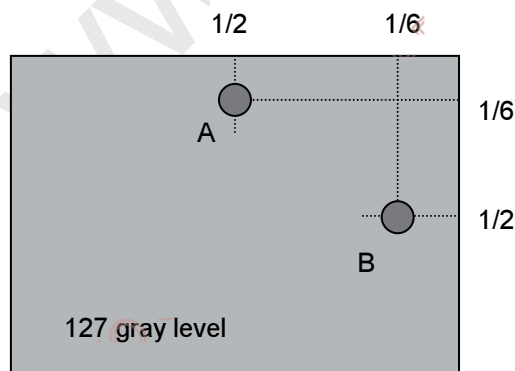
Note 5: Definition of cross talk (CT)

$$CT = |YB - YA| / YA \times 100 (\%)$$

Where

YA = Luminance of measured location without gray level 255 pattern (cd/m2)

YB = Luminance of measured location with gray level 255 pattern (cd/m2)





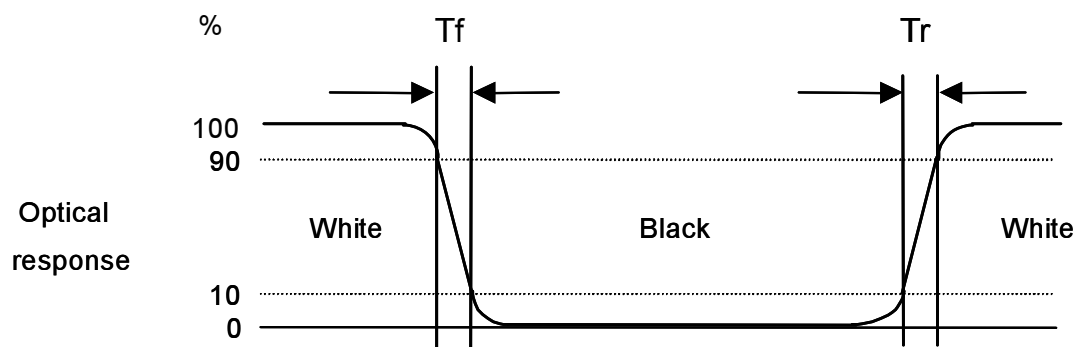
Product Specification

G190SVT01.0

AU OPTRONICS CORPORATION

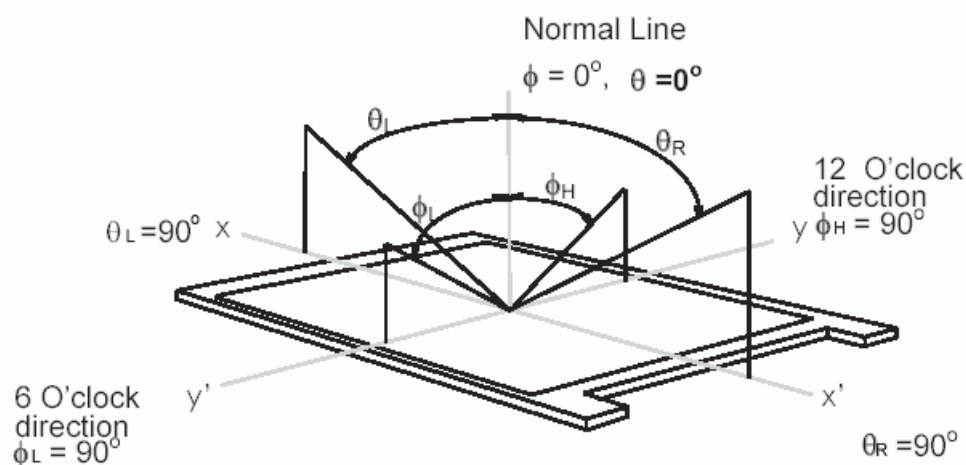
Note 6: Definition of response time:

The output signals of photo detector are measured when the input signals are changed from "White" to "Black" (falling time) and from "Black" to "White" (rising time), respectively. The response time interval is between 10% and 90% of amplitudes. Please refer to the figure as below.



Note 7: Definition of viewing angle

Viewing angle is the measurement of contrast ratio ≥ 10 , at the screen center, over a 180° horizontal and 180° vertical range (off-normal viewing angles). The 180° viewing angle range is broken down as below: 90° (θ) horizontal left and right, and 90° (ϕ) vertical high (up) and low (down). The measurement direction is typically perpendicular to the display surface with the screen rotated to its center to develop the desired measurement viewing angle.





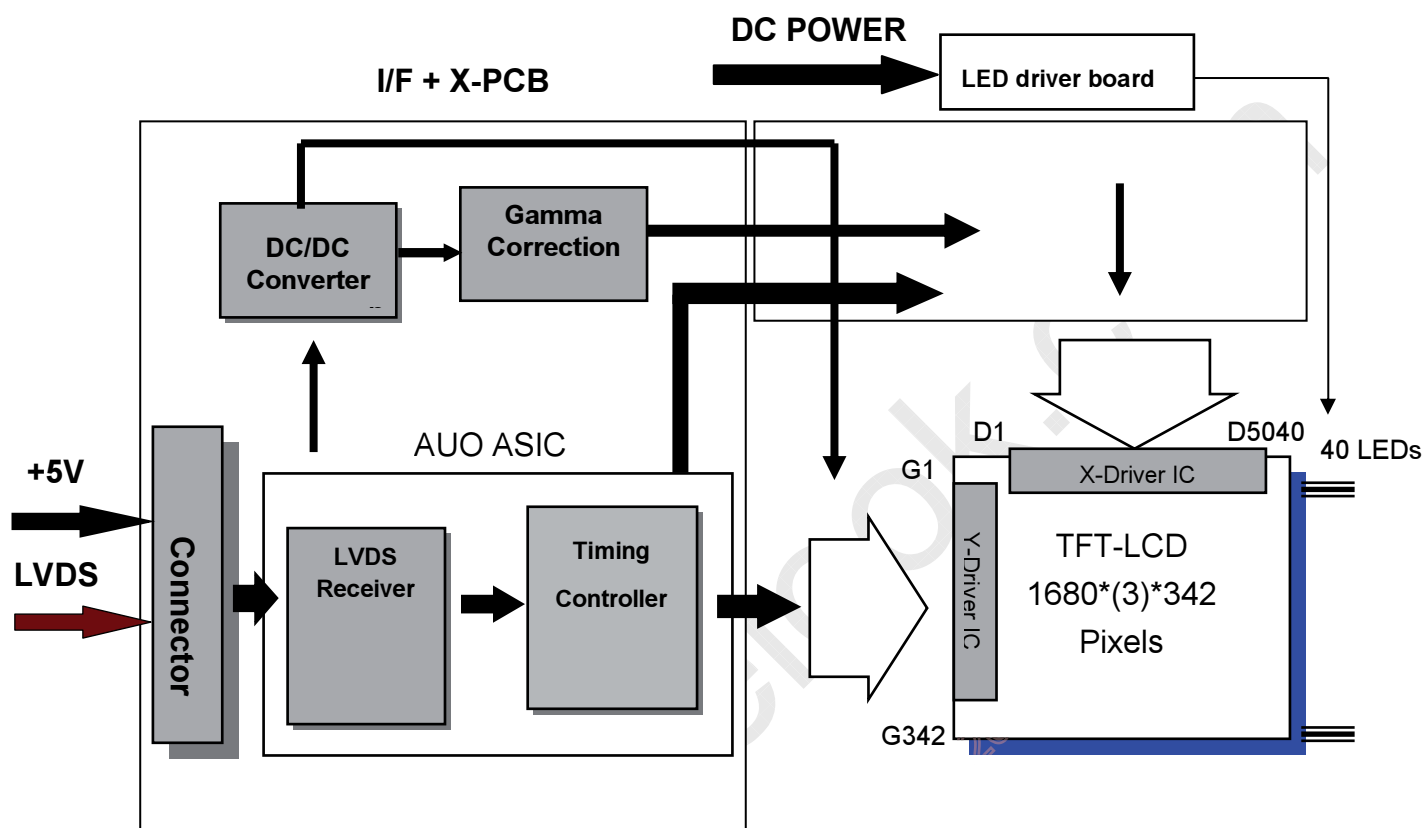
Product Specification

G190SVT01.0

AU OPTRONICS CORPORATION

3. Functional Block Diagram

The following diagram shows the functional block of the 19 inches wide Color TFT-LCD Module:



LVDS Connector: JAE (FI-XB30SRL-HF11) or equivalent.

LED Connector: SIN SHENG (MS24049HJ) or equivalent.



Product Specification

G190SVT01.0

AU OPTRONICS CORPORATION

4. Absolute Maximum Ratings

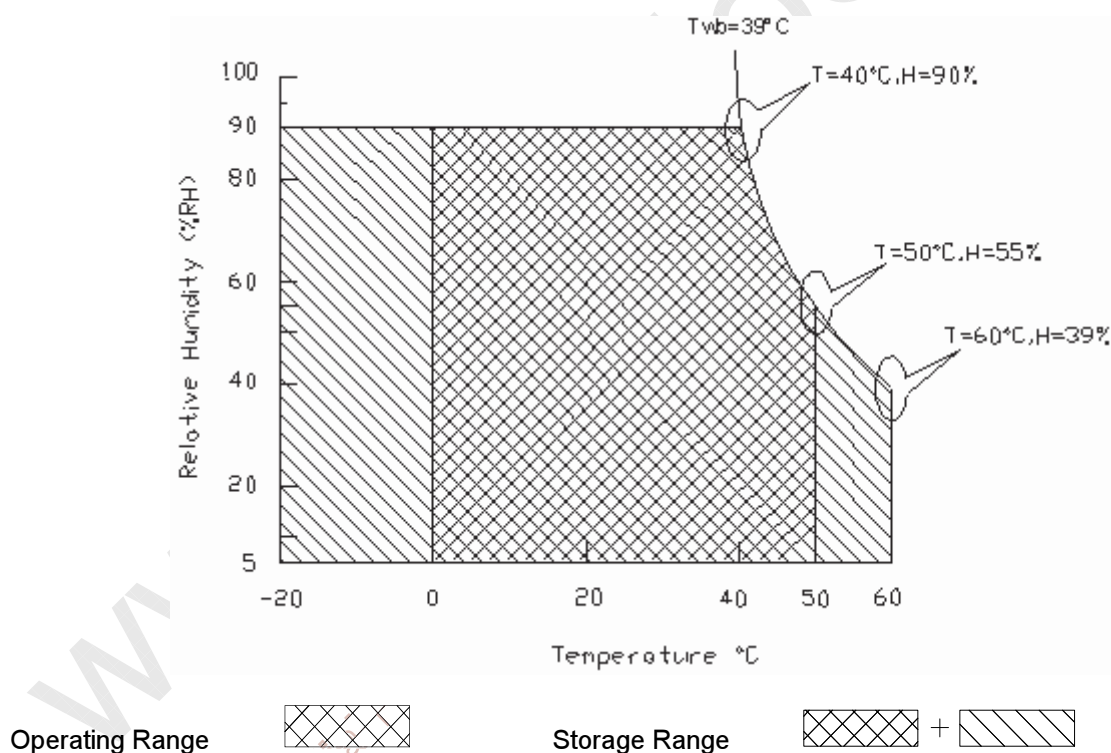
4.1 Absolute Ratings of TFT LCD Module

Item	Symbol	Min	Max	Unit
Logic/LCD Drive Voltage	VDD	-0.3	+5.5	[Volt]

4.2 Absolute Ratings of Environment

Item	Symbol	Min	Max	Unit
Operating Temperature	TOP	0	+50	[°C]
Operation Humidity	HOP	5	90	[%RH]
Storage Temperature	TST	-20	+60	[°C]
Storage Humidity	HST	5	90	[%RH]

Note: Maximum Wet-Bulb should be 39°C and no condensation.





Product Specification

G190SVT01.0

AU OPTRONICS CORPORATION

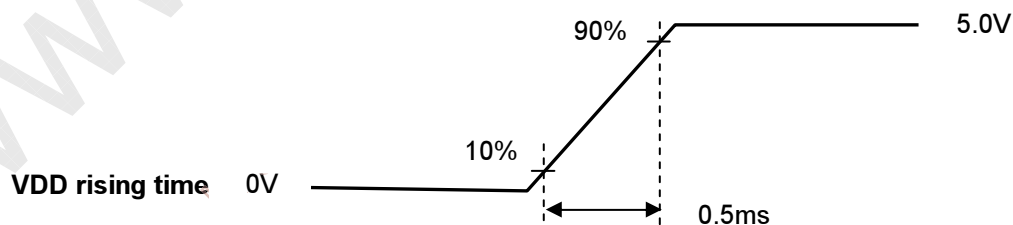
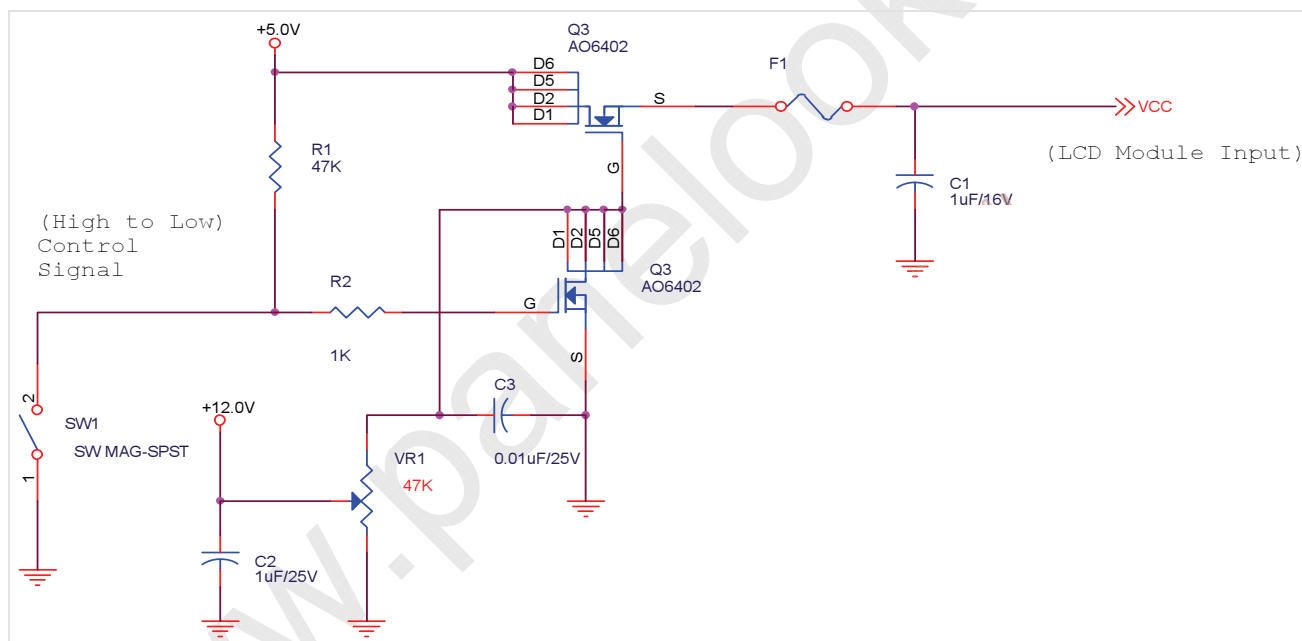
5. Electrical Characteristics

5.1 TFT LCD Module

5.1.1 Power Specification

Symbol	Parameter	Min	Typ	Max	Units	Remark
VDD	Logic/LCD Drive Voltage	4.5	5.0	5.5	[Volt]	±10%
IDD	VDD Current	-	1200	-	[mA]	VDD= 5.0V, All White Pattern At 60Hz
Irush	LCD Inrush Current	-	-	3.5	[A]	Note 1
PDD	VDD Power	-	6	-	[Watt]	VDD= 5.0V, All White Pattern At 60Hz

Note 1: Measurement condition:





Product Specification

G190SVT01.0

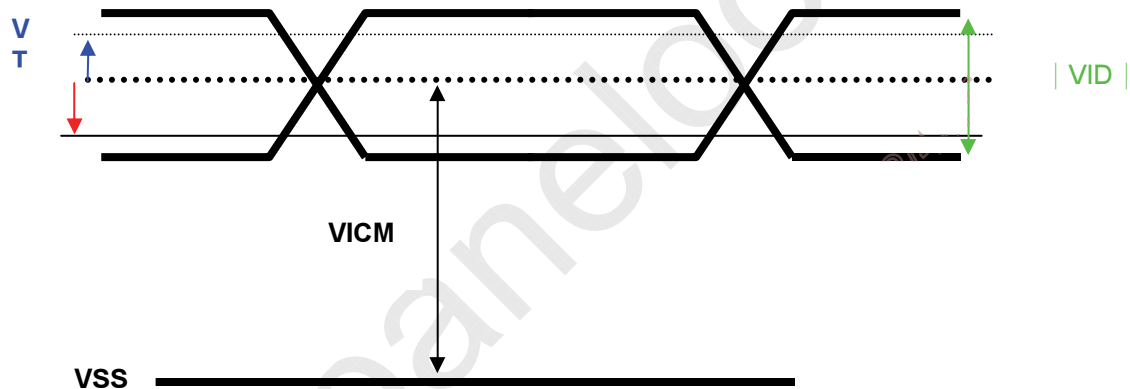
AU OPTRONICS CORPORATION

5.1.2 Signal Electrical Characteristics

Input signals shall be low or Hi-Z state when VDD is off.

Symbol	Item	Min.	Typ.	Max.	Unit	Remark
VTH	Differential Input High Threshold	-	-	100	[mV]	VCM=1.2V
VTL	Differential Input Low Threshold	-100	-	-	[mV]	VCM=1.2V
VID	Input Differential Voltage	100	400	600	[mV]	
VICM	Differential Input Common Mode Voltage	0.3	-	1.25	[V]	VTH/VTL=±100mV

Note: LVDS Signal Waveform.





Product Specification

G190SVT01.0

AU OPTRONICS CORPORATION

5.2 Backlight Unit

5.2.1 LED Light Bar

Following characteristics are measured under stable condition at 25℃ (Room Temperature).

Symbol	Parameter	Min	Typ	Max	Units	Remark
Vcc	Input Voltage	-	12	-	Volt	
Ivcc	Input Current	-	1	-	A	100% Dimming
PLED	Power Consumption	-	12	-	Watt	100% Dimming, Note3
FPWM	PWM Dimming Frequency	200	-	20K	Hz	
	Swing Voltage		3.3		Volt	
	Dimming Duty Cycle	10	-	100	%	
Vanalog	Analog Dimming Voltage	-	N/A	-		No Analog Dimming
IF	LED Forward Current	-	80	-	mA	Ta = 25oC
Operating Life		50000	-	-	Hrs	Ta = 25oC

Note 1: Ta means ambient temperature of TFT-LCD module,

Note 2: If module is driven by high current or at high ambient temperature & humidity condition. The operating life will be reduced.

Note 3: LED light bar structure: (5 strings x 8pcs / string =40pcs of LED)

Note 4: Operating life means brightness goes down to 50% initial brightness. Typical operating life time is estimated data.



Product Specification

G190SVT01.0

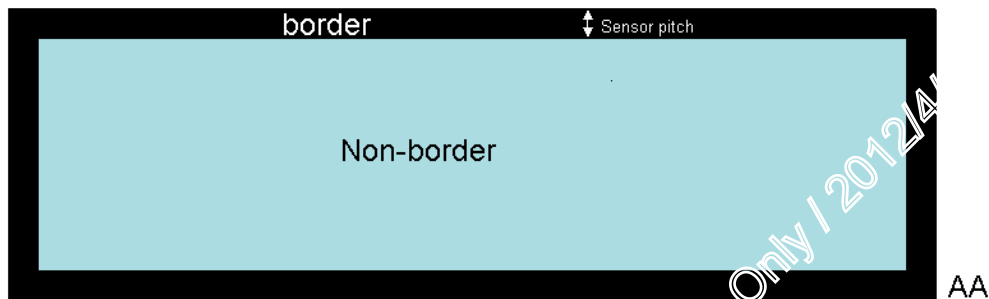
AU OPTRONICS CORPORATION

5.3 Touch Panel

5.3.1 Touch Function Specification

Item	Sym	Condition	Min	Typ.	Max	Unit
Response time		Touch to Report Point	-	-	30	ms
Report rate		Single touch	-	100	-	Hz
Report rate		10-finger	-	70		Hz
Accuracy		Non-Border			2.5	mm
Accuracy		Border			5	mm
Linearity		Non-Border			+/- 2.5	mm
Linearity		Border			+/- 5	mm
Minimum distance between 2 finger		Multi-touch drawing minimum distance		25		mm
Touch diameter		Single touch	8	-	12	mm

Note: Please refer 5.3.8 figure for Accuracy and linearity



5.3.2 Absolute Maximum Ratings

Item	Symbol	Min	Max	Unit	Conditions
Touch Sensor Power Voltage	Vin	2.8	3.6	[Volt]	

5.3.3 Absolute Ratings of Environment

Item	Symbol	Min	Max	Unit	Conditions
Operating	TOP	0	55	[oC]	Note 4
Operation	HOP	10	80	[%RH]	Note 4
Storage	TST	-20	+60	[oC]	Note 4
Storage Humidity	HST	10	90	[%RH]	Note 4

Note 4: For quality performance, please refer to AUO IIS (Incoming Inspection Standard).



Product Specification

G190SVT01.0

AU OPTRONICS CORPORATION

5.3.4 Electrical Characteristics

Items	Symbol	Specifications			Unit	Notes
		Min.	Typ.	Max.		
Touch Panel Power Supply	VDD	4.5	---	5.5	V	
Touch Panel Power Supply Current(Active)	IVDD	---	---	50	mA	

5.3.5 Interface Pin Function

PIN#	Signal Name	Description
1	VBUS	Red:5V power
2	D-	White:Negative differential data.
3	D+	Green:Positive differential data.
4	ID	<Ra_PLUG_ID:Ground
5	GND	Black:Ground
Shell	Shield	Drain Wire

Reference by USB.org specification

5.3.6 Panel Connector Description

Standard Micro-B USB Connector

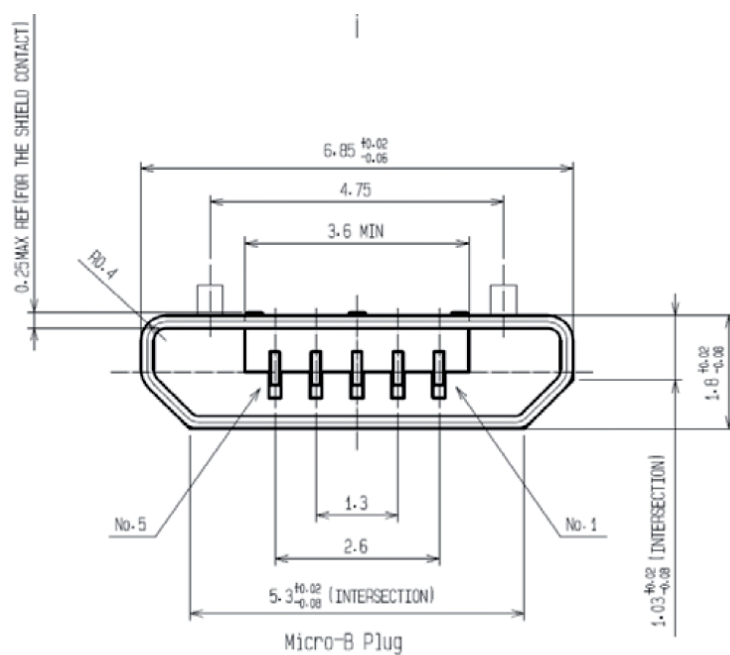
Connector Name / Designation	For Signal Connector
Manufacturer	HRS
Type / Part Number	VX62-B-5PA
Mating Housing/Part Number	VX62-B-5PA



Product Specification

AU OPTRONICS CORPORATION

G190SVT01.0

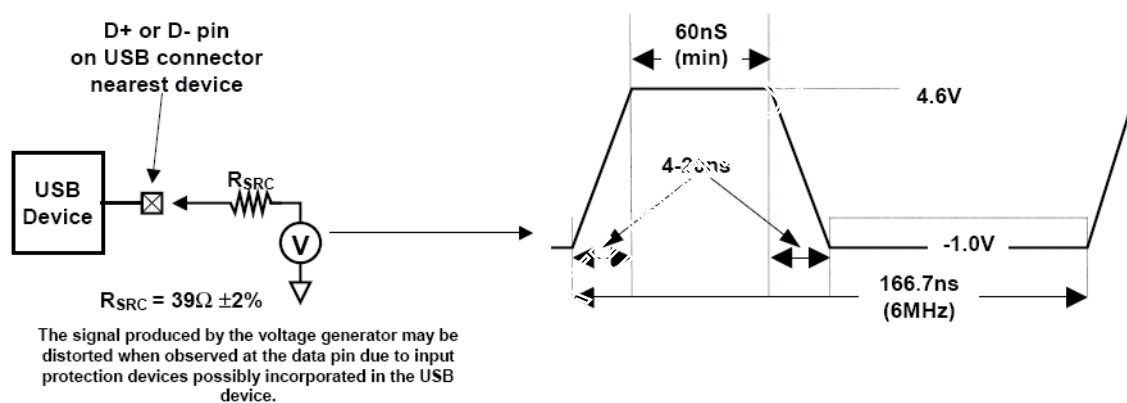


Reference by USB.org specification

5.3.7 Touch Panel Timing Spec

Standard USB HID Interface (touch digitizer)

AC Stress Evaluation Setup



Reference by USB.org specification

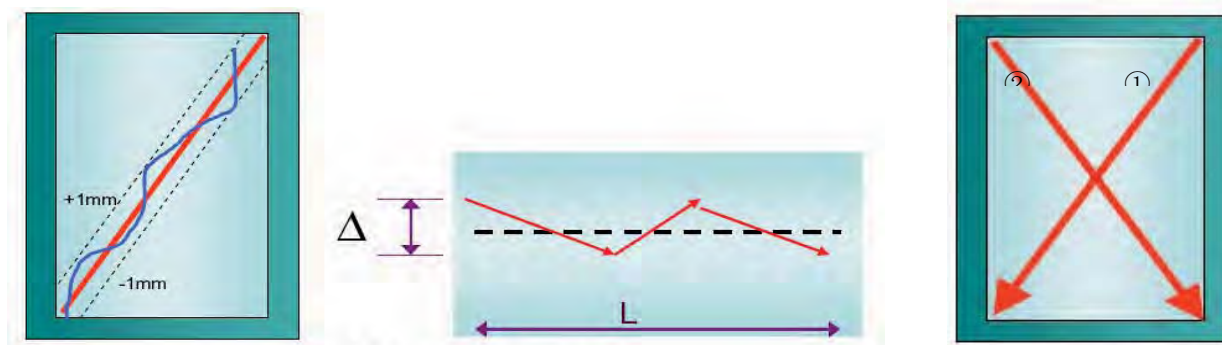


Product Specification

G190SVT01.0

AU OPTRONICS CORPORATION

5.3.8 Touch Accuracy and Linearity



The report data must locate within $\pm 2.5\text{mm}$ and deviation $\Delta / L \leq 1\%$



Product Specification

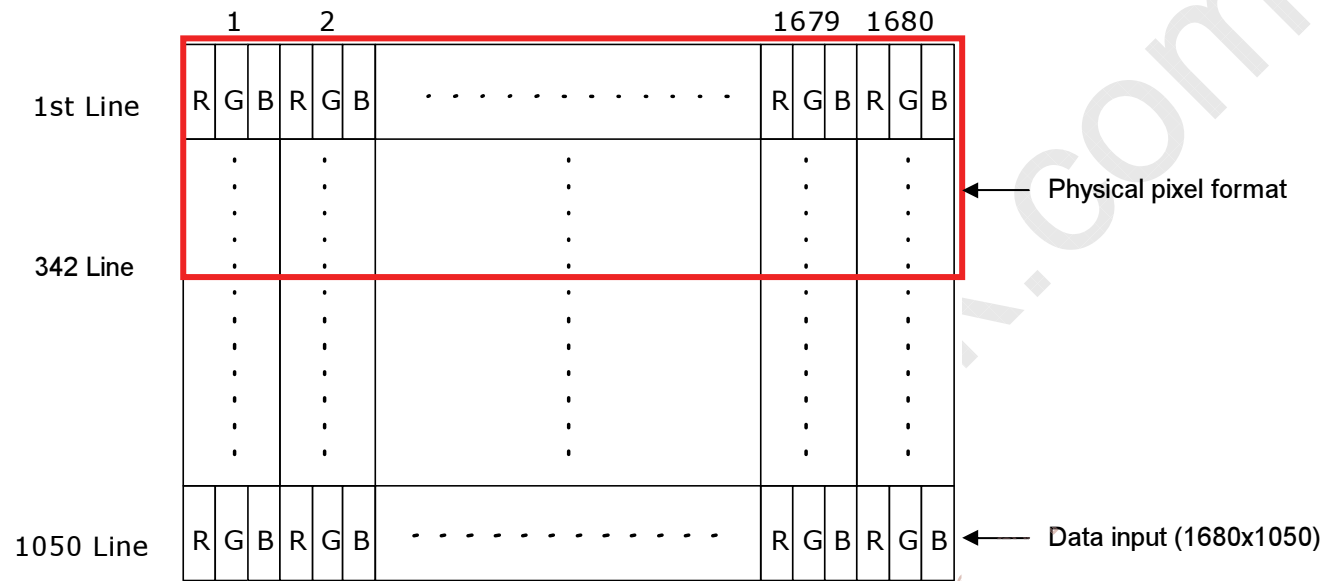
G190SVT01.0

AU OPTRONICS CORPORATION

6. Signal Characteristic

6.1 Pixel Format Image

Following figure shows the relationship of the input signals and LCD pixel format.. Although this panel resolution is 1680x342, please input 1680x1050 format signal to it. And the data after line 343 (inlculde 343) ALL should be set to "black" command.





Product Specification

G190SVT01.0

AU OPTRONICS CORPORATION

6.2 Signal Description

The module using a pair of LVDS receiver SN75LVDS82(Texas Instruments) or compatible. LVDS is a differential signal technology for LCD interface and high speed data transfer device. Transmitter shall be SN75LVDS83(negative edge sampling) or compatible. The first LVDS port(RxOxxx) transmits odd pixels while the second LVDS port(RxExxx) transmits even pixels.

PIN #	SIGNAL NAME	DESCRIPTION
1	RXinO0-	Negative LVDS differential data input (Odd data)
2	RXinO0+	Positive LVDS differential data input (Odd data)
3	RXinO1-	Negative LVDS differential data input (Odd data)
4	RXinO1+	Positive LVDS differential data input (Odd data)
5	RXinO2-	Negative LVDS differential data input (Odd data, H-Sync, V-Sync, DSPTMG)
6	RXinO2+	Positive LVDS differential data input (Odd data, H-Sync, V-Sync, DSPTMG)
7	GND	Power Ground
8	RxOCLKIN-	Negative LVDS differential clock input (Odd clock)
9	RxOCLKIN+	Positive LVDS differential clock input (Odd clock)
10	RXinO3-	Negative LVDS differential data input (Odd data)
11	RXinO3+	Positive LVDS differential data input (Odd data)
12	RXinE0-	Negative LVDS differential data input (Even data)
13	RXinE0+	Positive LVDS differential data input (Even data)
14	GND	Power Ground
15	RXinE1-	Negative LVDS differential data input (Even data)
16	RXinE1+	Positive LVDS differential data input (Even data)
17	GND	Power Ground
18	RXinE2-	Negative LVDS differential data input (Even data)
19	RXinE2+	Positive LVDS differential data input (Even data)
20	RxECLKIN-	Negative LVDS differential clock input (Even clock)
21	RxECLKIN+	Positive LVDS differential clock input (Even clock)
22	RXinE3-	Negative LVDS differential data input (Even data)
23	RXinE3+	Positive LVDS differential data input (Even data)
24	GND	Power Ground
25	NC	No contact (For AUO test only)
26	NC	No contact (For AUO test only)
27	NC	No contact (For AUO test only)
28	VCC	+5.0V Power Supply
29	VCC	+5.0V Power Supply
30	VCC	+5.0V Power Supply



Product Specification

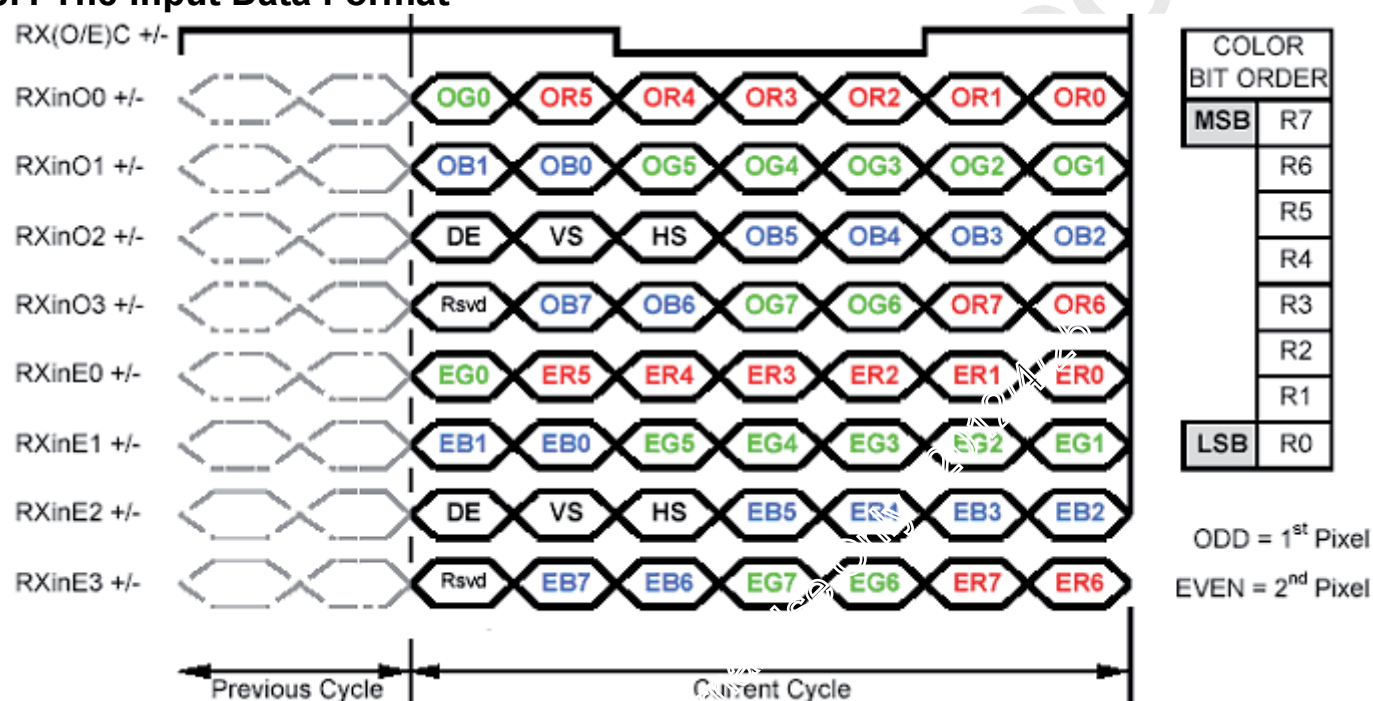
G190SVT01.0

AU OPTRONICS CORPORATION

6.3 Touch Sensor Pin Assignment

PIN#	Signal Name	Description
1	VBUS	5V power
2	DM	Negative differential data.
3	DP	Positive differential data.
4	GND	Ground
5	GND	Ground

6.4 The Input Data Format



Note1: 8-bits signal input.

Note2: L:NS alike H:Thine alike



Product Specification

G190SVT01.0

AU OPTRONICS CORPORATION

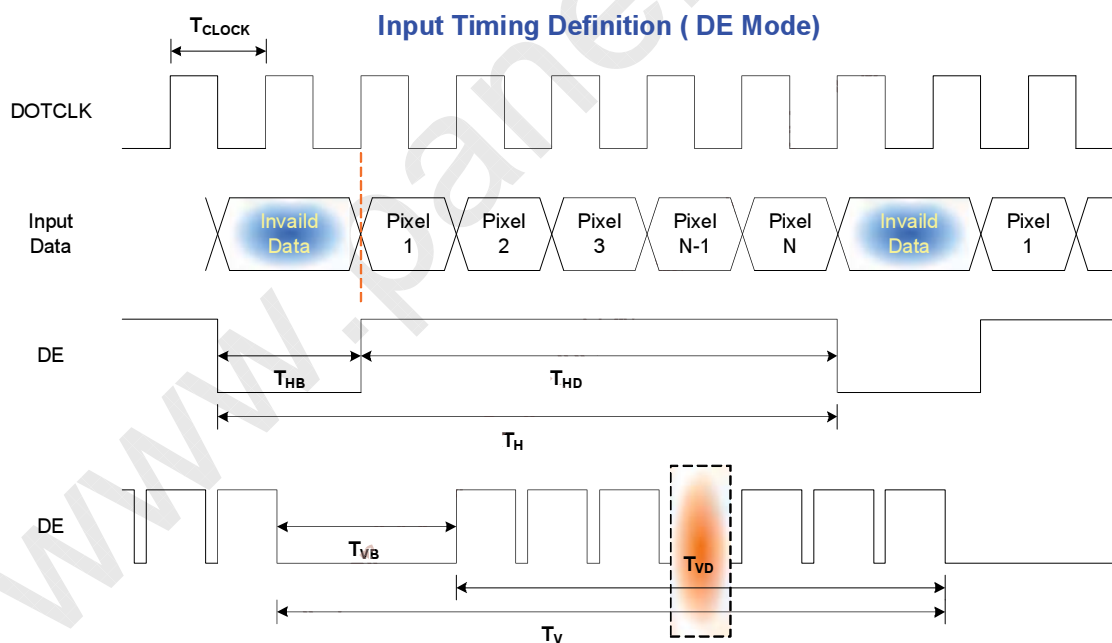
6.5 Interface Timing

6.5.1 Timing Characteristics

Signal	Item	Symbol	Min	Typ	Max	Unit
Clock	Frequency	$1/T_{\text{Clock}}$	60	72.1	85	MHz
Frame Rate	Frequency	$1/T_v$	50	60	75	Hz
Vertical Section	Period	T_v	1058	1066	2048	T_line
	Active	T_{vD}	1050	1050	1050	
	Blanking	T_{vB}	8	16	998	
Horizontal Section	Period	T_H	880	1128	2048	T_clock
	Active	T_{HD}	840	840	840	
	Blanking	T_{HB}	40	288	1208	

Note: DE mode only.

6.5.2 Input Timing Diagram





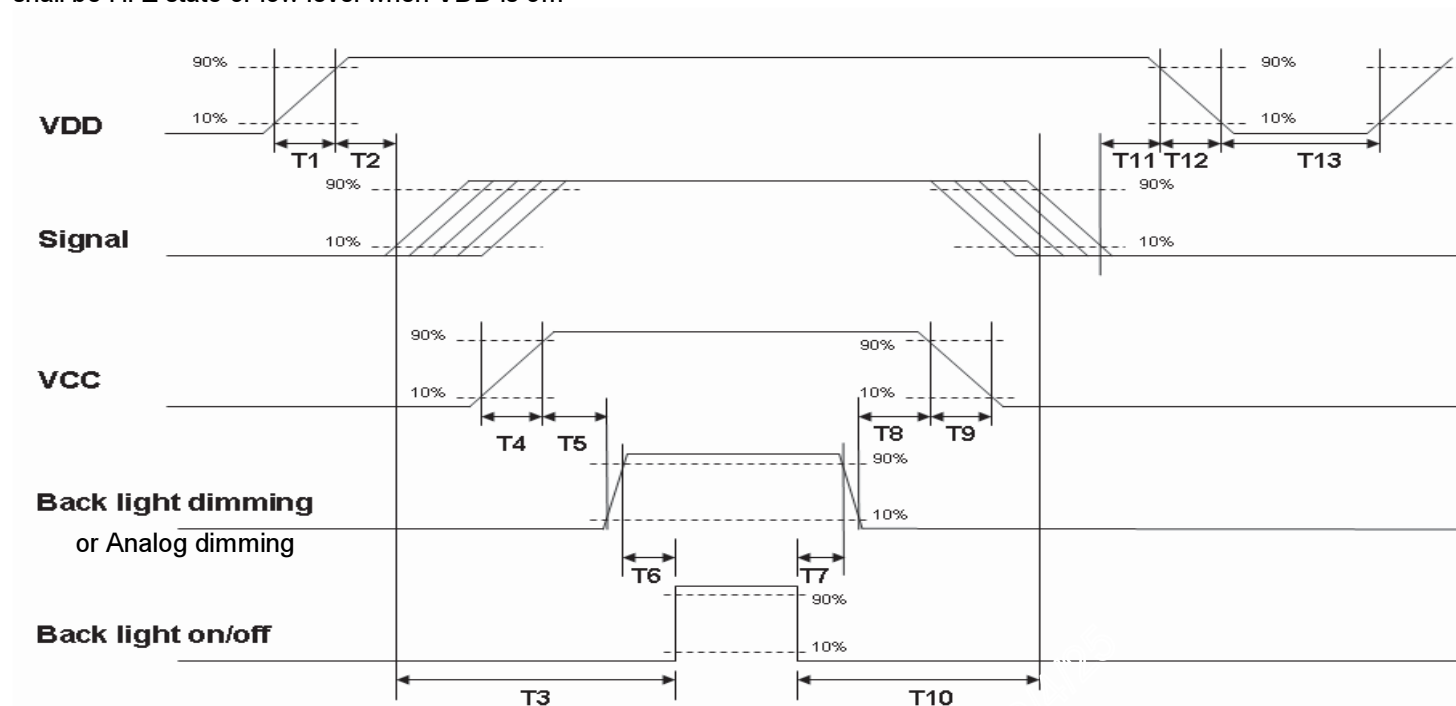
Product Specification

AU OPTRONICS CORPORATION

G190SVT01.0

6.6 Power ON/OFF Sequence

VDD power and B/L on/off sequence is as below. Interface signals are also shown in the chart. Signals from any system shall be Hi-Z state or low level when VDD is off.



Power ON/OFF sequence timing

Parameter	Value			Units
	Min.	Typ.	Max.	
T1	0.5	--	10	[ms]
T2	30	40	50	[ms]
T3	200	--	--	[ms]
T4	0.5	--	10	[ms]
T5	10	--	--	[ms]
T6	10	--	--	[ms]
T7	0	--	--	[ms]
T8	10	--	--	[ms]
T9	--	--	10	[ms]
T10	110	--	--	[ms]
T11	0	16	50	[ms]
T12	--	--	10	[ms]
T13	1000	--	--	[ms]

The above on/off sequence should be applied to avoid abnormal function in the display. Please make sure to turn off the power when you plug the cable into the input connector or pull the cable out of the connector.



Product Specification

G190SVT01.0

AU OPTRONICS CORPORATION

7. Connector & Pin Assignment

Physical interface is described as for the connector on module. These connectors are capable of accommodating the following signals and will be following components.

7.1 TFT LCD Module: LVDS Connector

Connector Name / Designation	Interface Connector / Interface card
Manufacturer	LVDS: JAE or compatible
Type Part Number	LVDS : JAE (FI-XB30SRL-HF11) or equivalent.
Mating Housing Part Number	FI-X30H (JAE) or compatible

Pin#	Signal Name	Pin#	Signal Name
1	RxOIN0-	2	RxOIN0+
3	RxOIN1-	4	RxOIN1+
5	RxOIN2-	6	RxOIN2+
7	GND	8	RxOCLKIN-
9	RxOCLKIN+	10	RxOIN3-
11	RxOIN3+	12	RxEIN0-
13	RxEIN0+	14	GND
15	RxEIN1-	16	RxEIN1+
17	GND	18	RxEIN2-
19	RxEIN2+	20	RxECLKIN-
21	RxECLKIN+	22	RxEIN3-
23	RxEIN3+	24	GND
25	NC	26	NC
27	NC	28	VCC
29	VCC	30	VCC



Product Specification

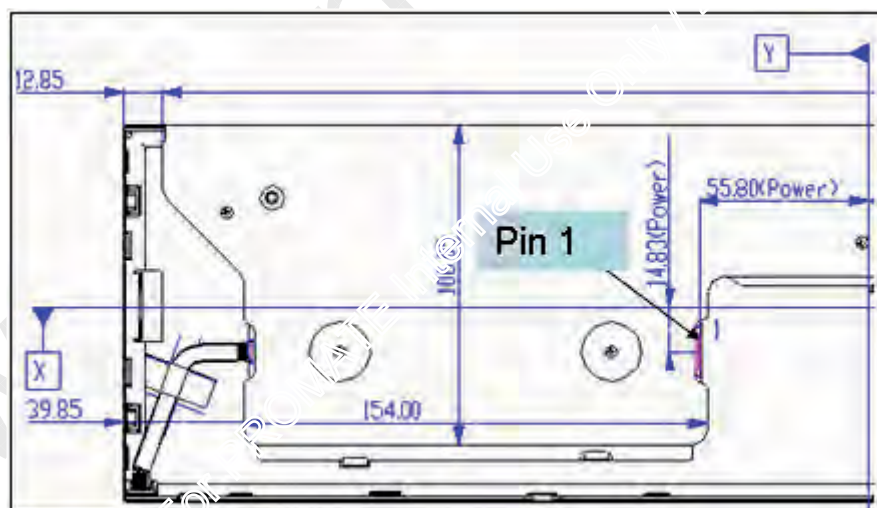
G190SVT01.0

AU OPTRONICS CORPORATION

7.2 Backlight Unit: LED Connector

Connector Name / Designation	LED Connector
Manufacturer	SIN SHENG or compatible
Connector Model Number	MS24049HJ
Mating Model Number	2404PS-2 or compatible

PIN #	SIGNAL NAME	DESCRIPTION
1	V12	Input voltage, 12V
2	V12	Input voltage, 12V
3	V12	Input voltage, 12V
4	-	NC
5	GND	Ground
6	GND	Ground
7	GND	Ground
8	BL_EN	Back light enable, 5V
9	BL_DIM_P	Back light dimming, 3.3V





Product Specification

G190SVT01.0

AU OPTRONICS CORPORATION

8. Reliability Test

Environment test conditions are listed as following table.

Items	Required Condition	Note
Temperature Humidity Bias	Ta= 50□, 80%RH, 300hours	
High Temperature Operation	Ta= 50□, 300hours	
Low Temperature Operation	Ta= 0□, 300hours	
High Temperature Storage	Ta= 60□, 300hours	
Low Temperature Storage	Ta= -20□, 300hours	
Thermal Shock Test	-20□/30min, 60□/30min, 100 cycles	
Shock Test (Non-Operating)	50G,20ms,Half-sine wave,(±X, ±Y, ±Z)	
Vibration Test (Non-Operating)	1.5G, (10~200Hz, P-P) 30 mins/axis (X, Y, Z)	
On/off test	On/10 sec, Off/10 sec, 30,000 cycles	
ESD	Contact Discharge: ± 8KV, 150pF(330Ω) 1sec, 8 points, 25 times/ point.	Note 1
	Air Discharge: ± 15KV, 150pF(330Ω) 1sec 8 points, 25 times/ point.	

Note1: According to EN61000-4-2, ESD class B: Some performance degradation allowed. No data lost

- Self-recoverable. No hardware failures.

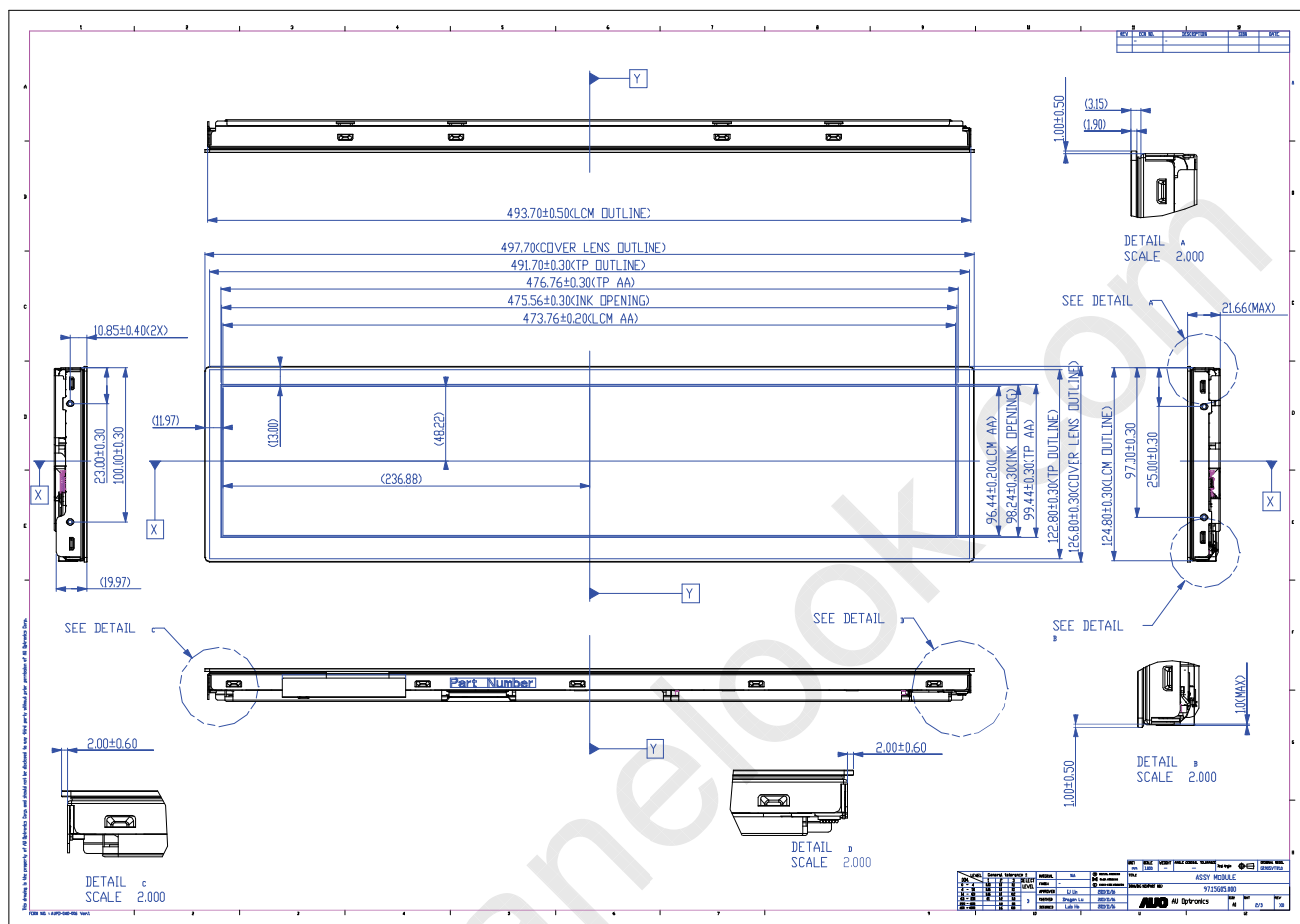


Product Specification

AU OPTRONICS CORPORATION

G190SVT01.0

9. Mechanical Characteristics

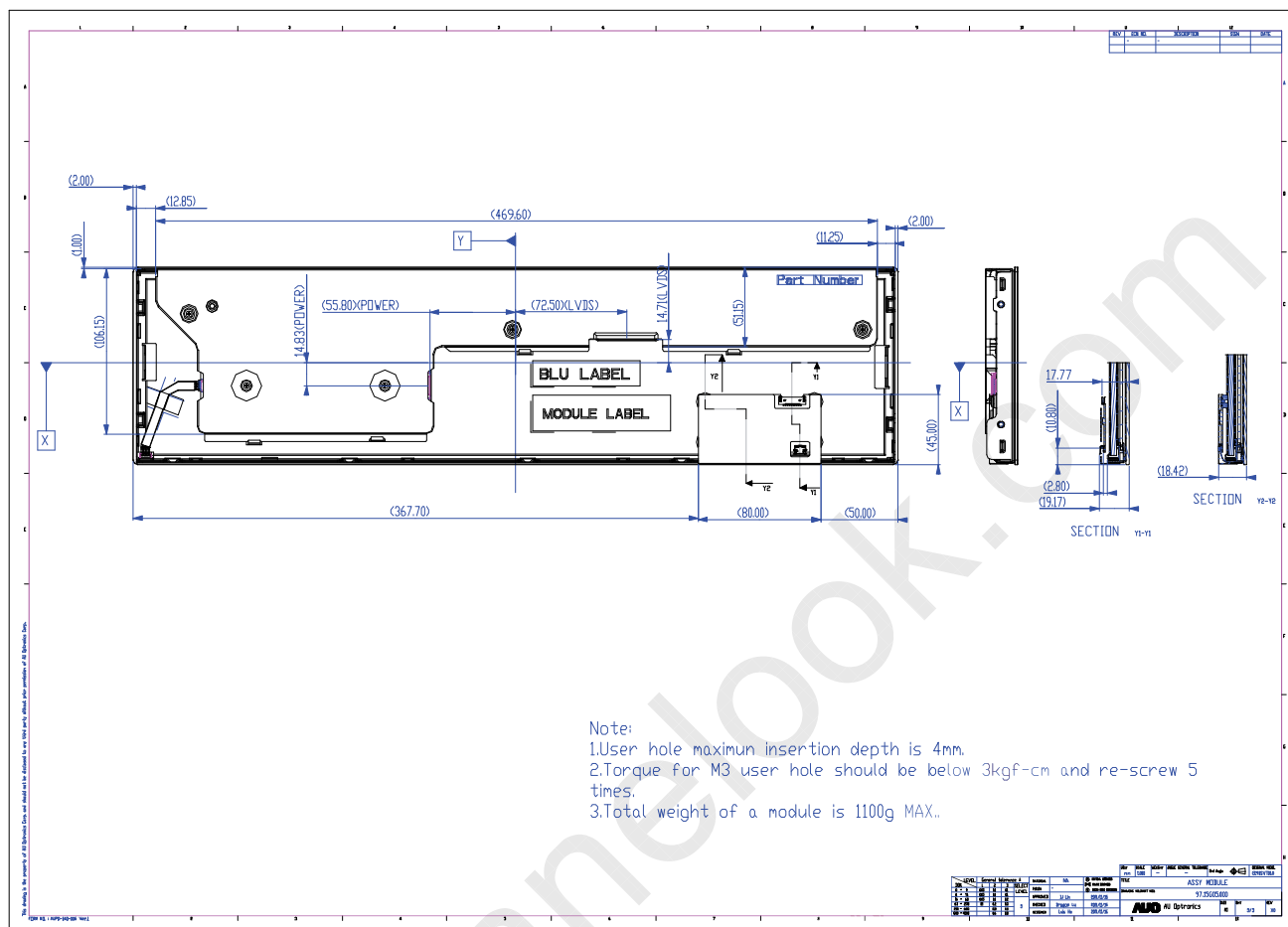




Product Specification

AU OPTRONICS CORPORATION

G190SVT01.0



Note:

- Note:
1. User hole maximum insertion depth is 4mm.
 2. Torque for M3 user hole should be below 3kgf-cm and re-screw 5 times.
 3. Total weight of a module is 1100g MAX.



Product Specification

G190SVT01.0

AU OPTRONICS CORPORATION

10. Label and Packaging

10.1 Definition of Label

- Panel Label

XXXXXXXXXXXX-XXXXXX





AUO Internal Use

Panel Unique ID



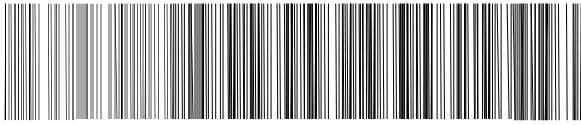


Green mark description

- (1) For Pb Free Product, AUO will add  for identification.
- (2) For RoHs compatible products, AUO will add  for identification.

Note: The green Mark will be present only when the green documents have been ready by AUO internal green team.
(definition of green design follows the AUO green design checklist.)

- Carton Label

AU Optronics	QTY : 11		
MODEL NO: G190SVT01.0			
PART NO: XX.XXXXX.XXX			
CUSTOMER NO:			
CARTON NO: 			
Made in XXXXXX		*XXXXXXXXXXXXXX*	

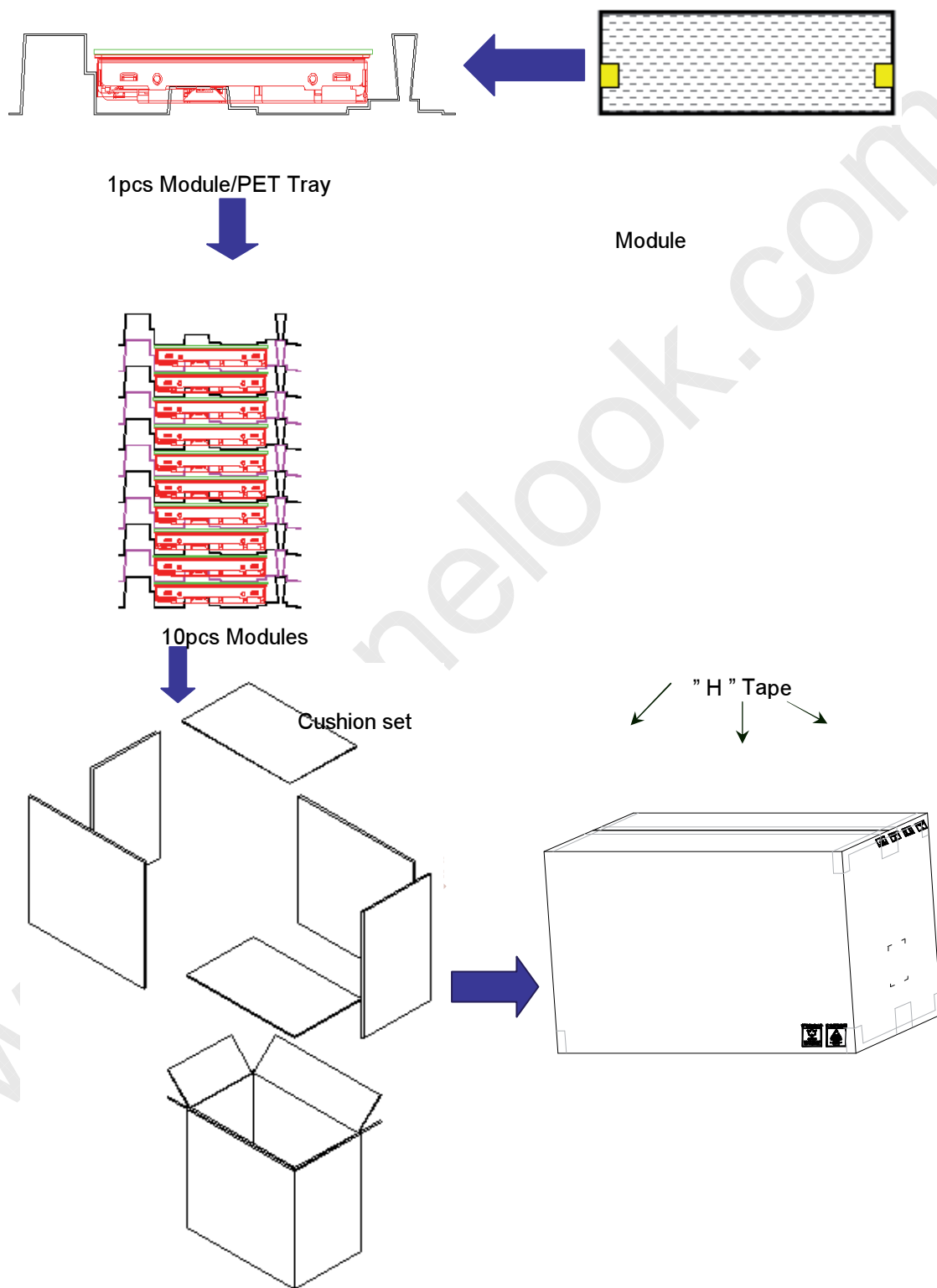


Product Specification

G190SVT01.0

AU OPTRONICS CORPORATION

10.2 Packaging Method





Product Specification

G190SVT01.0

AU OPTRONICS CORPORATION

10.3 Pallet and Shipment Information

Item	Specification			Packing Remark
	Qty.	Dimension	Total Weight (kg)	
Packing BOX	10pcs/box	662(L)*274(W)*418(H)	20.66kg	Box = 1.20kg
				Cushion = 3.46kg
Pallet	1	1150(L)*690(W)*132(H)	15kg	
Boxes per Pallet	12 boxes/pallet			
Panels per Pallet	120pcs/pallet			
Pallet after packing (40' container)	34	1150(L)*690(W)*1386(H)	263kg	



Product Specification

G190SVT01.0

AU OPTRONICS CORPORATION

11. Safety

11.1 Sharp Edge Requirements

There will be no sharp edges or comers on the display assembly that could cause injury.

11.2 Materials

11.2.1 Toxicity

There will be no carcinogenic materials used anywhere in the display module. If toxic materials are used, they will be reviewed and approved by the responsible AUO toxicologist.

11.2.2 Flammability

All components including electrical components that do not meet the flammability grade UL94-V1 in the module will complete the flammability rating exception approval process.

The printed circuit board will be made from material rated 94-V1 or better. The actual UL flammability rating will be printed on the printed circuit board.

11.3 Capacitors

If any polarized capacitors are used in the display assembly, provisions will be made to keep them from being inserted backwards.

11.4 National Test Lab Requirement

The display module will satisfy all requirements for compliance to:

UL 60950-1, 2nd Edition, 2007-03027 (Information Technology Equipment)