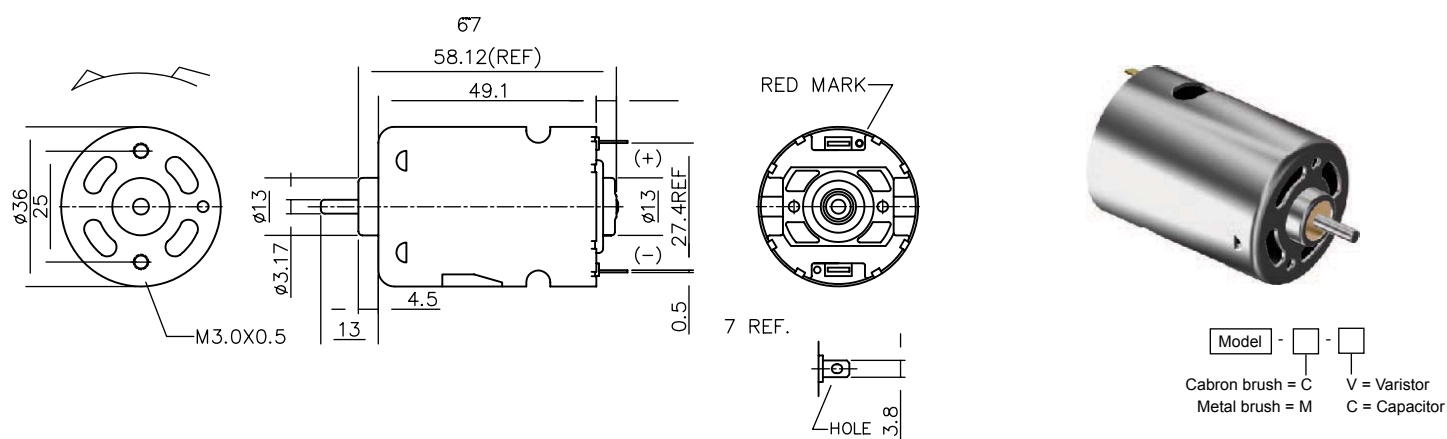


H_3SFN series Ø36 mm 3.3-67 W



MOTOR DATA				
Part name	HS3SFN-7523-CC	HD3SFN-6040-CC	HS3SFN-22240-CVC	HD3SFN-6035-CC
Diameter (mm)	36	36	36	36
Lenth (mm)	49.1	49.1	49.1	49.1
Nominal voltage (V)	4.8	6	12	12
Nominal speed (rpm)	11600	7300	2600	17200
Nominal torque (mNm)	23.9	32.0	12.3	37.3
Nominal current A	9.1	5.9	0.4	8.3
No load speed (rpm)	14000	8600	3100	20500
No load current A	1.80	1.00	0.12	1.00
Stall torque (mNm)	165.2	232.8	77.5	286.3
Starting current (A)	53.8	38.7	2.3	56.3
Output (W)	29	25	3.3	67
Efficiency (%)	68	70	62	68
Operating temperature deg. C	-10..+60	-10..+60	-10..+60	-10..+60