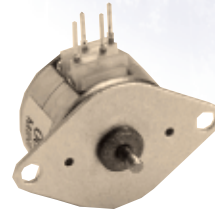
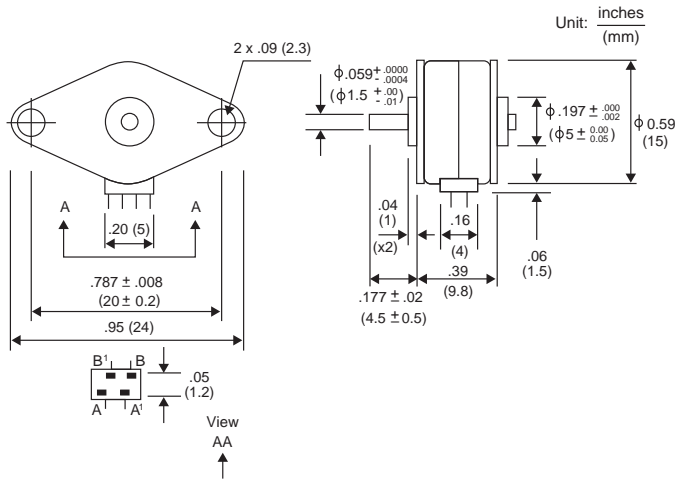


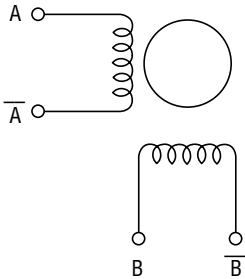
# 06BJ-H 18° PERMANENT MAGNET

# 06BJ-H 18°

# PERMANENT MAGNET



## WINDING DIAGRAM



## GENERAL SPECIFICATIONS

Step Angle .....	18°
Step Angle Accuracy .....	+/-1°
Temperature Rise .....	80° C Max.
Ambient Temperature Range .....	-10° to +50° C
Insulation Resistance .....	100MΩ Min., 500 VDC
Dielectric Strength .....	500 VAC for 1 min.
Radial Play .....	0.05 mm Max. (100 g-load)
End Play .....	0.3 mm Max. (100 g-load)
Switching Sequence .....	See page 31

## MODEL SPECIFICATIONS

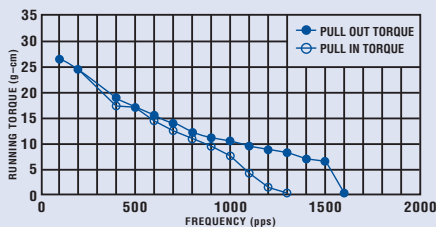
Model Number	Rated Voltage V	Rated Current/ Phase A	Winding Resistance/ Phase Ω	Holding Torque g-cm	Inductance mH	Rotor Inertia g-cm <sup>2</sup>	Detent Torque g-cm	Weight g
06BJ-H005	5.0	0.25	20.0	27	7.0	0.06	2.5	8
06BJ-H012	12.0	0.12	100.0	30	37.0	0.06	2.5	8

Note: This size is available in a bipolar winding only.

## TORQUE/SPEED CHARACTERISTICS

### Model: 06BJ-H005

Driver: Bipolar L/R Drive Dual Step  
Supply Voltage: 5.0 (Volt)  
Drive Current: 0.25 (A/PH)



### Model: 06BJ-H012

Driver: Bipolar L/R Drive Dual Step  
Supply Voltage: 12.0 (Volt)  
Drive Current: 0.12 (A/PH)

