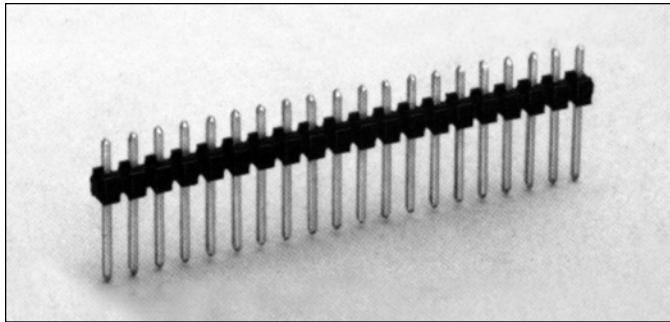


# .100" (2.54mm) Single Row, Through Hole, Vertical Header



## 9100 SERIES ("POST/BOXE")

### PART NUMBER LEGEND

#### 91XX-1-1XX-XX

- PIN NUMBER**  
(SEE TABLE II)
- NUMBER OF POSITIONS**  
(SEE TABLE I)
- PIN PLATING**  
(SEE NOTE 3)
- INSULATOR MATERIAL**  
(SEE NOTE 1)

## MATING CONNECTORS: 9000 SERIES

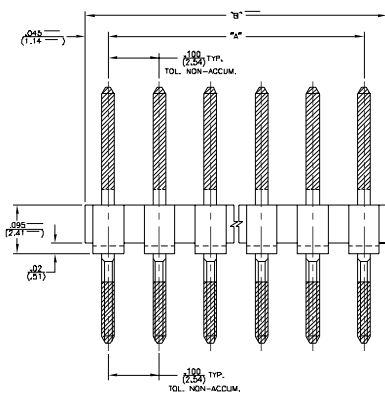


FIGURE I  
(FOR SEL. PLATED PINS ONLY)  
P/N'S: 9198, 9192-1-1XX-XX

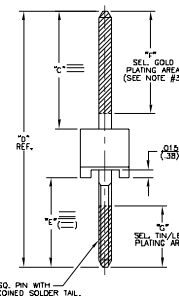
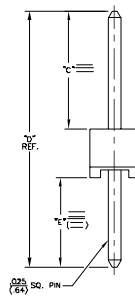


FIGURE II  
(FOR OVERALL PLATED PINS ONLY)  
P/N'S: 9190 & 9192-1-1XX-XX



### NOTES:

- 1) INSULATOR MATERIAL:  
9192-1-1XX-XX - POLYESTER (PET), 30% GLASS REINFORCED, UL 94V-0, COLOR: BLACK  
9193-1-1XX-XX - POLYESTER (PCT), 30% GLASS REINFORCED, UL 94V-0, COLOR: BLACK
- 2) PIN MATERIAL: PHOSPHOR BRONZE
- 3) PIN FINISH: 9192-1-1XX-XX - .000150/.0003 BRUTE TIN OVER .000050/.000150 NICKEL PLATE.  
9193-1-1XX-XX - .000015 MIN. GOLD OVER .000050/.000150 NICKEL PLATE.  
9198-1-1XX-XX - .000030 SELECTIVE GOLD PLATE IN CONTACT AREA OVER .000050/.000150 NICKEL PLATE ALL OVER. .0001/.0002 SEL. 90/10 TIN/LEAD OR SOLDER TAIL AS PER DRWG.  
9192-1-1XX-XX - .000015 SELECTIVE GOLD PLATE IN CONTACT AREA OVER .000050/.000150 NICKEL PLATE ALL OVER. .0001/.0002 SEL. 90/10 TIN/LEAD OR SOLDER TAIL AS PER DRWG.
- 4) ALL DIMS ARE IN IN/(MM).
- 5) PIN RETENTION: 2 LBS. MINIMUM

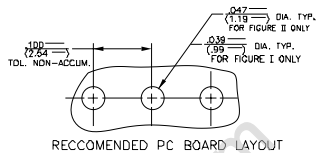


TABLE II

PART NUMBER	DIM "A"	DIM "B"	DIM "C"	DIM "D"	DIM "E"	DIM "F"	DIM "G"
9190-1-1XX-01	.100 (2.54)	.190 (4.83)	.200 (5.08)	.200 (5.08)	.200 (5.08)	.200 (5.08)	.190 (4.83)
-02	.230 (5.84)	.445 (11.30)	.445 (11.30)	.445 (11.30)	.445 (11.30)	.445 (11.30)	.445 (11.30)
-03	.320 (8.13)	.590 (14.99)	.590 (14.99)	.590 (14.99)	.590 (14.99)	.590 (14.99)	.590 (14.99)
-04	.450 (11.30)	.820 (20.83)	.820 (20.83)	.820 (20.83)	.820 (20.83)	.820 (20.83)	.820 (20.83)
-05	.550 (13.97)	.980 (24.93)	.980 (24.93)	.980 (24.93)	.980 (24.93)	.980 (24.93)	.980 (24.93)
-06	.650 (16.51)	1.150 (29.27)	1.150 (29.27)	1.150 (29.27)	1.150 (29.27)	1.150 (29.27)	1.150 (29.27)
-07	.750 (19.05)	1.320 (33.53)	1.320 (33.53)	1.320 (33.53)	1.320 (33.53)	1.320 (33.53)	1.320 (33.53)
-08	.850 (21.59)	1.490 (37.87)	1.490 (37.87)	1.490 (37.87)	1.490 (37.87)	1.490 (37.87)	1.490 (37.87)
-09	.950 (24.13)	1.660 (42.17)	1.660 (42.17)	1.660 (42.17)	1.660 (42.17)	1.660 (42.17)	1.660 (42.17)
-10	1.050 (26.67)	1.830 (46.47)	1.830 (46.47)	1.830 (46.47)	1.830 (46.47)	1.830 (46.47)	1.830 (46.47)
-11	1.150 (29.21)	2.000 (50.77)	2.000 (50.77)	2.000 (50.77)	2.000 (50.77)	2.000 (50.77)	2.000 (50.77)
-12	1.250 (31.75)	2.170 (55.07)	2.170 (55.07)	2.170 (55.07)	2.170 (55.07)	2.170 (55.07)	2.170 (55.07)
-13	1.350 (34.29)	2.340 (59.37)	2.340 (59.37)	2.340 (59.37)	2.340 (59.37)	2.340 (59.37)	2.340 (59.37)
-14	1.450 (36.83)	2.510 (63.67)	2.510 (63.67)	2.510 (63.67)	2.510 (63.67)	2.510 (63.67)	2.510 (63.67)
-15	1.550 (39.37)	2.680 (67.97)	2.680 (67.97)	2.680 (67.97)	2.680 (67.97)	2.680 (67.97)	2.680 (67.97)
-16	1.650 (41.91)	2.850 (72.27)	2.850 (72.27)	2.850 (72.27)	2.850 (72.27)	2.850 (72.27)	2.850 (72.27)
-17	1.750 (44.45)	3.020 (76.57)	3.020 (76.57)	3.020 (76.57)	3.020 (76.57)	3.020 (76.57)	3.020 (76.57)
-18	1.850 (46.99)	3.190 (80.87)	3.190 (80.87)	3.190 (80.87)	3.190 (80.87)	3.190 (80.87)	3.190 (80.87)
-19	1.950 (49.53)	3.360 (85.17)	3.360 (85.17)	3.360 (85.17)	3.360 (85.17)	3.360 (85.17)	3.360 (85.17)
-20	2.050 (52.07)	3.530 (89.47)	3.530 (89.47)	3.530 (89.47)	3.530 (89.47)	3.530 (89.47)	3.530 (89.47)
-21	2.150 (54.61)	3.700 (93.77)	3.700 (93.77)	3.700 (93.77)	3.700 (93.77)	3.700 (93.77)	3.700 (93.77)
-22	2.250 (57.15)	3.870 (98.07)	3.870 (98.07)	3.870 (98.07)	3.870 (98.07)	3.870 (98.07)	3.870 (98.07)
-23	2.350 (59.69)	4.040 (102.37)	4.040 (102.37)	4.040 (102.37)	4.040 (102.37)	4.040 (102.37)	4.040 (102.37)
-24	2.450 (62.23)	4.210 (106.67)	4.210 (106.67)	4.210 (106.67)	4.210 (106.67)	4.210 (106.67)	4.210 (106.67)
-25	2.550 (64.77)	4.380 (110.97)	4.380 (110.97)	4.380 (110.97)	4.380 (110.97)	4.380 (110.97)	4.380 (110.97)
-26	2.650 (67.31)	4.550 (115.27)	4.550 (115.27)	4.550 (115.27)	4.550 (115.27)	4.550 (115.27)	4.550 (115.27)
-27	2.750 (69.85)	4.720 (119.57)	4.720 (119.57)	4.720 (119.57)	4.720 (119.57)	4.720 (119.57)	4.720 (119.57)
-28	2.850 (72.39)	4.890 (123.87)	4.890 (123.87)	4.890 (123.87)	4.890 (123.87)	4.890 (123.87)	4.890 (123.87)
-29	2.950 (74.93)	5.060 (128.17)	5.060 (128.17)	5.060 (128.17)	5.060 (128.17)	5.060 (128.17)	5.060 (128.17)
-30	3.050 (77.47)	5.230 (132.47)	5.230 (132.47)	5.230 (132.47)	5.230 (132.47)	5.230 (132.47)	5.230 (132.47)
-31	3.150 (80.01)	5.400 (136.77)	5.400 (136.77)	5.400 (136.77)	5.400 (136.77)	5.400 (136.77)	5.400 (136.77)
-32	3.250 (82.55)	5.570 (141.07)	5.570 (141.07)	5.570 (141.07)	5.570 (141.07)	5.570 (141.07)	5.570 (141.07)
-33	3.350 (85.09)	5.740 (145.37)	5.740 (145.37)	5.740 (145.37)	5.740 (145.37)	5.740 (145.37)	5.740 (145.37)
-34	3.450 (87.63)	5.910 (149.67)	5.910 (149.67)	5.910 (149.67)	5.910 (149.67)	5.910 (149.67)	5.910 (149.67)
-35	3.550 (90.17)	6.080 (153.97)	6.080 (153.97)	6.080 (153.97)	6.080 (153.97)	6.080 (153.97)	6.080 (153.97)
-36	3.650 (92.71)	6.250 (158.27)	6.250 (158.27)	6.250 (158.27)	6.250 (158.27)	6.250 (158.27)	6.250 (158.27)
-37	3.750 (95.25)	6.420 (162.57)	6.420 (162.57)	6.420 (162.57)	6.420 (162.57)	6.420 (162.57)	6.420 (162.57)
-38	3.850 (97.79)	6.590 (166.87)	6.590 (166.87)	6.590 (166.87)	6.590 (166.87)	6.590 (166.87)	6.590 (166.87)
-39	3.950 (100.33)	6.760 (171.17)	6.760 (171.17)	6.760 (171.17)	6.760 (171.17)	6.760 (171.17)	6.760 (171.17)
-40	4.050 (102.87)	6.930 (175.47)	6.930 (175.47)	6.930 (175.47)	6.930 (175.47)	6.930 (175.47)	6.930 (175.47)

TABLE I

PART NUMBER	NO. OF POSITIONS	DIM. "A"	DIM. "B"
9190-1-102-XX	2	.100 (2.54)	.190 (4.83)
-103-	3	.200 (5.08)	.290 (7.37)
-104-	4	.300 (7.62)	.390 (9.91)
-105-	5	.400 (10.16)	.490 (12.45)
-106-	6	.500 (12.70)	.590 (14.99)
-107-	7	.600 (15.24)	.690 (17.53)
-108-	8	.700 (17.78)	.790 (20.07)
-109-	9	.800 (20.32)	.890 (22.61)
-110-	10	.900 (22.86)	.990 (25.15)
-111-	11	1.000 (25.40)	1.090 (27.69)
-112-	12	1.100 (27.94)	1.190 (30.23)
-113-	13	1.200 (30.48)	1.290 (32.77)
-114-	14	1.300 (33.02)	1.390 (35.31)
-115-	15	1.400 (35.56)	1.490 (37.85)
-116-	16	1.500 (38.10)	1.590 (40.39)
-117-	17	1.600 (40.64)	1.690 (42.93)
-118-	18	1.700 (43.18)	1.790 (45.47)
-119-	19	1.800 (45.72)	1.890 (48.01)
-120-	20	1.900 (48.26)	1.990 (50.55)
-121-	21	2.000 (50.80)	2.090 (53.09)
-122-	22	2.100 (53.34)	2.190 (55.63)
-123-	23	2.200 (55.88)	2.290 (58.17)
-124-	24	2.300 (58.42)	2.390 (60.71)
-125-	25	2.400 (60.96)	2.490 (63.25)
-126-	26	2.500 (63.50)	2.590 (65.79)
-127-	27	2.600 (66.04)	2.690 (68.33)
-128-	28	2.700 (68.58)	2.790 (70.87)
-129-	29	2.800 (71.12)	2.890 (73.41)
-130-	30	2.900 (73.66)	2.990 (75.95)
-131-	31	3.000 (76.20)	3.090 (78.49)
-132-	32	3.100 (78.74)	3.190 (81.03)
-133-	33	3.200 (81.28)	3.290 (83.57)
-134-	34	3.300 (83.82)	3.390 (86.11)
-135-	35	3.400 (86.36)	3.490 (88.65)
-136-	36	3.500 (88.90)	3.590 (91.19)
-137-	37	3.600 (91.44)	3.690 (93.73)
-138-	38	3.700 (93.98)	3.790 (96.27)
-139-	39	3.800 (96.52)	3.890 (98.81)
-140-	40	3.900 (99.06)	3.990 (101.35)