



5-phase stepping motor

28mm sq. 103H35□□-70□□
0.72°/step

●Applicable drivers



Specifications

Motor with leads

Model number	Holding torque at 5-phase energization		Rated current		resistance	inductance	Rotor inertia	Mass (Weight)
	Single shaft	Double shaft	N.m(oz·in) MIN.	A/phase				
103H3505-7070	-7020	0.026(3.68)	0.75	1.2	0.32	0.009(0.05)	0.11(0.24)	
103H3515-7070	-7020	0.052(7.36)	0.75	1.5	0.4	0.016(0.09)	0.2(0.44)	

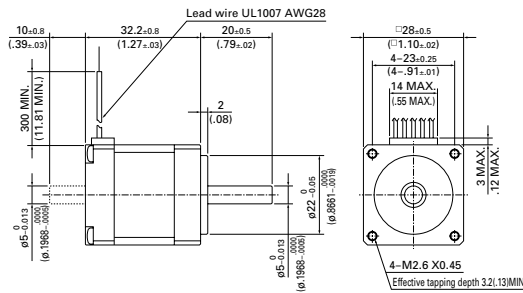
Motor with connector

Model number	Holding torque at 5-phase energization		Rated current		resistance	inductance	Rotor inertia	Mass (Weight)
	Single shaft	Double shaft	N.m(oz·in) MIN.	A/phase				
103H3505-7040	-7010	0.026(3.68)	0.75	1.1	0.32	0.009(0.05)	0.11(0.24)	
103H3515-7040	-7010	0.052(7.36)	0.75	1.4	0.4	0.016(0.09)	0.2(0.44)	

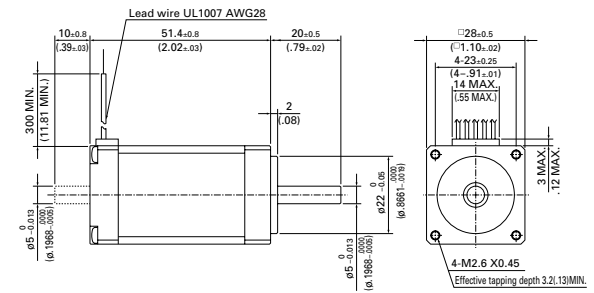
Dimensions [unit:mm(inch)]

Motor with leads

103H3505-7070 (Single shaft)
103H3505-7020 (Double shaft)



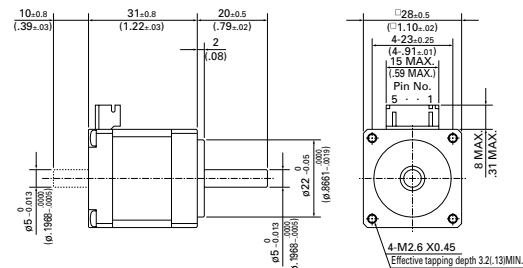
103H3515-7070 (Single shaft)
103H3515-7020 (Double shaft)



Motor with connector

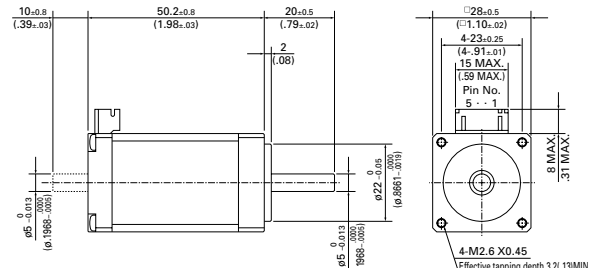
103H3505-7040 (Single shaft)
103H3505-7010 (Double shaft)

Applicable connector
(Japan Solderless Terminals)
Housing : PHR-5
Contact : SPH-002T-P0.5S



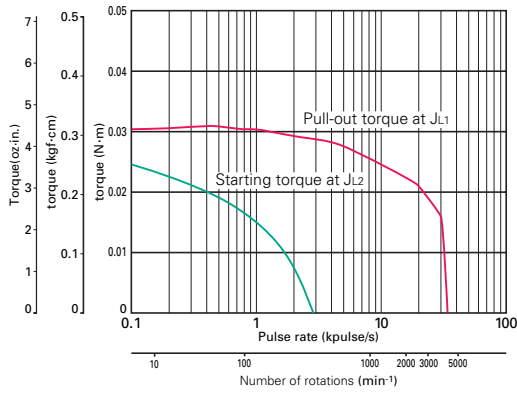
103H3515-7040 (Single shaft)
103H3515-7010 (Double shaft)

Applicable connector
(Japan Solderless Terminals)
Housing : PHR-5
Contact : SPH-002T-P0.5S



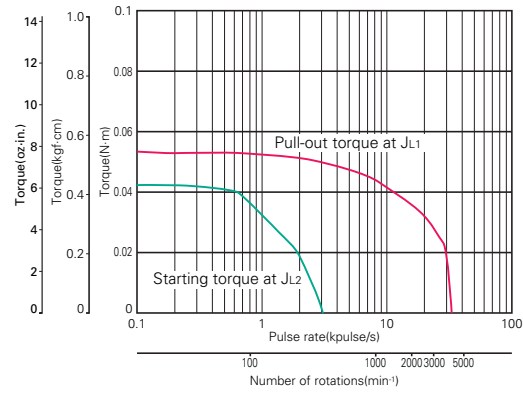
Pulse rate-torque characteristics

●103H3505-7040/103H3505-7070



Sanyo constant current circuit
 Source voltage : 24V DC-Operating current : 0.75A/phase
 5-phase excitation (Full step)
 $J_{L1}=0.01 \times 10^{-4} \text{kg}\cdot\text{m}^2$ [0.05 oz·in²] (Pulley balancer system)
 $J_{L2}=0.01 \times 10^{-4} \text{kg}\cdot\text{m}^2$ [0.05 oz·in²] (Pulley balancer system)

●103H3515-7040/103H3515-7070



Sanyo constant current circuit
 Source voltage : 24V DC-Operating current : 0.75A/phase
 5-phase excitation (Full step)
 $J_{L1}=0.01 \times 10^{-4} \text{kg}\cdot\text{m}^2$ [0.05 oz·in²] (Pulley balancer system)
 $J_{L2}=0.01 \times 10^{-4} \text{kg}\cdot\text{m}^2$ [0.05 oz·in²] (Pulley balancer system)

- 39mm (0.36")
- 60mm (0.45")
- 28mm (0.72")
- 42mm (0.72")
- 50mm (0.72")
- 60mm (0.72")
- 60mm (0.72")
- 86mm (0.72")
- 106mm (0.72")
- CE marked
- Specifications of 5-phase stepping motor
- In-vacuum stepping motor