



## 5-phase stepping motor

**42mm sq.** 103H55□□-70□□  
0.72°/step

### ●Applicable drivers

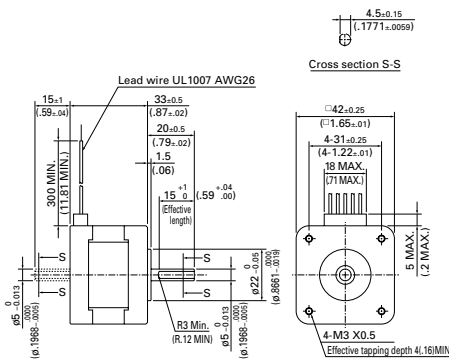


## Specifications

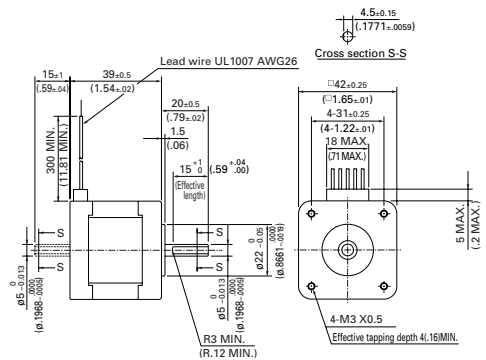
Model number		Holding torque at 5-phase energization	Rated current	resistance	inductance	Rotor inertia	Mass (Weight)
Single shaft	Double shaft	N.m(oz-in) MIN.	A/phase	Ω/phase	mH/phase	$\times 10^{-4}$ kg-m <sup>2</sup> (oz-in <sup>2</sup> )	kg(lbs)
103H5505-7040	-7010	0.127(17.98)	0.75	1.45	1.2	0.03(0.16)	0.23(0.50)
103H5508-7040	-7010	0.176(24.92)	0.75	1.6	1.8	0.053(0.29)	0.28(0.62)
103H5510-7040	-7010	0.255(36.11)	0.75	2.2	2.2	0.065(0.36)	0.37(0.82)

## Dimensions [unit:mm(inch)]

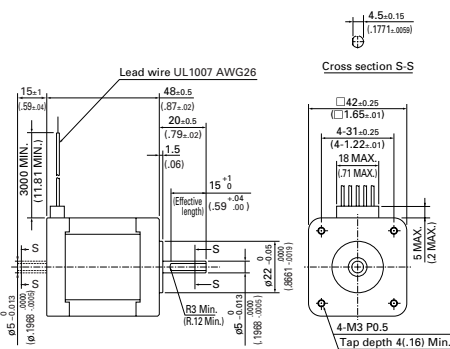
103H5505-7040 (Single shaft)  
103H5505-7010 (Double shaft)



103H5508-7040 (Single shaft)  
103H5508-7010 (Double shaft)

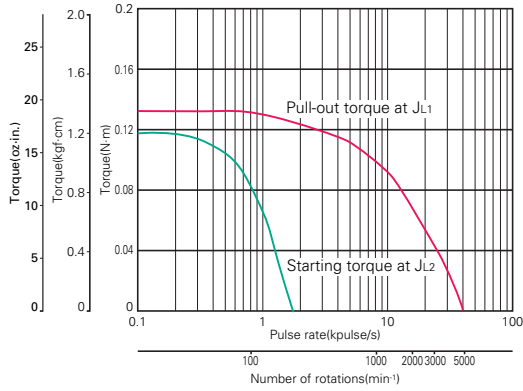


103H5510-7040 (Single shaft)  
103H5510-7010 (Double shaft)



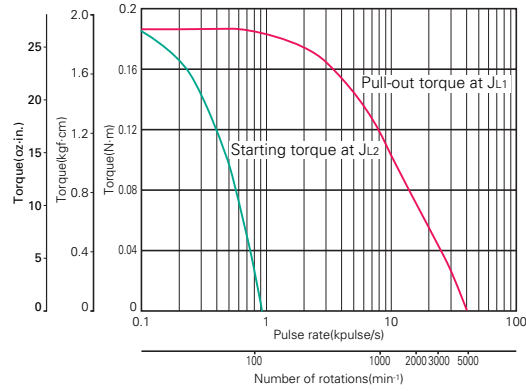
# Pulse rate-torque characteristics

## ●103H5505-7040



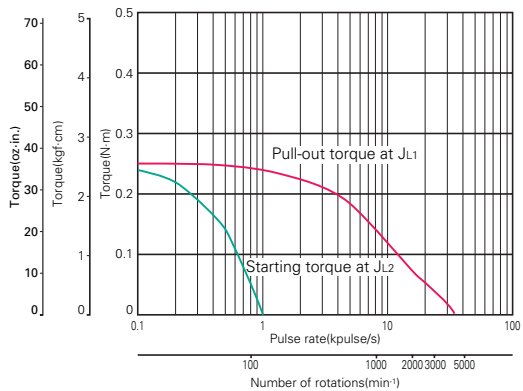
Sanyo constant current circuit  
 Source voltage : 24V DC-Operating current : 0.75A/phase  
 5-phase excitation (Full step)  
 $J_{L1}=0.94 \times 10^{-4} \text{kg}\cdot\text{m}^2$  [5.14 oz-in<sup>2</sup>] (Use the rubber coupling)  
 $J_{L2}=0.8 \times 10^{-4} \text{kg}\cdot\text{m}^2$  [4.37 oz-in<sup>2</sup>] (Use the direct coupling)

## ●103H5508-7040



Sanyo constant current circuit  
 Source voltage : 24V DC-Operating current : 0.75A/phase  
 5-phase excitation (Full step)  
 $J_{L1}=0.94 \times 10^{-4} \text{kg}\cdot\text{m}^2$  [5.14 oz-in<sup>2</sup>] (Use the rubber coupling)  
 $J_{L2}=0.8 \times 10^{-4} \text{kg}\cdot\text{m}^2$  [4.37 oz-in<sup>2</sup>] (Use the direct coupling)

## ●103H5510-7040



Sanyo constant current circuit  
 Source voltage : 24V DC-Operating current : 0.75A/phase  
 5-phase excitation (Full step)  
 $J_{L1}=0.94 \times 10^{-4} \text{kg}\cdot\text{m}^2$  [5.14 oz-in<sup>2</sup>] (Use the rubber coupling)  
 $J_{L2}=0.8 \times 10^{-4} \text{kg}\cdot\text{m}^2$  [4.37 oz-in<sup>2</sup>] (Use the direct coupling)

- 39mm (0.36")
- 60mm (0.45")
- 28mm (0.72")
- 42mm (0.72")
- 50mm (0.72")
- 60mm (0.72")
- 86mm (0.72")
- 106mm (0.72")
- CE marked
- Specifications of 5-phase stepping motor
- In-vacuum stepping motor