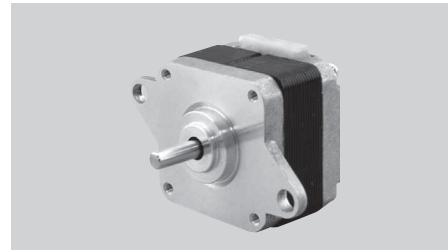


10HF SERIES 3.75°

Key Features

- High Speed
- High Acceleration
- Low Noise



General Specifications

- Bi-polar

| Series & Length | Model Number | Holding Torque | | Rated Current | Resistance per Phase | Inductance per Phase | Detent Torque | | Rotor Inertia | |
|--------------------------------|--------------|----------------|-------|---------------|----------------------|----------------------|---------------|-------|-------------------|--------------------|
| | | mNm | oz-in | A | ohm | mH | mNm | oz-in | g.cm ² | oz-in ² |
| 10HF3 18.5 mm (0.72 in.) | 10HF3001 | 12 | 1.70 | 0.3 | 14 | 5.8 | 2.9 | 0.411 | 2 | 0.011 |
| | 10HF3002 | 12 | 1.70 | 0.6 | 3.6 | 1.6 | 2.9 | 0.411 | 2 | 0.011 |
| 10HF5 18.5 mm (0.72 in.) | 10HF5001 | 19 | 2.69 | 0.3 | 18 | 10.7 | 3.9 | 0.553 | 3 | 0.016 |
| | 10HF5002 | 19 | 2.69 | 0.6 | 4.6 | 3 | 3.9 | 0.553 | 3 | 0.016 |
| 10HF7 18.5 mm (0.72 in.) | 10HF7402-02 | 15 | 2.13 | 0.143 | 84 | 18 | 3 | 0.42 | 2 | 0.01 |

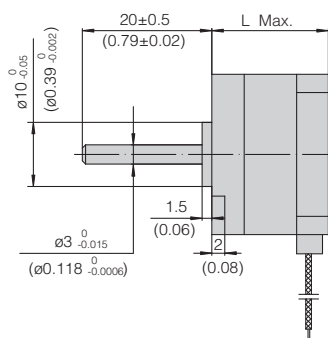
- Uni-polar

| Series & Length | Model Number | Holding Torque | | Rated Current | Resistance per Phase | Inductance per Phase | Detent Torque | | Rotor Inertia | |
|--------------------------------|--------------|----------------|-------|---------------|----------------------|----------------------|---------------|-------|-------------------|--------------------|
| | | mNm | oz-in | A | ohm | mH | mNm | oz-in | g.cm ² | oz-in ² |
| 10HF7 18.5 mm (0.72 in.) | 10HF7602-03 | 9 | 1.28 | 0.2 | 42 | 4.5 | 3 | 0.42 | 2 | 0.01 |

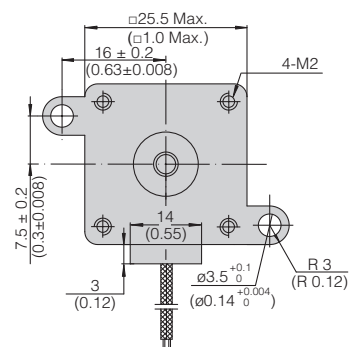
- Wiring Connection, Lead Wires, Schematic Diagrams & Stepping Sequence.....Page 62 - 64

Mechanical Dimension

| Series | L | Mass |
|--------|----------------|-----------------|
| | mm (in.) | kg (lb.) |
| 10HF7 | 18.5 (0.72) | 0.045 (0.10) |



Unit: mm(inch)



Why Stepping Motor

encapsulated 2 phase NEMA 14

encapsulated 3 phase NEMA 14 NEMA 17

new release 2 phase NEMA 8

new release 2 phase NEMA 14

new release 2 phase NEMA 16

2 phase NEMA 10 25.0 mm (1.00 inch)

2 phase NEMA 11 28.0 mm (1.10 inch)

2 phase NEMA 14 35.0 mm (1.38 inch)

2 phase NEMA 16 39.0 mm (1.53 inch)

2 phase NEMA 17 42.0 mm (1.65 inch)

2 phase NEMA 23 56.0 mm (2.22 inch)

2 phase NEMA 24 60.0 mm (2.36 inch)

2 phase NEMA 34 86.0 mm (3.39 inch)

3 phase NEMA 24 60.0 mm (2.36 inch)

3 phase NEMA 34 86.0 mm (3.39 inch)

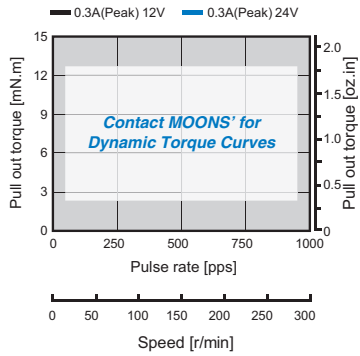
how to select

Dynamic Torque Curves

- Bi-polar

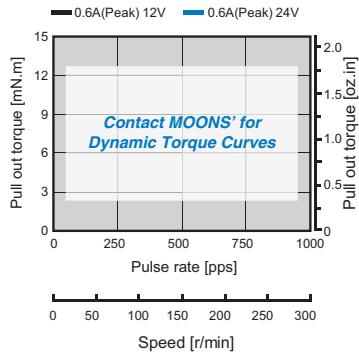
10HF3001

Conditions: Bi-polar Constant Current Driver
 Driver: AMA MS3540M
 Mode: Full Step



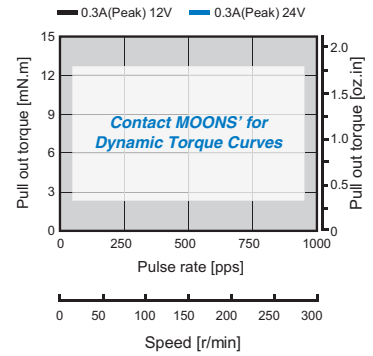
10HF3002

Conditions: Bi-polar Constant Current Driver
 Driver: AMA MS3540M
 Mode: Full Step



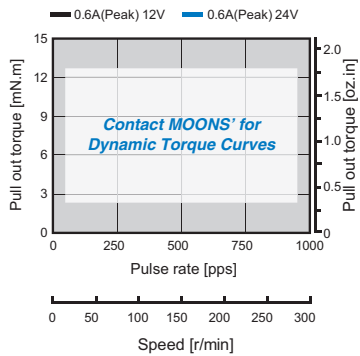
10HF5001

Conditions: Bi-polar Constant Current Driver
 Driver: AMA MS3540M
 Mode: Full Step



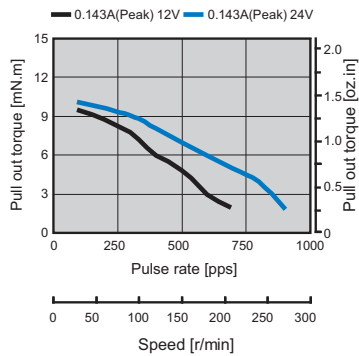
10HF5002

Conditions: Bi-polar Constant Current Driver
 Driver: AMA MS3540M
 Mode: Full Step



10HF7402-02

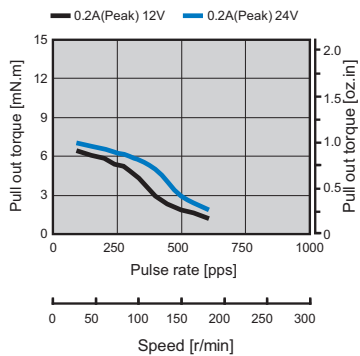
Conditions: Bi-polar Constant Current Driver
 Driver: AMA MS3540M
 Mode: Full Step



- Uni-polar

10HF7602-03

Conditions: Uni-polar Constant Current Driver
 Driver: AMA MSU3040M
 Mode: Full Step



Why Stepping Motor

encapsulated 2 phase NEMA 14

encapsulated 3 phase NEMA 14 NEMA 17

new release 2 phase NEMA 8

new release 2 phase NEMA 14

new release 2 phase NEMA 16

2 phase NEMA 10 25.0 mm (1.00 inch)

2 phase NEMA 11 28.0 mm (1.10 inch)

2 phase NEMA 14 35.0 mm (1.38 inch)

2 phase NEMA 16 39.0 mm (1.53 inch)

2 phase NEMA 17 42.0 mm (1.65 inch)

2 phase NEMA 23 56.0 mm (2.22 inch)

2 phase NEMA 24 60.0 mm (2.36 inch)

2 phase NEMA 34 86.0 mm (3.39 inch)

3 phase NEMA 24 60.0 mm (2.36 inch)

3 phase NEMA 34 86.0 mm (3.39 inch)

how to select