



12N90

Power MOSFET

12A, 900V N-CHANNEL POWER MOSFET

DESCRIPTION

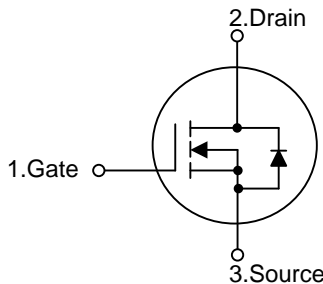
The UTC 12N90 is an N-channel enhancement mode power MOSFET using UTC's advanced technology to provide customers with planar stripe and DMOS technology. This technology is specialized in allowing a minimum on-state resistance and superior switching performance. It also can withstand high energy pulse in the avalanche and commutation mode.

The UTC 12N90 is universally applied in high efficiency switch mode power supply.

FEATURES

- * $R_{DS(on)} \leq 1.1\Omega$ @ $V_{GS}=10V, I_D=6.0A$
- * High switching speed
- * 100% avalanche tested

SYMBOL

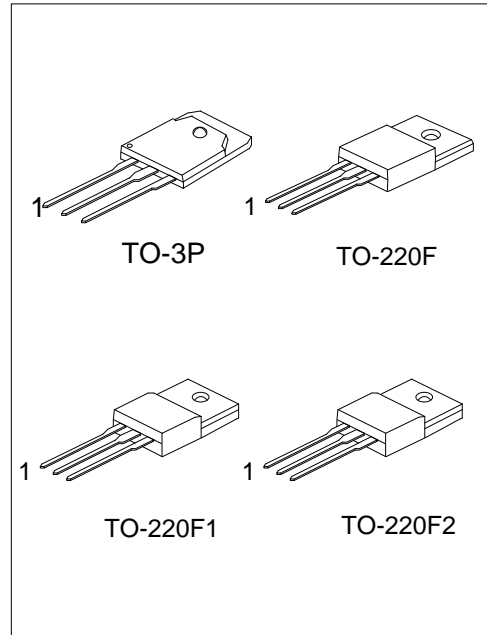


ORDERING INFORMATION

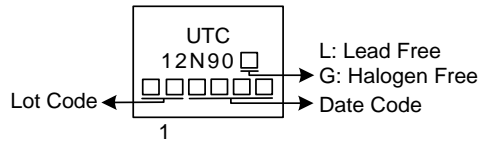
Ordering Number		Package	Pin Assignment			Packing
Lead Free	Halogen Free		1	2	3	
12N90L-TF1-T	12N90G-TF1-T	TO-220F1	G	D	S	Tube
12N90L-TF2-T	12N90G-TF2-T	TO-220F2	G	D	S	Tube
12N90L-TF3-T	12N90G-TF3-T	TO-220F	G	D	S	Tube
12N90L-T3P-T	12N90G-T3P-T	TO-3P	G	D	S	Tube

Note: Pin Assignment: G: Gate D: Drain S: Source

<p>12N90G-TF1-T</p>	<p>(1) T: Tube (2) TF1: TO-220F1, TF2: TO-220F2, TF3: TO-220F T3P: TO-3P (3) G: Halogen Free and Lead Free, L: Lead Free</p>
---------------------	---



MARKING



■ **ABSOLUTE MAXIMUM RATINGS** ($T_C = 25^\circ\text{C}$ unless otherwise specified)

PARAMETER		SYMBOL	RATINGS	UNIT
Drain-Source Voltage		V_{DSS}	900	V
Gate-Source Voltage		V_{GSS}	± 30	V
Drain Current	Continuous ($T_C=25^\circ\text{C}$)	I_D	12	A
	Pulsed (Note 2)	I_{DM}	48	A
Avalanche Current (Note 2)		I_{AR}	12	A
Single Pulsed Avalanche Energy (Note 3)		E_{AS}	800	mJ
Power Dissipation	TO-220F/TO-220F1	P_D	38	W
	TO-220F2			
	TO-3P		182	W
Junction Temperature		T_J	+150	$^\circ\text{C}$
Storage Temperature		T_{STG}	-55 ~ +150	$^\circ\text{C}$

Notes: 1. Absolute maximum ratings are those values beyond which the device could be permanently damaged.

Absolute maximum ratings are stress ratings only and functional device operation is not implied.

2. Repetitive Rating: Pulse width limited by maximum junction temperature.

3. $L=12\text{mH}$, $I_{AS}=11\text{A}$, $V_{DD}=50\text{V}$, $R_G=25\Omega$, Starting $T_J=25^\circ\text{C}$.

■ **THERMAL DATA**

PARAMETER		SYMBOL	RATINGS	UNIT
Junction to Ambient	TO-220F/TO-220F1	θ_{JA}	62.5	$^\circ\text{C/W}$
	TO-220F2			
	TO-3P		40	
Junction to Case	TO-220F/TO-220F1	θ_{JC}	3.28	$^\circ\text{C/W}$
	TO-220F2			
	TO-3P		0.68	

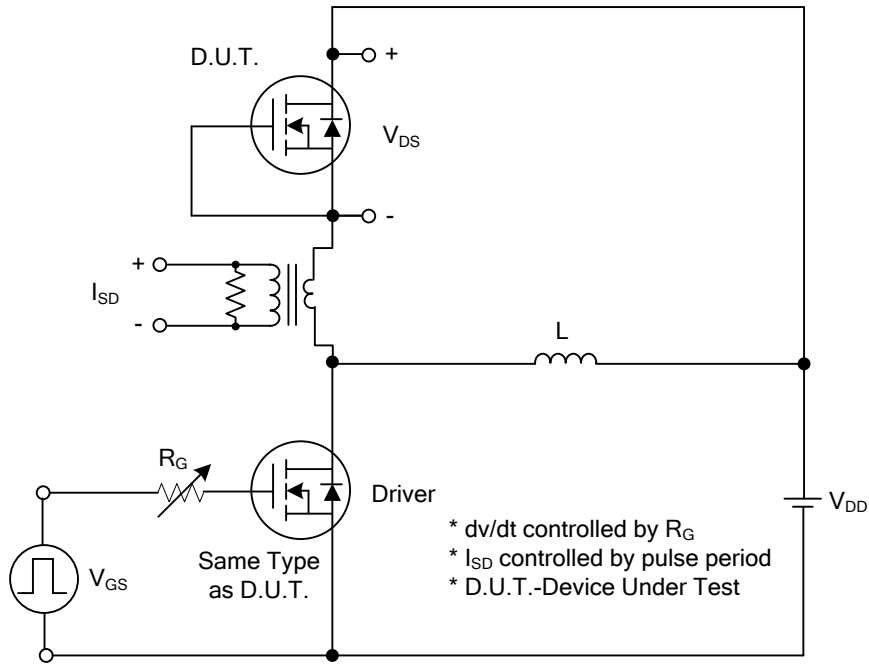
■ ELECTRICAL CHARACTERISTICS (T_J = 25°C unless otherwise specified)

PARAMETER	SYMBOL	TEST CONDITIONS	MIN	TYP	MAX	UNIT
OFF CHARACTERISTICS						
Drain-Source Breakdown Voltage	BV _{DSS}	I _D =250μA, V _{GS} =0V	900			V
Breakdown Voltage Temperature Coefficient	Δ BV _{DSS} /Δ T _J	I _D =250μA, Referenced to 25°C		1.0		V/°C
Drain-Source Leakage Current	I _{DSS}	V _{DS} =900V, V _{GS} =0V			10	μA
		V _{DS} =720V, T _C =125°C			100	
Gate- Source Leakage Current	Forward	V _{GS} =+30V, V _{DS} =0V			100	nA
	Reverse	V _{GS} =-30V, V _{DS} =0V			-100	nA
ON CHARACTERISTICS						
Gate Threshold Voltage	V _{GS(TH)}	V _{DS} =V _{GS} , I _D =250μA	3.0		5.0	V
Static Drain-Source On-State Resistance	R _{DS(ON)}	V _{GS} =10V, I _D =6A		0.95	1.1	Ω
DYNAMIC PARAMETERS						
Input Capacitance	C _{ISS}	V _{GS} =0V, V _{DS} =25V, f=1.0MHz		1800		pF
Output Capacitance	C _{OSS}			190		pF
Reverse Transfer Capacitance	C _{RSS}			20		pF
SWITCHING PARAMETERS						
Total Gate Charge	Q _G	V _{GS} =10V, V _{DD} =50V, I _D =1.3A, I _G =100μA (Note 1, 2)		59		nC
Gate to Source Charge	Q _{GS}			14		nC
Gate to Drain Charge	Q _{GD}			20		nC
Turn-ON Delay Time	t _{D(ON)}	V _{GS} =10V, V _{DD} =30V, I _D =0.5A, R _G =25Ω (Note 1, 2)		120		ns
Rise Time	t _R			200		ns
Turn-OFF Delay Time	t _{D(OFF)}			335		ns
Fall-Time	t _F			240		ns
SOURCE- DRAIN DIODE RATINGS AND CHARACTERISTICS						
Maximum Continuous Drain-Source Diode Forward Current	I _S				12	A
Maximum Pulsed Drain-Source Diode Forward Current	I _{SM}				48	A
Drain-Source Diode Forward Voltage	V _{SD}	I _S =12A, V _{GS} =0V			1.4	V
Body Diode Reverse Recovery Time	t _{rr}	V _{GS} =0V, I _S =12A,		1000		ns
Body Diode Reverse Recovery Charge	Q _{rr}	dI _F /dt=100A/μs (Note 1)		17.0		μC

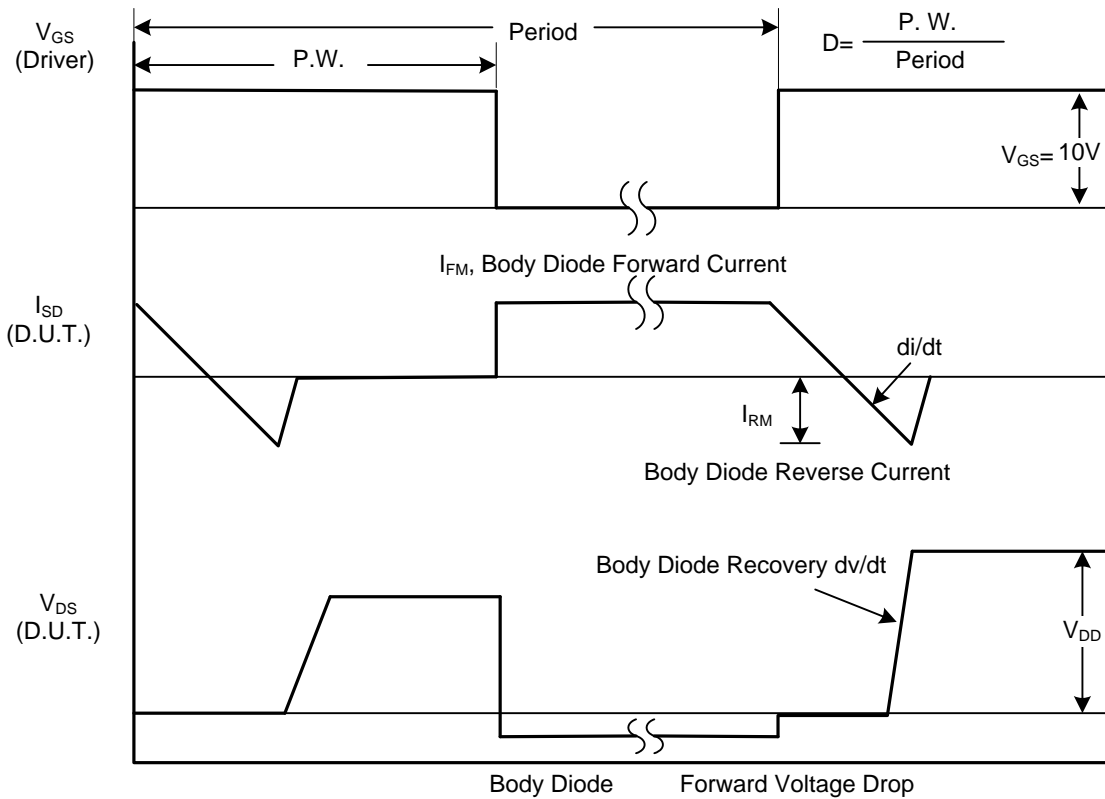
Notes: 1. Pulse Test: Pulse width ≤ 250μs, Duty cycle ≤ 2%.

2. Essentially independent of operating temperature.

■ TEST CIRCUITS AND WAVEFORMS

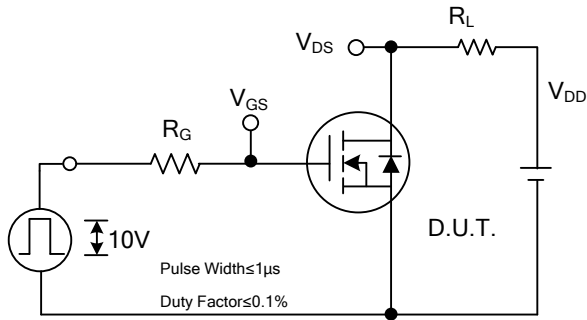


Peak Diode Recovery dv/dt Test Circuit

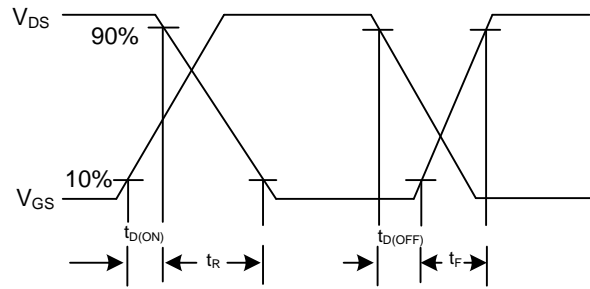


Peak Diode Recovery dv/dt Waveforms

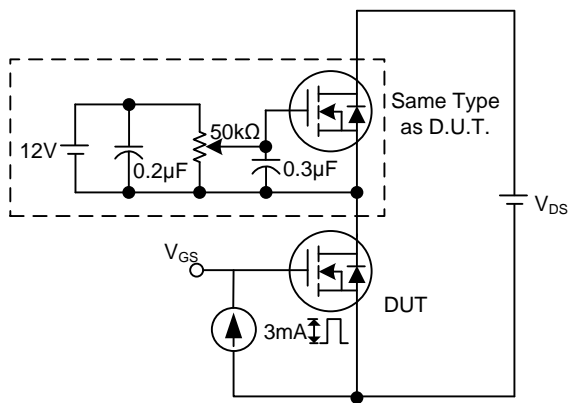
TEST CIRCUITS AND WAVEFORMS



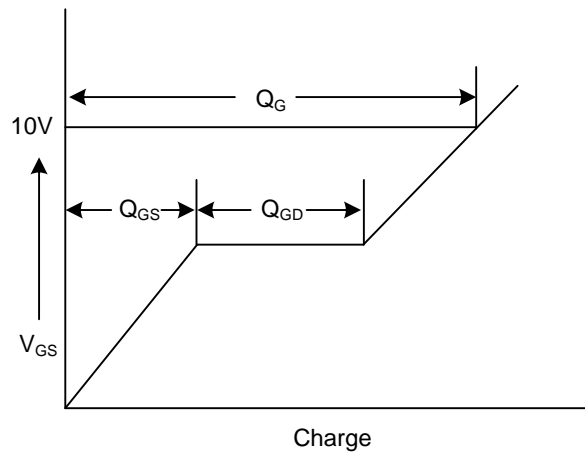
Switching Test Circuit



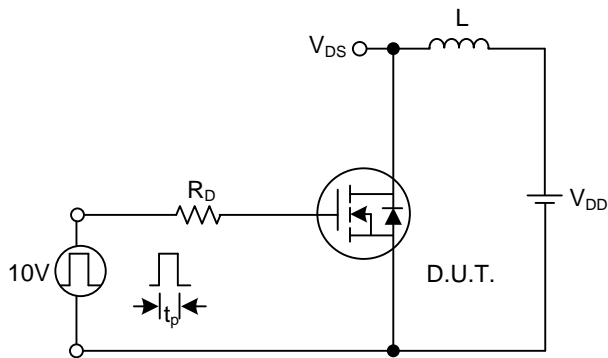
Switching Waveforms



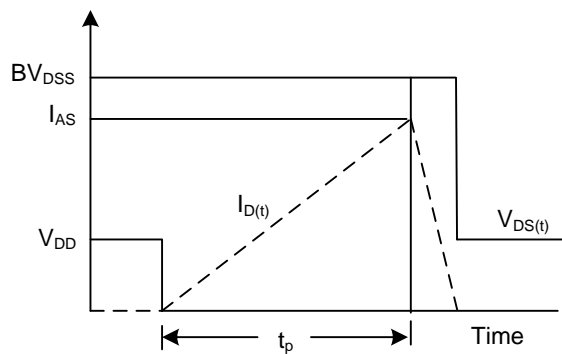
Gate Charge Test Circuit



Gate Charge Waveform

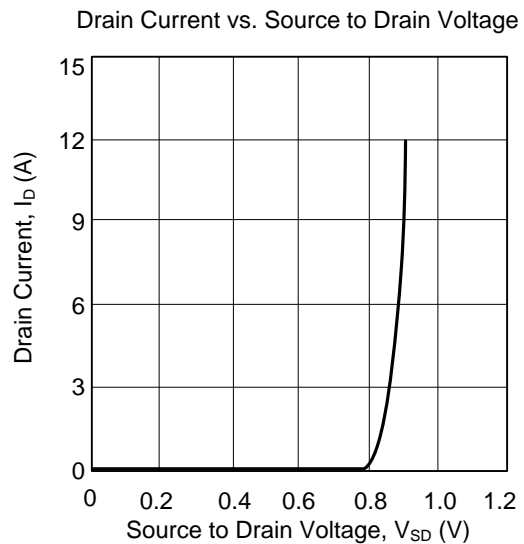
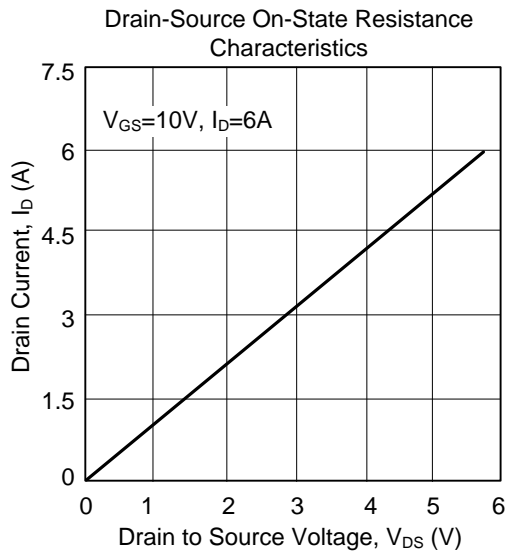
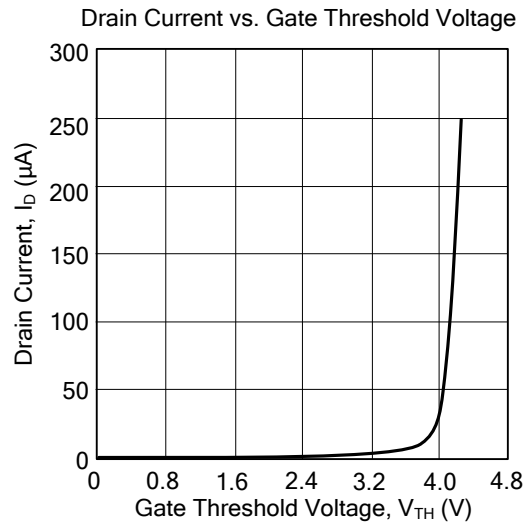
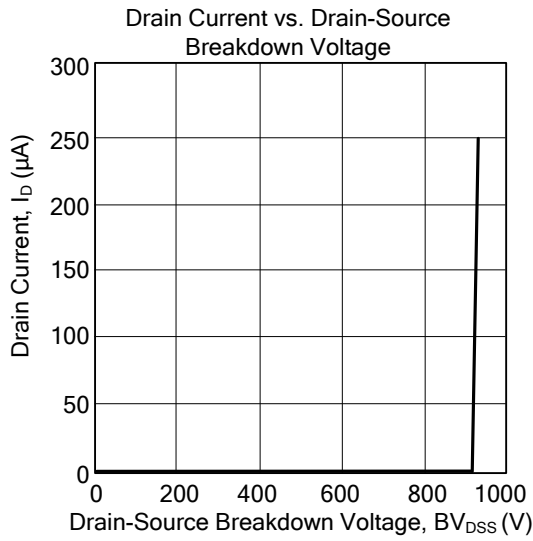


Unclamped Inductive Switching Test Circuit



Unclamped Inductive Switching Waveforms

■ TYPICAL CHARACTERISTICS



UTC assumes no responsibility for equipment failures that result from using products at values that exceed, even momentarily, rated values (such as maximum ratings, operating condition ranges, or other parameters) listed in products specifications of any and all UTC products described or contained herein. UTC products are not designed for use in life support appliances, devices or systems where malfunction of these products can be reasonably expected to result in personal injury. Reproduction in whole or in part is prohibited without the prior written consent of the copyright owner. UTC reserves the right to make changes to information published in this document, including without limitation specifications and product descriptions, at any time and without notice. This document supersedes and replaces all information supplied prior to the publication hereof.