

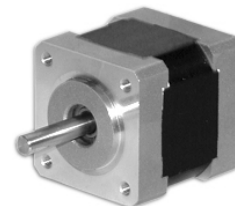
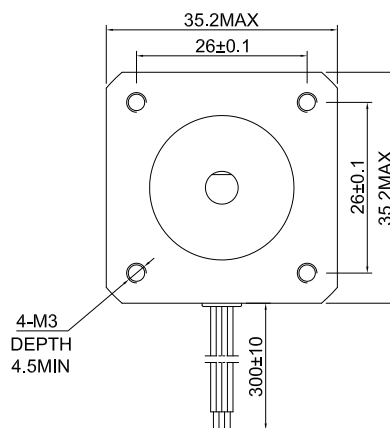
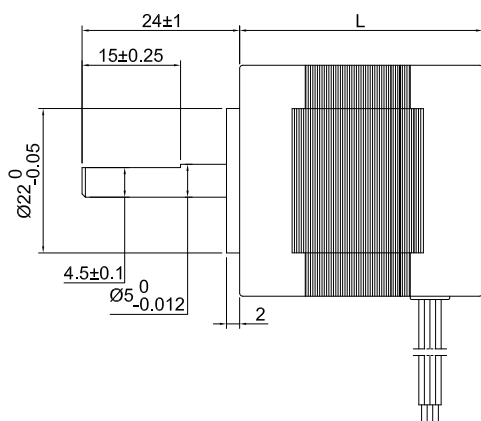
□ 35.2mm (□ 1.38in.)

Step Angle 1.8° 14HS High-Torque Type

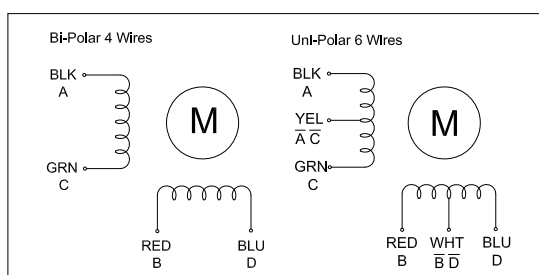
Common Rating

Item	Specification
Step Angle Accuracy	±5% (full step, no load)
Temperature Rise	80°C Max. (rated current, 2 phase on)
Ambient Temperature	-10°C ~ +50°C
Insulation Resistance	100MΩ Min. 500VDC
Dielectric Strength	500VAC for one minute

Dimension Unit = mm(in.)



Wiring Diagram



Excitation Sequence

Excitation: 2-2					Excitation: 2-1-2				
STEP	A	B	C	D	STEP	A	B	C	D
1	+	+			1	+			
2		+	+		2	+	+		
3			+	+	3	+			
4	+			+	4		+	+	
					5			+	
					6			+	+
					7				+
					8	+			+

Specifications

Model	Torque		Voltage	Current	Resistance	Inductance	Inertia	Bi/Unipolar	Weight	Length "L"	
	Ncm	oz.in	V/Phase	A/Phase	Ohm/Phase	mH/Phase	g.cm ²	# of Leads	Kg	mm	in
14HS08-0304S	4	5.7	7.5	0.3	25	20	7	Bi (4)	0.09	20	0.79
14HS08-0504S	4	5.7	4.5	0.5	9	5	7	Bi (4)	0.09	20	0.79
14HS10-0284S	6.5	9.2	7.4	0.28	26	19.2	10	Bi (4)	0.12	26	1.02
14HS10-1504S	10	14.2	2.4	1.5	1.6	1.3	10	Bi (4)	0.12	26	1.02
14HS10-0404S	14	19.8	12	0.4	30	30	10	Bi (4)	0.12	26	1.02
14HS11-0256S	7	9.9	12	0.25	48	25	11	Uni (6)	0.12	28	1.10
14HS11-0504S	10	14.2	10	0.5	20	15	11	Bi (4)	0.12	28	1.10
14HS11-1004S	12.5	17.7	3.5	1	3.5	3.5	11	Bi (4)	0.12	28	1.10
14HS13-0406S	10	14.2	10	0.4	25	17	14	Uni (6)	0.17	34	1.34
14HS13-0654S	14	19.8	4.42	0.65	6.8	10	14	Bi (4)	0.17	34	1.34
14HS13-0804S	18	25.5	5.4	0.8	6.8	10	14	Bi (4)	0.17	34	1.34
14HS14-1004S	14	19.8	2.7	1	2.7	4.3	14	Bi (4)	0.17	36	1.42
14HS16-1004S	18.5	26.2	4.3	1	4.3	5.5	14	Bi (4)	0.19	41	1.61
14HS17-0504S	23	32.6	7.5	0.5	15	26	18	Bi (4)	0.2	42	1.65
14HS20-1504S	40	56.6	4.2	1.5	2.8	3.8	54	Bi (4)	0.35	52	2.05

* Specify -S for Single Shaft; -D for Double Shaft * All motor's specifications are based on full-step constant current operation