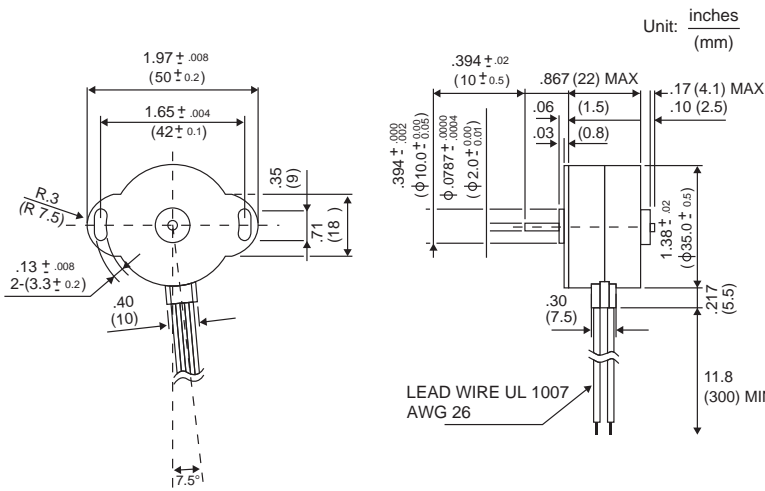
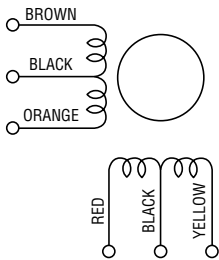


# 15BA-H 15° PERMANENT MAGNET

# 15BA-H 15° PERMANENT MAGNET



## WINDING DIAGRAM



## GENERAL SPECIFICATIONS

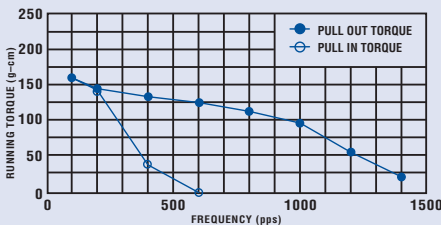
Step Angle .....	15°
Step Angle Accuracy .....	+/-1°
Temperature Rise .....	80° C Max.
Ambient Temperature Range .....	-10° to +50° C
Insulation Resistance .....	100MΩ Min., 500 VDC
Dielectric Strength .....	500 VAC for 1 min.
Radial Play .....	0.03 mm Max. (100 g-load)
End Play .....	0.3 mm Max. (100 g-load)
Switching Sequence .....	See page 31

## MODEL SPECIFICATIONS

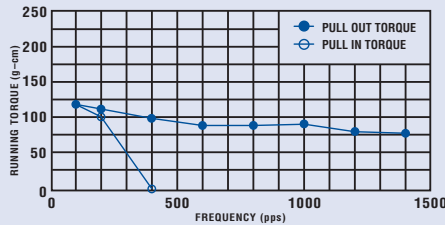
Model Number	Rated Voltage V	Rated Current/ Phase A	Winding Resistance/ Phase Ω	Holding Torque g-cm	Inductance mH	Rotor Inertia g-cm <sup>2</sup>	Detent Torque g-cm	Weight g
<b>Unipolar</b>								
15BA-H051P	8.0	0.23	35.0	165	18.0	4.0	40	100
15BA-H073P	4.0	0.40	10.0	155	5.0	4.0	40	100
<b>Bipolar</b>								
15BA-H043P	2.0	0.80	2.5	220	3.4	4.0	40	100

## TORQUE/SPEED CHARACTERISTICS

**Model: 15BA-H051P**  
Driver: Unipolar Dual  
Supply Voltage: 24.0 (Volt)  
Drive Current: 0.23 (A/PH)



**Model: 15BA-H073P**  
Driver: Unipolar Dual  
Supply Voltage: 24.0 (Volt)  
Drive Current: 0.40 (A/PH)



**Model: 15BA-H043P**  
Driver: Bipolar Dual  
Supply Voltage: 24.0 (Volt)  
Drive Current: 0.80 (A/PH)

