



15NM70-U2

Power MOSFET

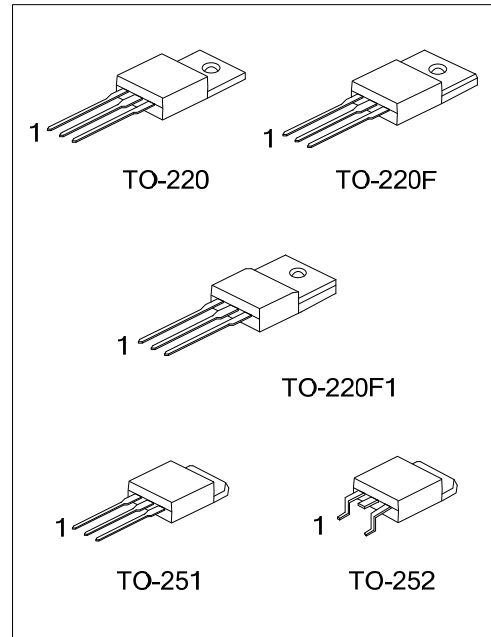
15A, 700V N-CHANNEL SUPER-JUNCTION MOSFET

■ DESCRIPTION

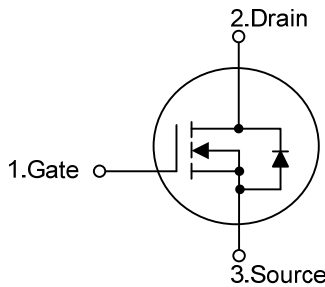
The **UTC 15NM70-U2** is a Super Junction MOSFET Structure and is designed to have better characteristics, such as fast switching time, low gate charge, low on-state resistance and a high rugged avalanche characteristics. This power MOSFET is usually used at DC-DC, AC-DC converters for power applications.

■ FEATURES

- * $R_{DS(ON)} < 0.45\Omega @ V_{GS}=10V, I_D=7.5A$
- * By using Super Junction Structure
- * Fast Switching
- * With 100% Avalanche Tested



■ SYMBOL



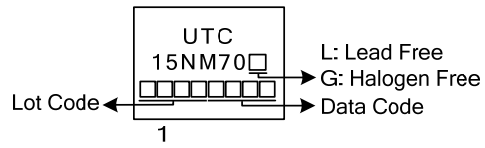
■ ORDERING INFORMATION

Ordering Number		Package	Pin Assignment			Packing
Lead Free	Halogen Free		1	2	3	
15NM70L-TA3-T	15NM70G-TA3-T	TO-220	G	D	S	Tube
15NM70L-TF3-T	15NM70G-TF3-T	TO-220F	G	D	S	Tube
15NM70L-TF1-T	15NM70G-TF1-T	TO-220F1	G	D	S	Tube
15NM70L-TM3-T	15NM70G-TM3-T	TO-251	G	D	S	Tube
15NM70L-TN3-R	15NM70G-TN3-R	TO-252	G	D	S	Tape Reel

Note: Pin Assignment: G: Gate D: Drain S: Source

<p>15NM70L-TF1-T</p> <p>(1)Packing Type</p> <p>(2)Package Type</p> <p>(3)Green Package</p>	<p>(1) T: Tube, R: Tape Reel</p> <p>(2) TA3: TO-220, TF3: TO-220F, TF1: TO-220F1, TM3: TO-251, TN3: TO-252</p> <p>(3) L: Lead Free, G: Halogen Free and Lead Free</p>
--	---

■ MARKING



■ ABSOLUTE MAXIMUM RATINGS ($T_C=25^\circ\text{C}$, unless otherwise specified)

PARAMETER		SYMBOL	RATINGS	UNIT
Drain-Source Voltage		V_{DSS}	700	V
Gate-Source Voltage		V_{GSS}	± 30	V
Continuous Drain Current	Continuous	I_D	15	A
Pulsed Drain Current	Pulsed (Note 2)	I_{DM}	60	A
Avalanche Current (Note 3)		I_{AR}	2.9	A
Avalanche energy	Single Pulsed (Note 3)	E_{AS}	429	mJ
Peak Diode Recovery dv/dt (Note 4)		dv/dt	4.6	V/nS
Power Dissipation	TO-220	P_D	260	W
	TO-220F/TO-220F1		54	W
	TO-251/TO-252		90	W
Junction Temperature		T_J	+150	$^\circ\text{C}$
Storage Temperature Range		T_{STG}	-55 ~ +150	$^\circ\text{C}$

Notes: 1. Absolute maximum ratings are those values beyond which the device could be permanently damaged.

Absolute maximum ratings are stress ratings only and functional device operation is not implied.

2. Repetitive Rating: Pulse width limited by maximum junction temperature.

3. $L=102\text{mH}$, $I_{AS}=2.9\text{A}$, $V_{DD}=50\text{V}$, $R_G=25\Omega$, Starting $T_J = 25^\circ\text{C}$.

4. $I_{SD} \leq 15\text{A}$, $di/dt \leq 200\text{A}/\mu\text{s}$, $V_{DD} \leq V_{(BR)DSS}$, $T_J = 25^\circ\text{C}$.

■ THERMAL DATA

PARAMETER		SYMBOL	RATINGS	UNIT
Junction to Ambient	TO-220/TO-220F TO-220F1	θ_{JA}	62.5	$^\circ\text{C}/\text{W}$
	TO-251/TO-252		110	$^\circ\text{C}/\text{W}$
	TO-220		0.48	$^\circ\text{C}/\text{W}$
Junction to Case	TO-220F/TO-220F1	θ_{JC}	2.31	$^\circ\text{C}/\text{W}$
	TO-251/TO-252		1.39	$^\circ\text{C}/\text{W}$

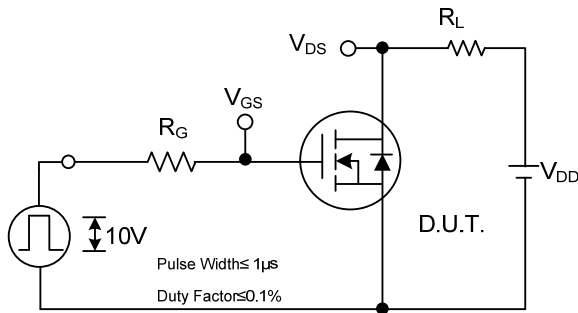
■ ELECTRICAL CHARACTERISTICS (T_J =25°C, unless otherwise specified)

PARAMETER	SYMBOL	TEST CONDITIONS	MIN	TYP	MAX	UNIT
OFF CHARACTERISTICS						
Drain-Source Breakdown Voltage	BV _{DSS}	V _{GS} =0V, I _D =250μA	700			V
Drain-Source Leakage Current	I _{DSS}	V _{DS} =700V, V _{GS} =0V			10	μA
Gate-Source Leakage Current	Forward	V _{DS} =0V, V _{GS} =+30V			+100	nA
	Reverse				V _{DS} =0V, V _{GS} =-30V	-100
ON CHARACTERISTICS						
Gate Threshold Voltage	V _{GS(TH)}	V _{DS} = V _{GS} , I _D =250μA	2.5		4.5	V
Drain-Source On-State Resistance	R _{DS(ON)}	V _{GS} =10V, I _D =7.5A			0.45	Ω
DYNAMIC PARAMETERS						
Input Capacitance	C _{ISS}	V _{GS} =0V, V _{DS} =25V, f=1.0MHz		1064		pF
Output Capacitance	C _{OSS}			543		pF
Reverse Transfer Capacitance	C _{RSS}			37		pF
SWITCHING PARAMETERS						
Total Gate Charge (Note 1)	Q _G	V _{DS} =50V, V _{GS} =10V, I _D =1.3A, I _G =100μA (Note 1, 2)		95		nC
Gate to Source Charge	Q _{GS}			7.8		nC
Gate to Drain Charge	Q _{GD}			26		nC
Turn-on Delay Time (Note 1)	t _{D(ON)}	V _{DD} =30V, V _{GS} =10V, I _D =0.5A, R _G =25Ω (Note 1, 2)		62		ns
Rise Time	t _R			132		ns
Turn-off Delay Time	t _{D(OFF)}			240		ns
Fall-Time	t _F			145		ns
SOURCE- DRAIN DIODE RATINGS AND CHARACTERISTICS						
Maximum Body-Diode Pulsed Current	I _S				15	A
Drain-Source Diode Forward Voltage (Note 1)	I _{SM}				60	A
Maximum Body-Diode Continuous Current	V _{SD}	I _S =15A, V _{GS} =0V			1.4	V
Reverse Recovery Time (Note 1)	t _{rr}	I _S =15A, V _{GS} =0V, dI _F /dt=100A/μs		395		ns
Reverse Recovery Charge	Q _{rr}				5.92	

Note: 1. Pulse Test : Pulse width ≤ 300μs, Duty cycle ≤ 2%

2. Essentially independent of operating temperature

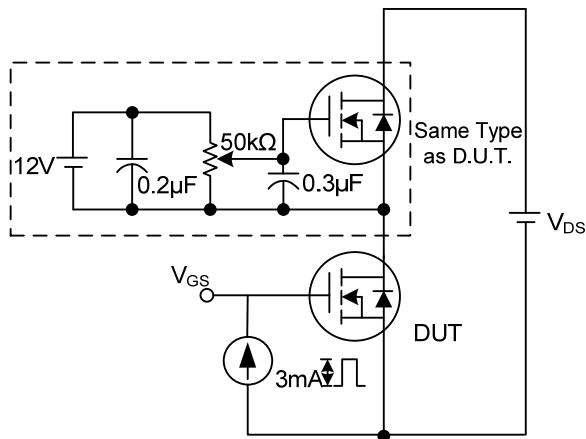
TEST CIRCUITS AND WAVEFORMS (Cont.)



Switching Test Circuit



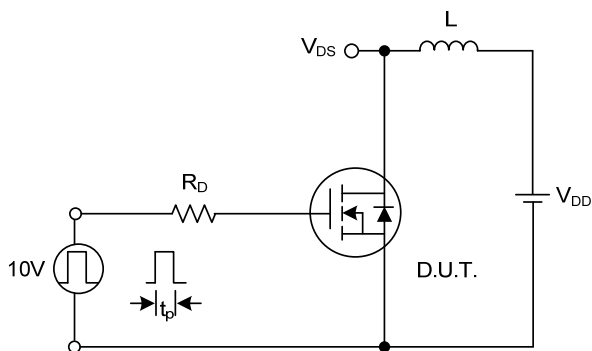
Switching Waveforms



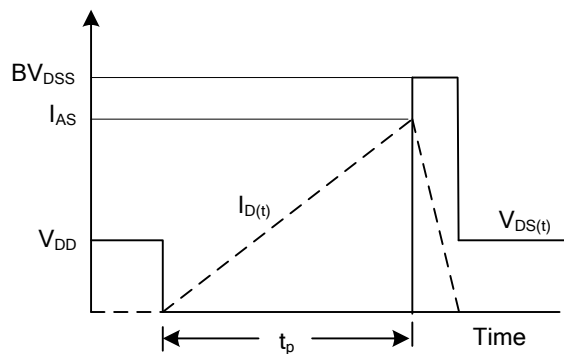
Gate Charge Test Circuit



Gate Charge Waveform



Unclamped Inductive Switching Test Circuit



Unclamped Inductive Switching Waveforms

UTC assumes no responsibility for equipment failures that result from using products at values that exceed, even momentarily, rated values (such as maximum ratings, operating condition ranges, or other parameters) listed in products specifications of any and all UTC products described or contained herein. UTC products are not designed for use in life support appliances, devices or systems where malfunction of these products can be reasonably expected to result in personal injury. Reproduction in whole or in part is prohibited without the prior written consent of the copyright owner. The information presented in this document does not form part of any quotation or contract, is believed to be accurate and reliable and may be changed without notice.