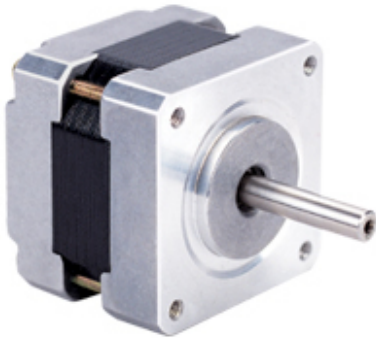
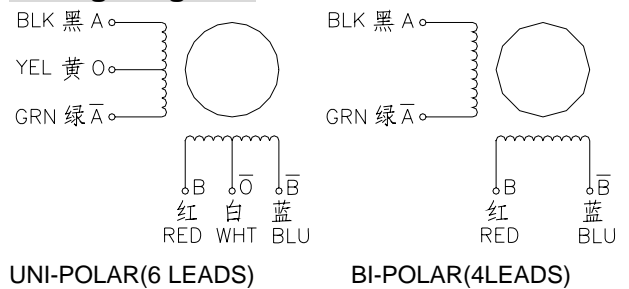


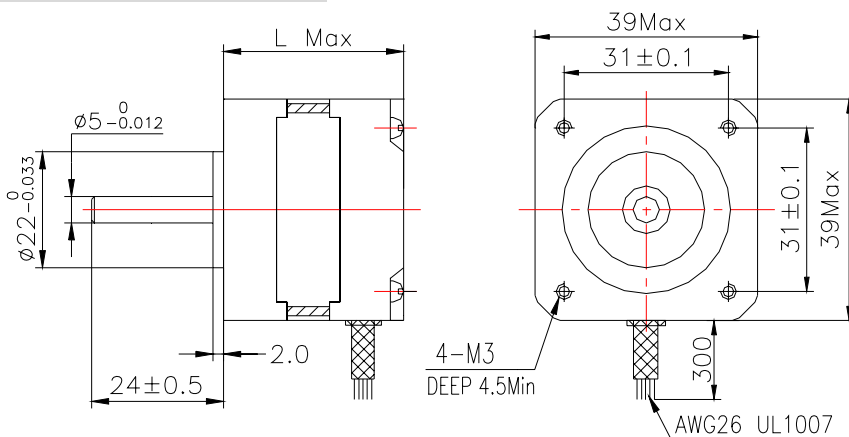
MotionKing (China) Motor Industry Co., Ltd.

# 2 Phase Hybrid Stepper Motor 16H2M series-Size 39mm(0.9 degree)


**Wiring Diagram:**

**Electrical Specifications:**

Series Model	Old P/N	Motor Length (mm)	Rated Current (A)	Phase Resistance (ohm)	Phase Inductance (mH)	Holding Torque (N.cm Min)	Detent Torque (N.cm Max)	Rotor Inertia (g.cm <sup>2</sup> )	Lead Wire (No.)	Motor Weight (g)
16H2M9404	16HM9401	22	0.42	20	16	8	0.5	15	4	100
16H2M2406	16HM2410	26	0.6	9	16	14	0.8	18	4	120
16H2M3406	16HM3401	34	0.6	9	15	16	1.1	23	4	160
16H2M3412	16HM3402	34	1.2	2.5	3.6	16	1.1	23	4	160
16H2M3604	16HM3630	34	0.4	30	16	12	1.1	23	6	160
16H2M4406	16HM4401	40	0.6	12	20	22	1.4	30	4	210
16H2M4412	16HM4402	40	1.2	3.2	5.5	22	1.4	30	4	210
16H2M4604	16HM4630	40	0.4	30	26	18	1.4	30	6	210

\*Note: We can manufacture products according to customer's requirements.

**Dimensions: unit=mm**

**Motor Length:**

Model	Length
16H2M0XXX	20 mm
16H2M9XXX	22 mm
16H2M3XXX	26 mm
16H2M4XXX	34 mm
16H2M4XXX	40 mm