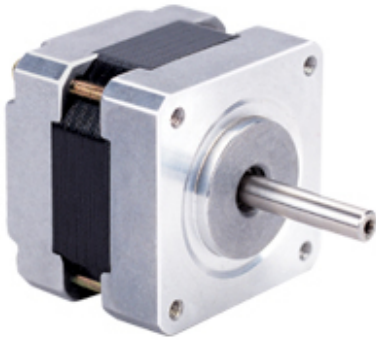
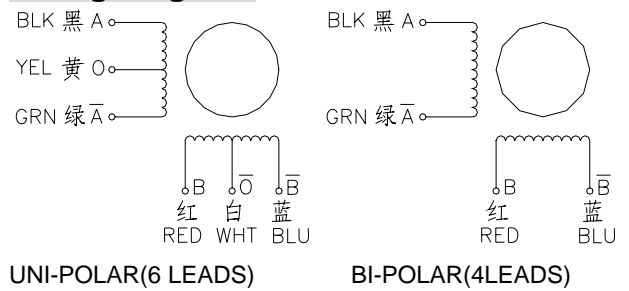
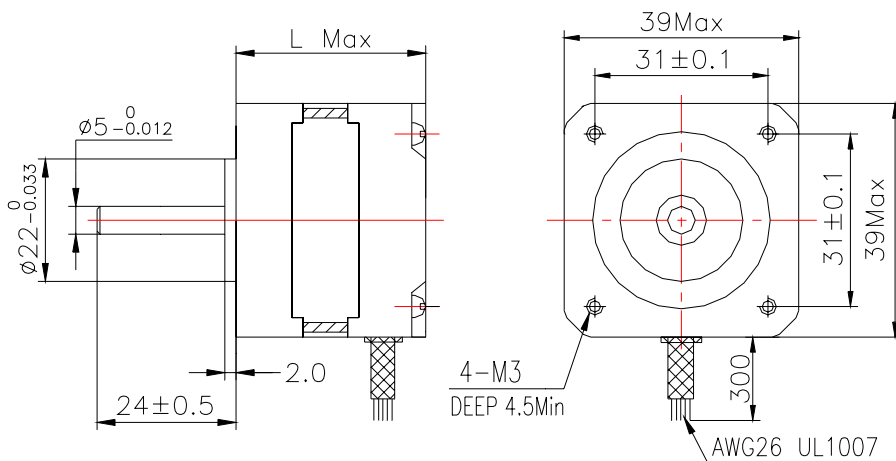


2 Phase Hybrid Stepper Motor 16HM series-Size 39mm(0.9 degree)


Wiring Diagram:

Electrical Specifications:

Series Model	Step Angle (deg)	Motor Length (mm)	Rated Current (A)	Phase Resistance (ohm)	Phase Inductance (mH)	Holding Torque (N.cm Min)	Detent Torque (N.cm Max)	Rotor Inertia (g.cm ²)	Lead Wire (No.)	Motor Weight (g)
16HM0401	0.9	20	0.42	20	16	8	0.5	15	4	100
16HM2410	0.9	26	0.6	9	16	14	0.8	18	4	120
16HM3401	0.9	34	0.6	9	15	16	1.1	23	4	160
16HM3402	0.9	34	1.2	2.5	3.6	16	1.1	23	4	160
16HM3630	0.9	34	0.4	30	16	12	1.1	23	6	160
16HM4401	0.9	40	0.6	12	20	22	1.4	30	4	210
16HM4402	0.9	40	1.2	3.2	5.5	22	1.4	30	4	210
16HM4630	0.9	40	0.4	30	26	18	1.4	30	6	210

*Note: We can manufacture products according to customer's requirements.

Dimensions: unit=mm
Motor Length:


Model	Length
16HM0XXX	20 mm
16HM2XXX	26 mm
16HM3XXX	34 mm
16HM4XXX	40 mm