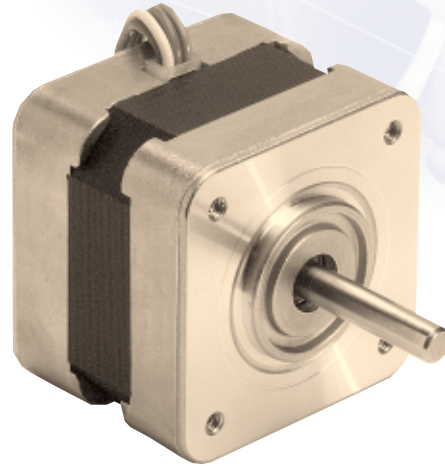
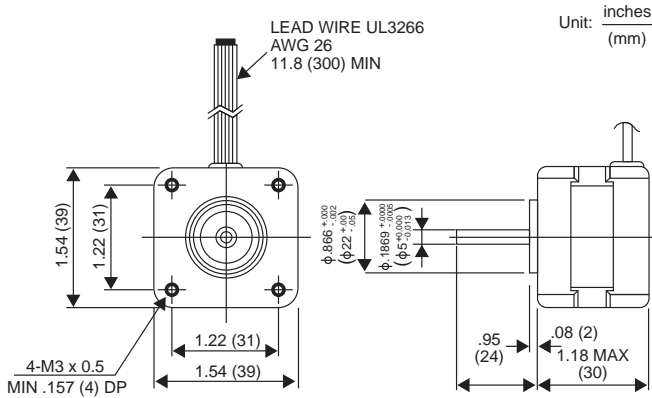
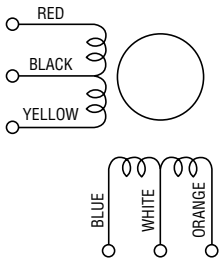


16PU-M 3.75° HYBRID

16PU-M 3.75° HYBRID



WINDING DIAGRAM



GENERAL SPECIFICATIONS

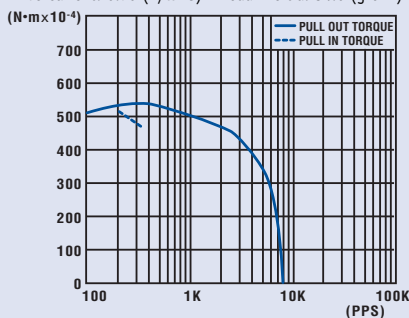
- Step Angle 3.75°
- Step Angle Accuracy +/-5%
- Temperature Rise..... 80° C Max.
- Ambient Temperature Range -20° to +50° C
- Insulation Resistance..... 100MΩ Min., 500 VDC
- Dielectric Strength..... 500 VAC for 1 min.
- Radial Play..... 0.02 mm Max. (450 g-load)
- End Play..... 0.08 mm Max. (450 g-load)
- Switching Sequence..... See page 31

MODEL SPECIFICATIONS

Model Number	Rated Voltage V	Rated Current/Phase A	Winding Resistance/Phase Ω	Holding Torque g-cm	Inductance mH	Rotor Inertia g-cm ²	Detent Torque g-cm	Weight g
16PU-M003	4.20	0.70	6.0	700	4.0	17.0	110	175
16PU-M006	7.60	0.40	19.5	700	10.5	17.0	110	175

TORQUE/SPEED CHARACTERISTICS

Model: 16PU-M003
 Driver: Unipolar Chopper Dual • Supply Voltage: 24.0 (Volt)
 Drive Current: 0.70 (A/WDG) • Load Inertia: 34.0 (g-cm²)



Model: 16PU-M006
 Driver: Unipolar Chopper Dual • Supply Voltage: 24.0 (Volt)
 Drive Current: 0.40 (A/WDG) • Load Inertia: 34.0 (g-cm²)

