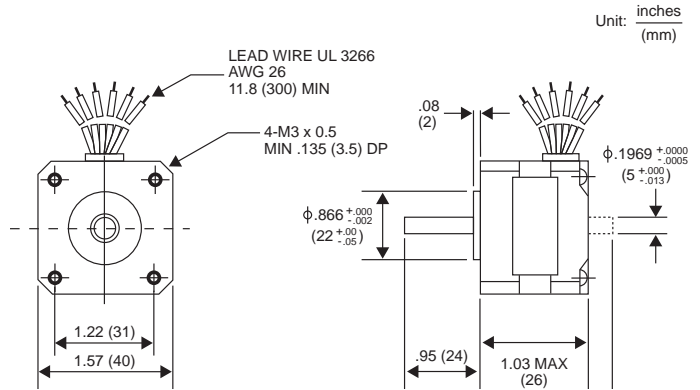
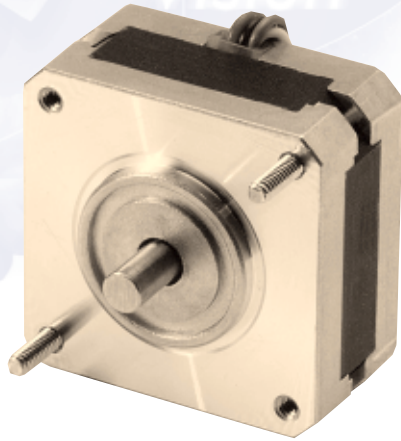


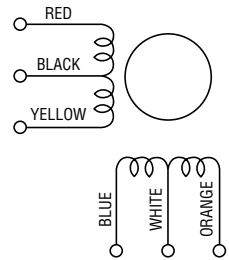
16PY-Q 0.9° HYBRID



GENERAL SPECIFICATIONS

Step Angle	0.9°
Step Angle Accuracy	+/-5%
Temperature Rise	80° C Max.
Ambient Temperature Range	-20° to +50° C
Insulation Resistance	100MΩ Min., 500 VDC
Dielectric Strength	500 VAC for 1 min.
Radial Play	0.02 mm Max. (450 g-load)
End Play	0.08 mm Max. (450 g-load)
Switching Sequence	See page 31

WINDING DIAGRAM



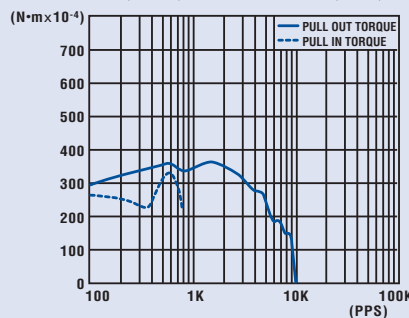
MODEL SPECIFICATIONS

Model Number	Rated Voltage V	Rated Current/ Phase A	Winding Resistance/ Phase Ω	Holding Torque g-cm	Inductance mH	Rotor Inertia g-cm ²	Detent Torque g-cm	Weight g
16PY-Q207	10.00	0.25	40.00	380	8.5	13.0	30	120
16PY-Q204	3.96	0.90	4.40	500	1.6	13.0	30	120

TORQUE/SPEED CHARACTERISTICS

Model: 16PY-Q207

Driver: Unipolar Chopper Dual • Supply Voltage: 24.0 (Volt)
Drive Current: 0.25 (A/WDG) • Load Inertia: 34.0 (g-cm²)



Model: 16PY-Q204

Driver: Unipolar Chopper Dual • Supply Voltage: 24.0 (Volt)
Drive Current: 0.90 (A/WDG) • Load Inertia: 34.0 (g-cm²)

