

**SCHOTTKY RECTIFIER
HIGH EFFICIENCY SERIES**

16 Amp. 30V

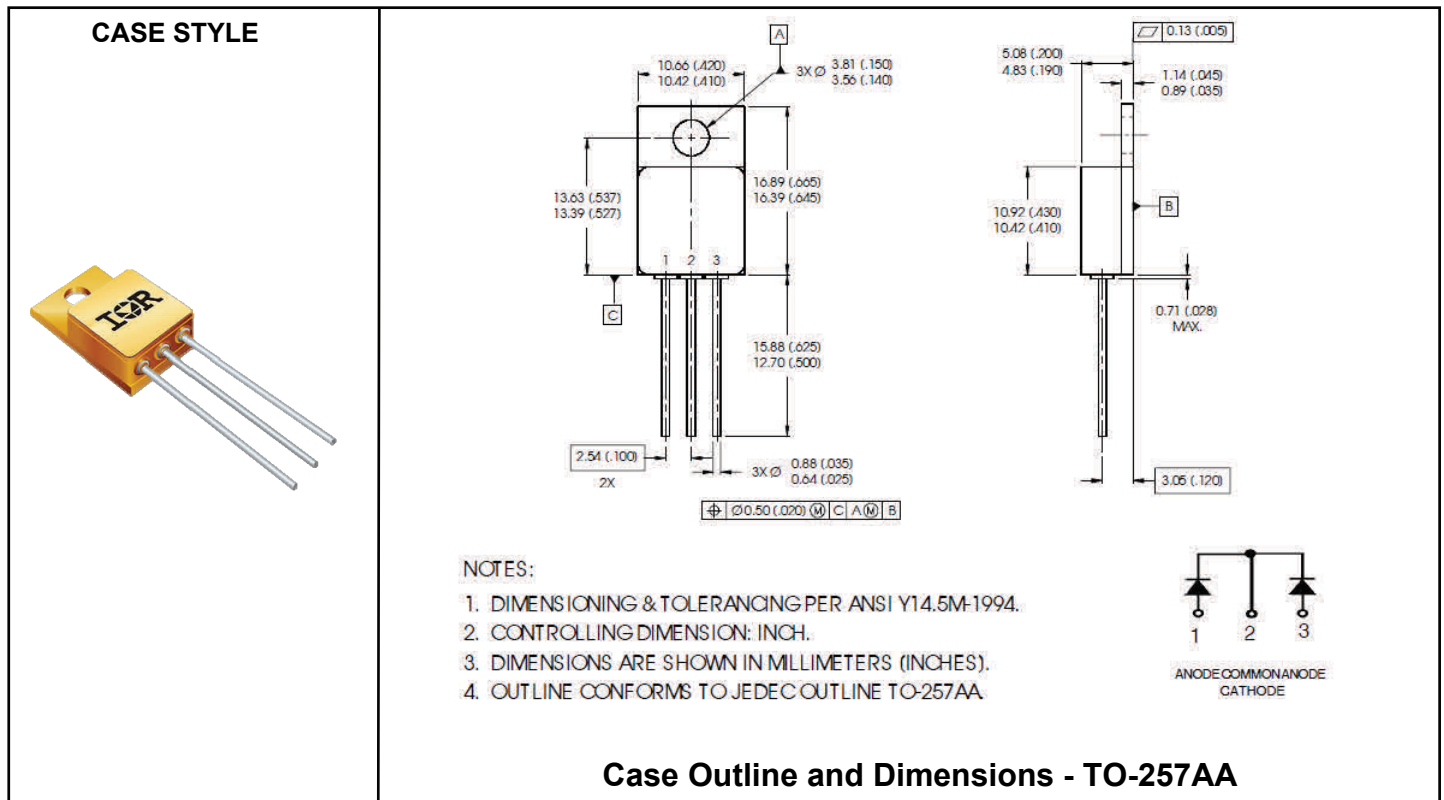
Major Ratings and Characteristics

Characteristics	16SCYQ045C	Units
$I_{F(AV)}$ (Per Leg)	16	A
V_{RRM} (Per Leg)	30	V
I_{FSM} @ $t_p = 8.3ms$ half-sine (Per Leg)	150	A
V_F @ $I_F = 16A_{pk}$, $T_J = 125^\circ C$ (Per Leg)	0.54	V
T_J, T_{STG} Operating and storage	-55 to 150	$^\circ C$

Description/Features

The 16SCYQ030C center tap Schottky rectifier has been expressly designed to meet the rigorous requirements of hirel environments. It is packaged in the hermetic isolated TO-257AA package. The device's forward voltage drop and reverse leakage current are optimized for the lowest power loss and the highest circuit efficiency for typical high frequency switching power supplies and resonant power converters. Full MIL-PRF-19500 quality conformance testing is available on source control drawings to TX, TXV and S quality levels.

- Hermetically Sealed
- Center Tap
- Ceramic Eyelets
- Low Forward Voltage Drop
- High Frequency Operation
- Guard Ring for Enhanced Ruggedness and Long term Reliability
- Lightweight



Voltage Ratings

Part Number	16SCYQ030C
V_R DC Reverse Voltage (V), maximum (Per Leg)	30
V_{RRM} Working Peak Reverse Voltage (V), maximum (Per Leg)	

Absolute Maximum Ratings

Parameter	Limits	Units	Conditions
$I_{F(AV)}$ Maximum Average Forward Current See Fig. 5 (Per Leg)	16	A	50% duty cycle @ $T_C = 134^\circ\text{C}$, square waveform
I_{FSM} Maximum Peak One Cycle Non - Repetitive Surge Current (Per Leg)	150	A	$t_p = 8.3$ ms half-sine

Electrical Specifications

Parameter	Limits	Units	Conditions		
V_{FM} Maximum Forward Voltage Drop (Per Leg) See Fig. 1 ^①	0.57	V	$I_F = 7.5\text{A}$	$T_J = -55^\circ\text{C}$	
	0.65	V	$I_F = 15\text{A}$		
	0.66	V	$I_F = 16\text{A}$		
		0.48	V	$I_F = 7.5\text{A}$	$T_J = 25^\circ\text{C}$
		0.58	V	$I_F = 15\text{A}$	
		0.60	V	$I_F = 16\text{A}$	
		0.365	V	$I_F = 7.5\text{A}$	
		0.52	V	$I_F = 15\text{A}$	$T_J = 125^\circ\text{C}$
		0.54	V	$I_F = 16\text{A}$	
I_{RM} Maximum Reverse Leakage Current (Per Leg) See Fig. 2 ^①	1.0	mA	$T_J = 25^\circ\text{C}$	$V_R = \text{rated } V_R$	
	117	mA	$T_J = 100^\circ\text{C}$		
	200	mA	$T_J = 125^\circ\text{C}$		
C_J Maximum Junction Capacitance (Per Leg)	1900	pF	$V_R = 5V_{DC}$ (1MHz, 25°C)		
L_S Typical Series Inductance (Per Leg)	6.9	nH	Measured from anode lead to cathode lead 6mm (0.025 in.) from package		

Thermal-Mechanical Specifications

Parameter	Limits	Units	Conditions
T_J Maximum Junction Temperature Range	-55 to 150	$^\circ\text{C}$	
T_{stg} Maximum Storage Temperature Range	-55 to 150	$^\circ\text{C}$	
R_{thJC} Maximum Thermal Resistance, Junction to Case (Per Leg)	1.6	$^\circ\text{C}/\text{W}$	DC operation See Fig. 4
R_{thJC} Maximum Thermal Resistance, Junction to Case (Per Package)	0.8	$^\circ\text{C}/\text{W}$	DC operation
W_t Weight, typical	4.3	g	
Die Size (Typical)	115X170	mils	
Case Style	T0-257AA		

^① Pulse Width < 300 μs , Duty Cycle < 2%.

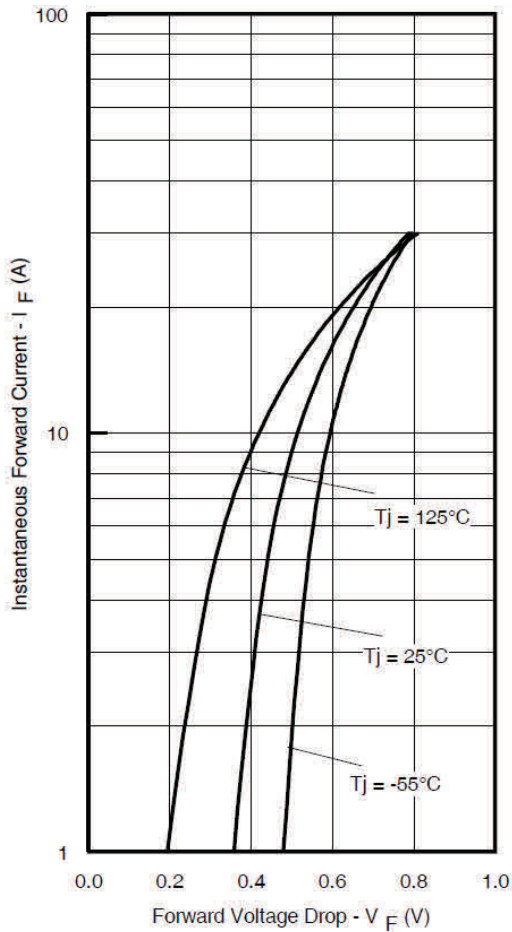


Fig 1. Max. Forward Voltage Drop Characteristics (Per Leg)

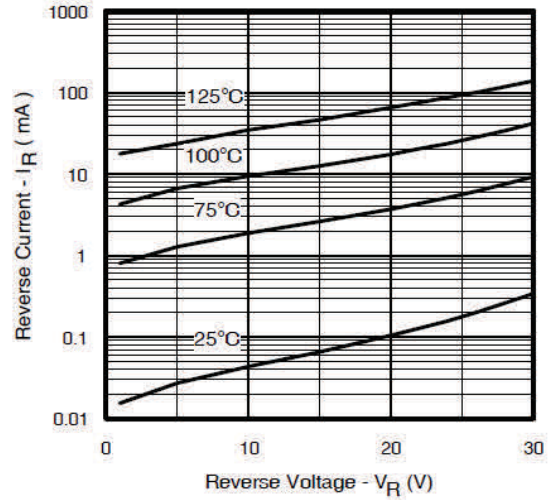


Fig 2. Typical Values of Reverse Current Vs. Reverse Voltage (Per Leg)

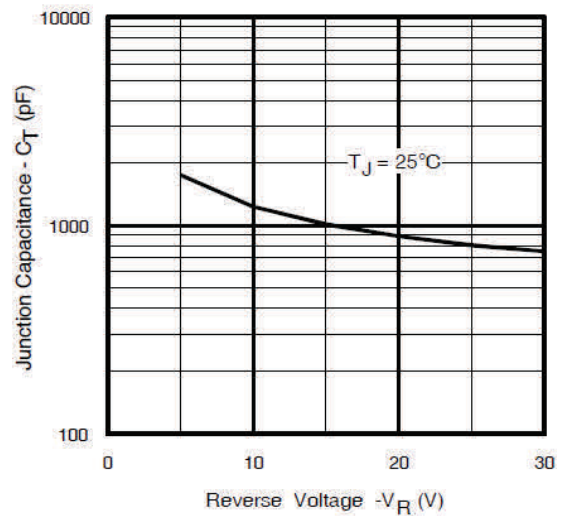


Fig 3. Typical Junction Capacitance Vs. Reverse Voltage (Per Leg)

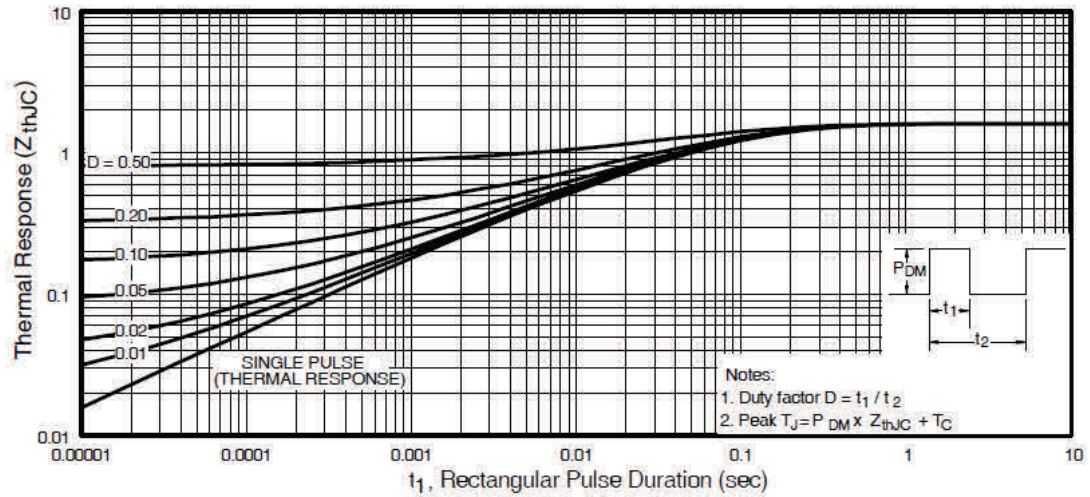


Fig 4. Max. Thermal Impedance Z_{thJC} Characteristics (Per Leg)

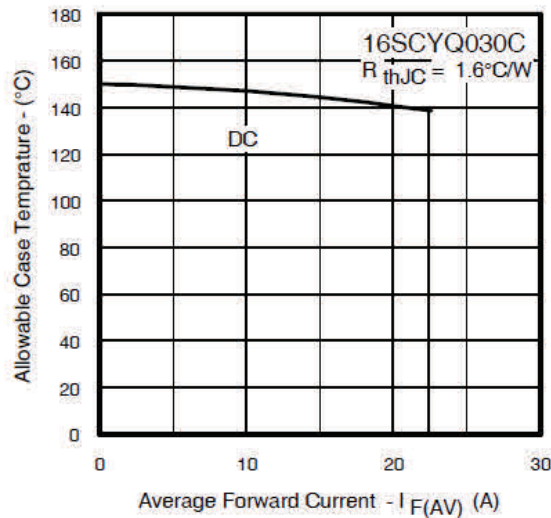


Fig 5. Max. Allowable Case Temperature Vs. Average Forward Current (Per Leg)

IMPORTANT NOTICE

The information given in this document shall be in no event regarded as guarantee of conditions or characteristic. The data contained herein is a characterization of the component based on internal standards and is intended to demonstrate and provide guidance for typical part performance. It will require further evaluation, qualification and analysis to determine suitability in the application environment to confirm compliance to your system requirements.

With respect to any example hints or any typical values stated herein and/or any information regarding the application of the product, Infineon Technologies hereby disclaims any and all warranties and liabilities of any kind including without limitation warranties on non- infringement of intellectual property rights and any third party.

In addition, any information given in this document is subject to customer's compliance with its obligations stated in this document and any applicable legal requirements, norms and standards concerning customer's product and any use of the product of Infineon Technologies in customer's applications.

The data contained in this document is exclusively intended for technically trained staff. It is the responsibility of any customer's technical departments to evaluate the suitability of the product for the intended applications and the completeness of the product information given in this document with respect to applications.

For further information on the product, technology, delivery terms and conditions and prices, please contact your local sales representative or go to (www.infineon.com/hirel).

WARNING

Due to technical requirements products may contain dangerous substances. For information on the types in question, please contact your nearest Infineon Technologies office.