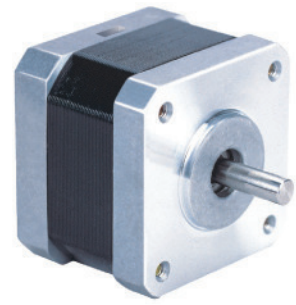


17HA SERIES 0.9°

Key Features

- High Accuracy
- Low Noise
- Smooth Movement



General Specifications

Bi-polar

Model Number	Resistance per Phase	Inductance per Phase	Rated Current	Holding Torque		Detent Torque		Rotor Inertia	
	ohm	mH	A	mNm	oz-in	mNm	oz-in	g.cm ²	oz-in ²
17HA0403-44N	8	11	0.43	90	12.75	8	1.13	20	0.11
17HA4401-05N	3.1	3.6	0.87	180	25.50	12	1.70	38	0.21
17HA4402-16N	20	23	0.5	220	31.16	12	1.70	38	0.21
17HA7402-06	6.6	7	0.65	70	9.92	5	0.71	15	0.08

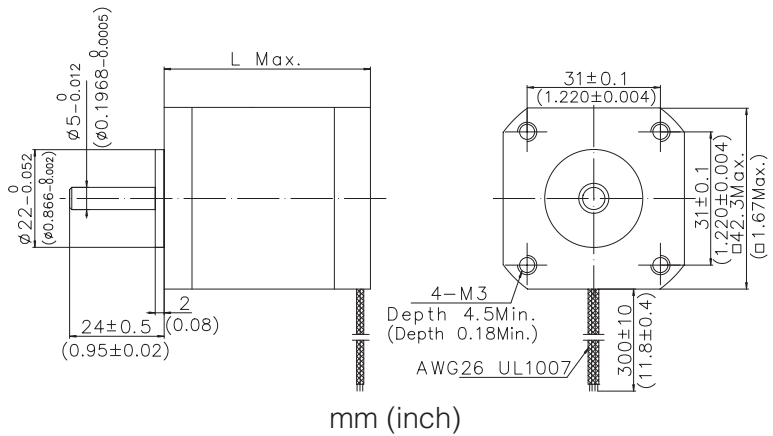
Uni-polar

Model Number	Resistance per Phase	Inductance per Phase	Rated Current	Holding Torque		Detent Torque		Rotor Inertia	
	ohm	mH	A	mNm	oz-in	mNm	oz-in	g.cm ²	oz-in ²
17HA0601N	8	4	0.43	50	7.08	8	1.13	20	0.11
17HA4605N	3.1	2.3	0.87	160	22.66	12	1.70	38	0.21
17HA4606N	20	13	0.5	200	28.33	12	1.70	38	0.21
17HA7602	6.6	2.9	0.65	30	4.25	5	0.71	15	0.08

Motor Wiring Diagram → Page A-8

Mechanical Dimension

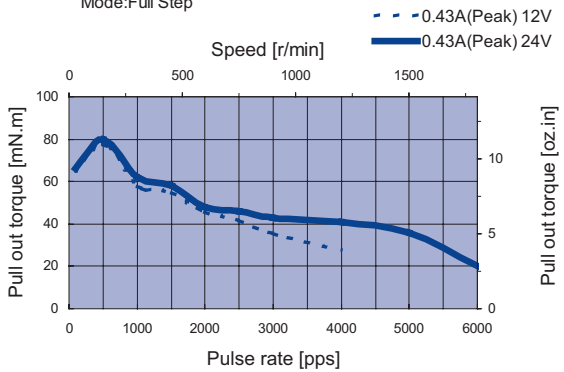
Model Number	L	Mass
	mm (in.)	kg (lb.)
17HA0**N	28 (1.10)	0.19 (0.42)
17HA4**N	34.3 (1.35)	0.23 (0.51)
17HA7**	20 (0.79)	0.12 (0.26)



Dynamic Torque Curves

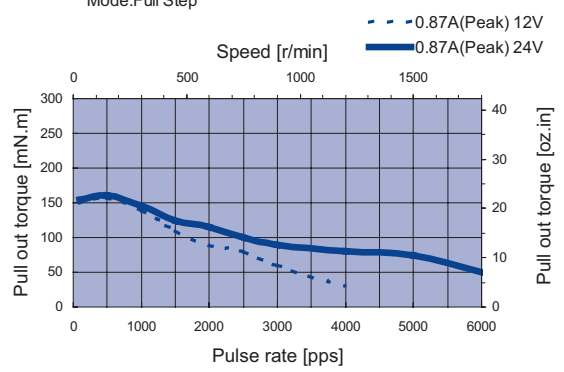
17HA0403-44N

Conditions: Bi-polar Constant Current Driver
IC: AMA MS3540M
Mode: Full Step



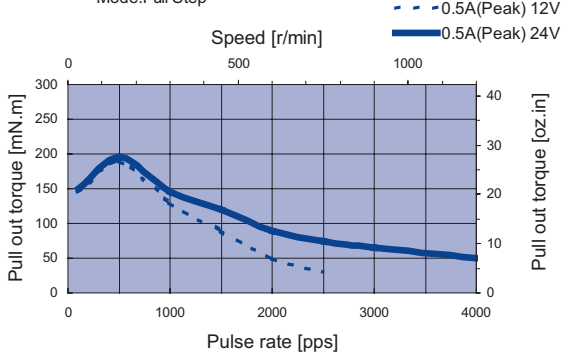
17HA4401-05N

Conditions: Bi-polar Constant Current Driver
IC: AMA MS3540M
Mode: Full Step



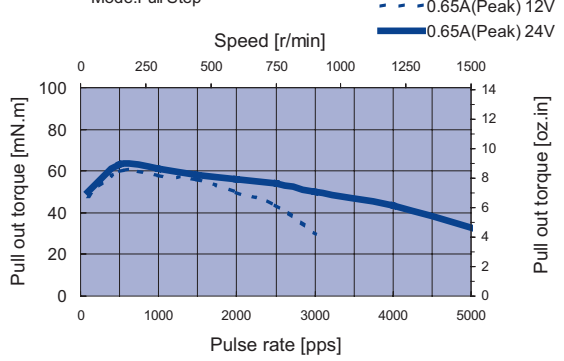
17HA4402-16N

Conditions: Bi-polar Constant Current Driver
IC: AMA MS3540M
Mode: Full Step



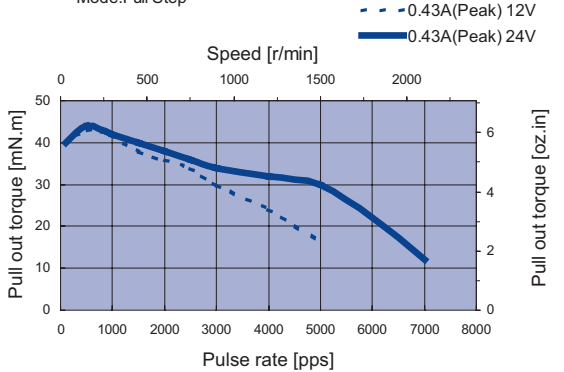
17HA7402-06

Conditions: Bi-polar Constant Current Driver
IC: AMA MS3540M
Mode: Full Step



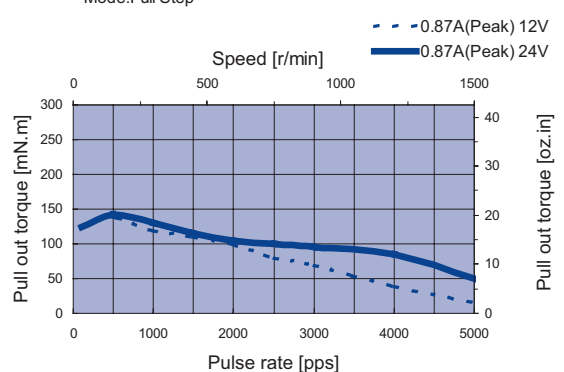
17HA0601N

Conditions: Uni-polar Constant Current Driver
IC: AMA MSU3040M
Mode: Full Step



17HA4605N

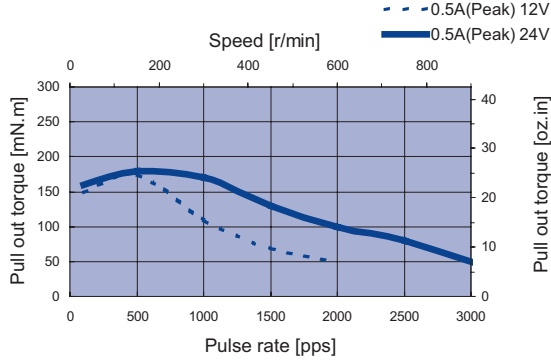
Conditions: Uni-polar Constant Current Driver
IC: AMA MSU3040M
Mode: Full Step



Dynamic Torque Curves

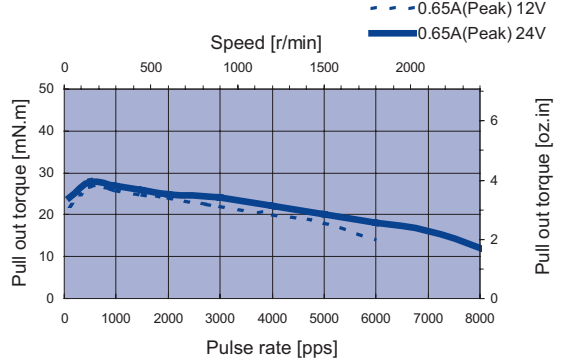
17HA4606N

Conditions: Uni-polar Constant Current Driver
 IC: AMA MSU3040M
 Mode: Full Step



17HA7602

Conditions: Uni-polar Constant Current Driver
 IC: AMA MSU3040M
 Mode: Full Step



0.39in.
(10mm)

1.10in.
(28mm)

1.38in.
(35mm)

1.53in.
(39mm)

1.65in.
(42mm)

2.22in.
(56.4mm)

2.25in.
(57.2mm)

2.36in.
(60mm)

3.35in.
(85mm)

3.39in.
(86mm)