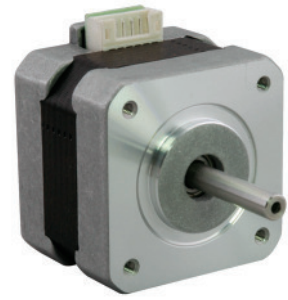


17HD SERIES 1.8°

Key Features

- High Torque
- Low Noise
- Small Size



General Specifications

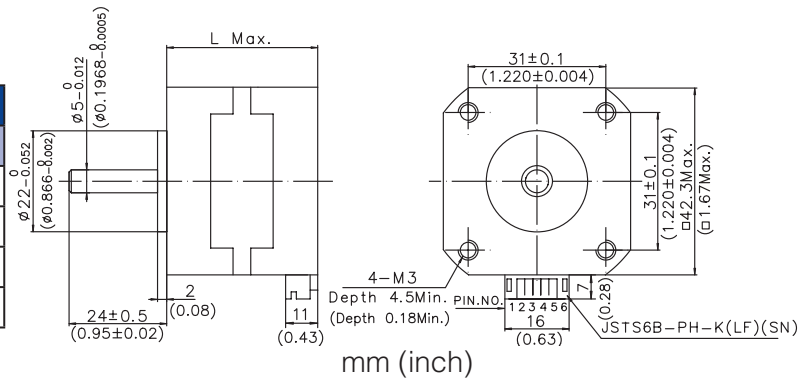
Bi-polar

Model Number	Resistance per Phase	Inductance per Phase	Rated Current	Holding Torque		Detent Torque		Rotor Inertia	
	ohm	mH	A	mNm	oz-in	mNm	oz-in	g.cm ²	oz-in ²
17HD0013	30	27	0.4	260	36.83	12	1.70	38	0.21
17HD1004-01	25	50	0.5	400	56.66	15	2.12	57	0.31
17HD3005-10	30	45	0.4	460	65.16	25	3.54	82	0.45
17HD5003-10	24	36	0.4	180	25.50	5	0.71	20	0.11

Motor Wiring Diagram → Page A-8

Mechanical Dimension

Model Number	L	Mass
	mm (in.)	kg (lb.)
17HD0**	33.3 (1.30)	0.21 (0.46)
17HD1**	39.3 (1.53)	0.28 (0.62)
17HD3**	47.3 (1.84)	0.36 (0.79)
17HD5**	25.3 (0.99)	0.15 (0.33)



□ 0.39in.
(□ 10mm)

□ 1.10in.
(□ 28mm)

□ 1.38in.
(□ 35mm)

□ 1.53in.
(□ 39mm)

□ 1.65in.
(□ 42mm)

□ 2.22in.
(□ 56.4mm)

Ø 2.25in.
(Ø 57.2mm)

□ 2.36in.
(□ 60mm)

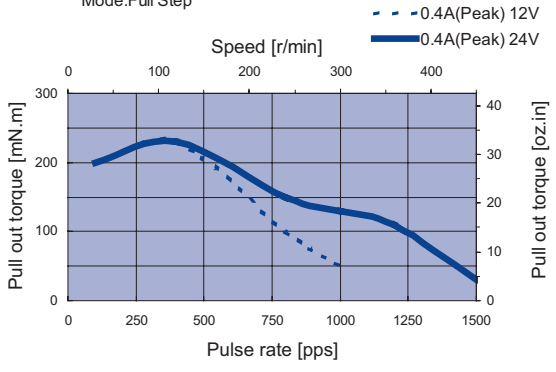
□ 3.35in.
(□ 85mm)

Ø 3.39in.
(Ø 86mm)

Dynamic Torque Curves

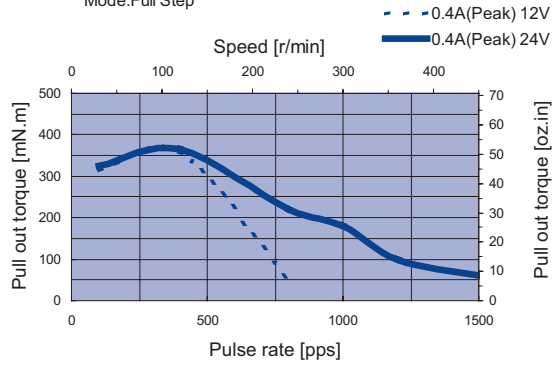
17HD0013

Conditions: Bi-polar Constant Current Driver
 IC: AMA MS3540M
 Mode: Full Step



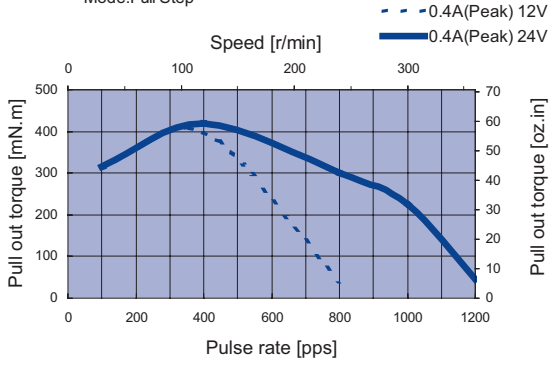
17HD1004-01

Conditions: Bi-polar Constant Current Driver
 IC: AMA MS3540M
 Mode: Full Step



17HD3005-10

Conditions: Bi-polar Constant Current Driver
 IC: AMA MS3540M
 Mode: Full Step



17HD5003-10

Conditions: Bi-polar Constant Current Driver
 IC: AMA MS3540M
 Mode: Full Step

