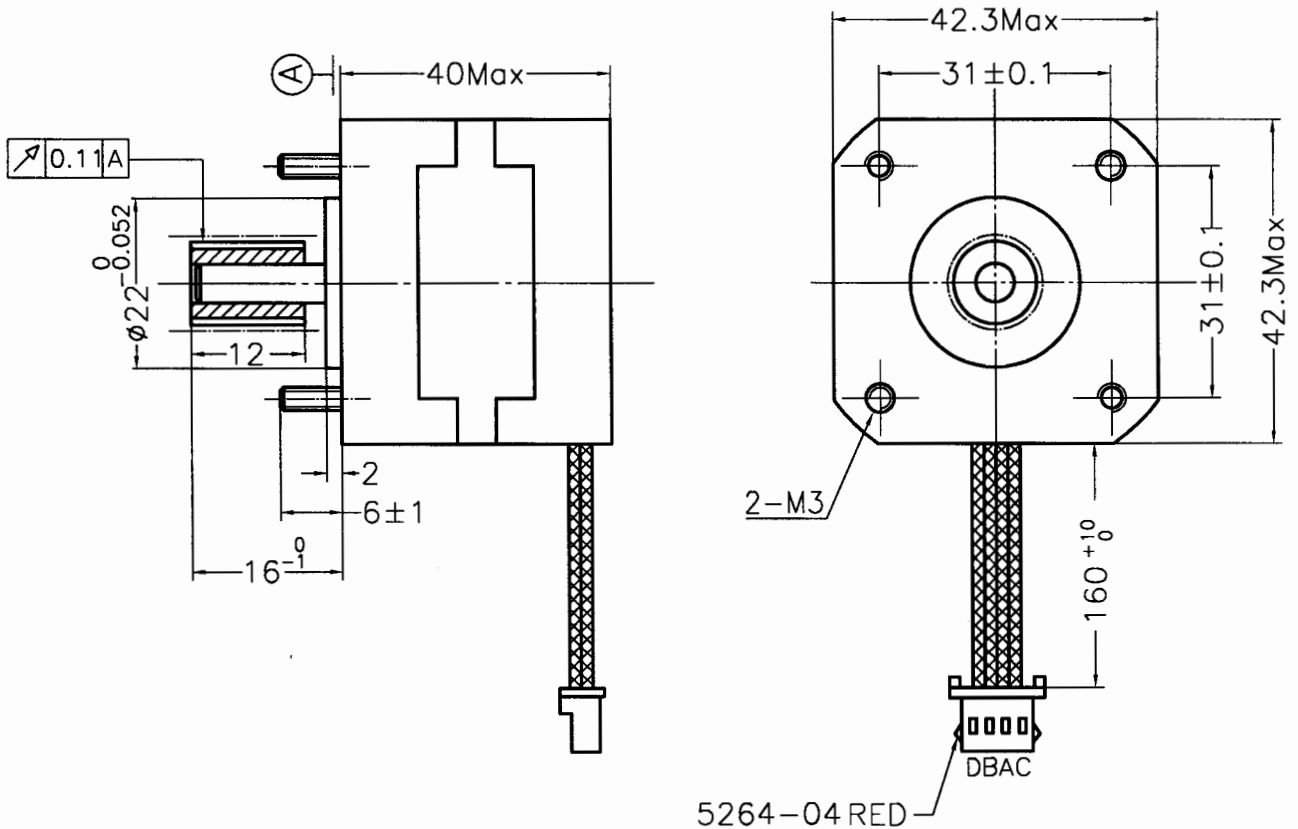


HYBRID STEPPING MOTOR TYPE 17HS1402-02P (473020X01)

General specifications		Electrical specifications		Wiring Diagram
Step Angle	1.8°±5%	Supply voltage	27 V	
Number of phase	2	Current	0.87 A	
Insulation resistance	100Mohm Min.(500V DC)	Inductance per phase	5±15% mH	
Insulation class	Class B	Resistance per phase	3.3±10% ohm	
Rotor inertia	57 g·cm ²	Holding torque	2.4 kg·cm	
Weight	0.24 kg			

Dimensions unit=mm



Detail of label:

STEPPING MOTOR
TYPE 17HS1402-02
P/N 473020X01
MSWO-XXXXX**MOONS'**

Gear Profile	MXL
Model	2.032
No of Teeth	15
Pitch Diameter	9.702
Outside Diameter	9.19

comment:

- 内包装标识: 17HS1402-02.
- 外包装标识: 17HS1402-02.

A					STANDARD	标准
					ARRPOVE	0001.5.14
REV.	NO.	MAK.	QTY.	CR.NO.	DESIGN	此号及 01.05.14