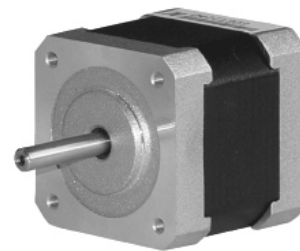


□ 42.3mm(□ 1.67in.)

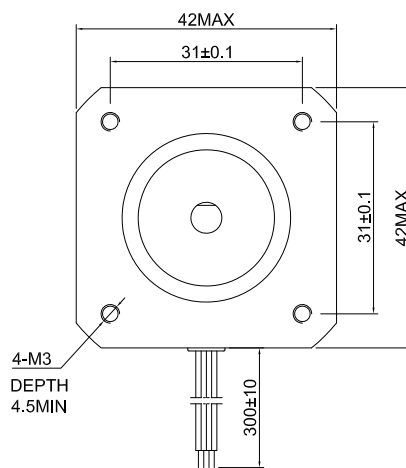
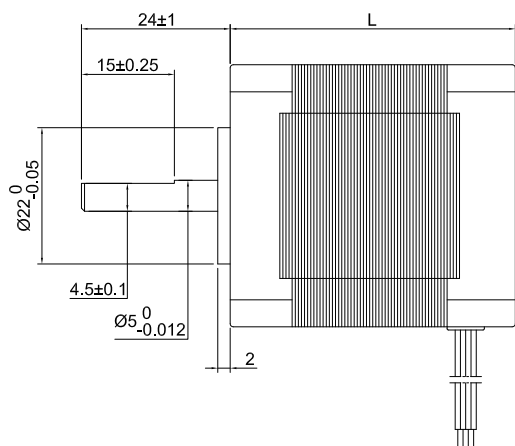
Step Angle 3.75° 17HT 3-Phase Type

Common Rating

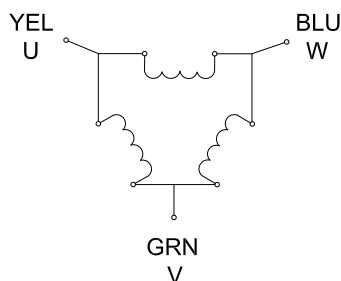
Item	Specification
Step Angle Accuracy	±5% (full step, no load)
Temperature Rise	80°C Max. (rated current, 2 phase on)
Ambient Temperature	-10°C~+50°C
Insulation Resistance	100MΩMin. 500VDC
Dielectric Strength	500VAC for one minute



Dimension Unit = mm(in.)



Wiring Diagram



Excitation Sequence

STEP	1	2	3	4	5	6
U	+		-	-		+
V	-	-		+	+	
W		+	+		-	-

Specifications

Model	Torque		Voltage	Current	Resistance	Inductance	Inertia	Weight	Bi/Unipolar	Length "L"	
	Ncm	oz.in	V/Phase	A/Phase	Ohm/Phase	mH/Phase	g.cm ²	Kg	# of Leads	mm	in
17HT08-0803S	5.4	7.6	5.28	0.8	6.6	4.8	15	0.14	Bi (3)	21	0.83
17HT08-0906S	7	9.9	5.3	0.9	5.9	2.6	15	0.15	Uni (6)	21	0.83
17HT15-1003S	16	22.7	2.1	1	2.1	2.8	54	0.3	Bi (3)	39	1.54
17HT15-0603S	20	28.3	6.4	0.6	10.7	26	54	0.3	Bi (3)	39	1.54

* Specify -S for Single Shaft; -D for Double Shaft * All motor's specifications are based on full-step constant current operation