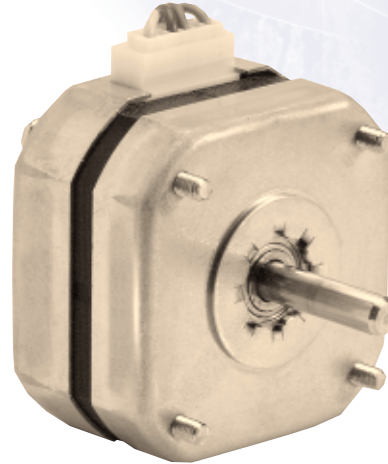
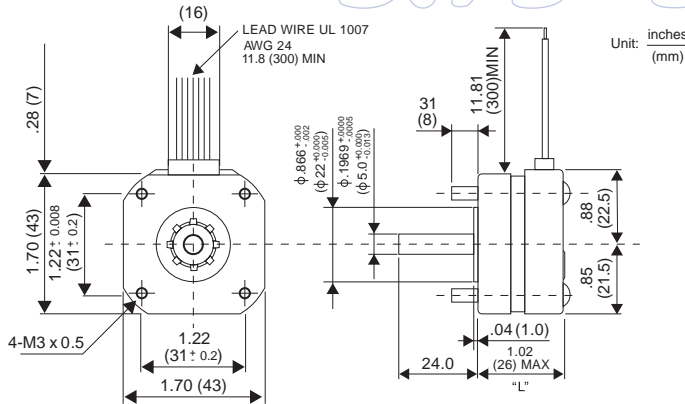


17PM-K 1.8° SMH HYBRID 17PU-H 3.75° SMH HYBRID

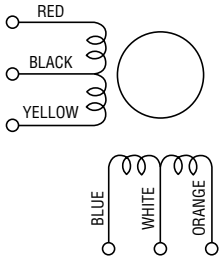
17PM-K 1.8° SMH HYBRID 17PU-H 3.75° SMH HYBRID



P/N	"L"
17PM-K2XX	1.02 (26)
17PM-K0XX	1.18 (30)
17PU-H2XX	1.02 (26)
17PU-H0XX	1.18 (30)

NOTE: Also available with winged mounting brackets.

WINDING DIAGRAM



GENERAL SPECIFICATIONS

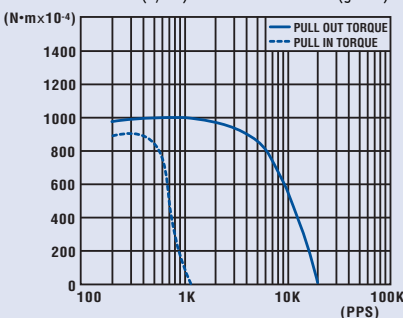
Step Angle Accuracy +/-5%
 Temperature Rise 80° C Max.
 Ambient Temperature Range -20° to +50° C
 Insulation Resistance 100MΩ Min., 500 VDC
 Dielectric Strength 500 VAC for 1 min.
 Radial Play 0.02 mm Max. (450 g-load)
 End Play 0.10 mm Max. (450 g-load)
 Switching Sequence See page 31

MODEL SPECIFICATIONS

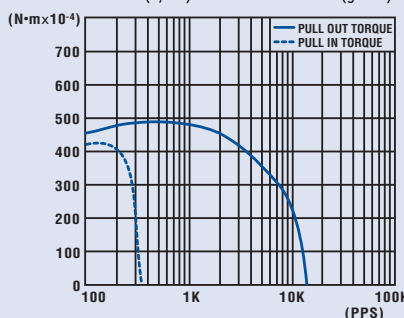
Model Number	Step Angle D	Rate Voltage V	Rated Current/Phase A	Winding Resistance/Phase Ω	Holding Torque g-cm	Inductance mH	Rotor Inertia g-cm ²	Detent Torque g-cm	Weight g
17PM-K204VT	1.8	2.40	0.8	3.0	1,250	2.6	28.0	60	180
17PM-K018VT	1.8	3.50	1.0	3.5	1,700	2.7	34.0	70	220
17PU-H204VT	3.75	2.40	0.8	3.0	750	2.1	28.0	120	180
17PU-H018VT	3.75	3.50	1.0	3.5	1,150	2.0	34.0	150	220

TORQUE/SPEED CHARACTERISTICS

Model: 17PM-K204VT
 Driver: Unipolar Chopper Dual • Supply Voltage: 24.0 (Volt)
 Drive Current: 0.80 (A/PH) • Load Inertia: 27.0 (g-cm²)



Model: 17PU-H204VT
 Driver: Unipolar Chopper Dual • Supply Voltage: 24.0 (Volt)
 Drive Current: 0.80 (A/PH) • Load Inertia: 27.0 (g-cm²)



Model: 17PU-H018VT
 Driver: Unipolar Chopper Dual • Supply Voltage: 24.0 (Volt)
 Drive Current: 1.00 (A/PH) • Load Inertia: 27.0 (g-cm²)

