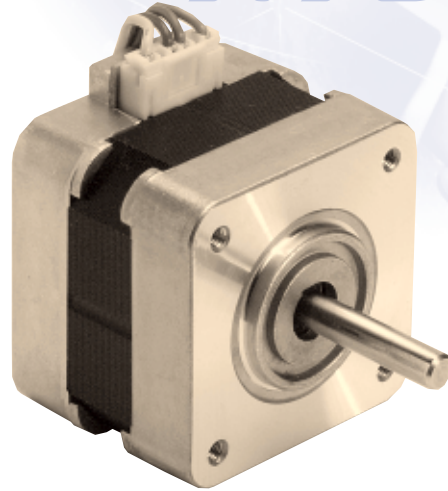
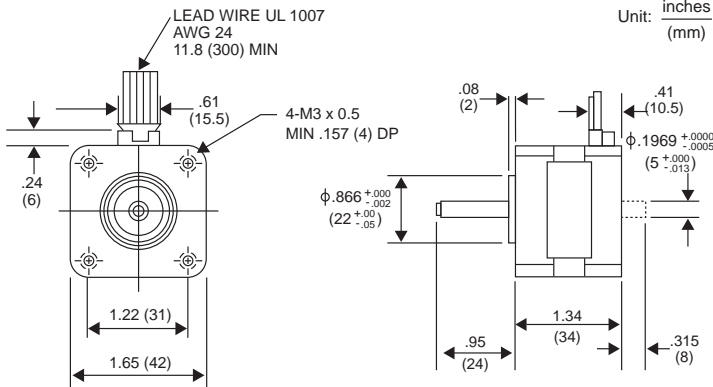
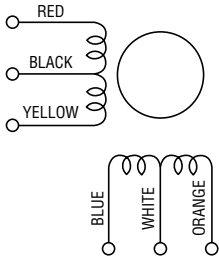


# 17PS-M 3.6° HYBRID

# 17PS-M 3.6° HYBRID



## WINDING DIAGRAM



## GENERAL SPECIFICATIONS

Step Angle .....	3.6°
Step Angle Accuracy .....	+/-5%
Temperature Rise .....	80° C Max.
Ambient Temperature Range .....	-20° to +50° C
Insulation Resistance .....	100M $\Omega$ Min., 500 VDC
Dielectric Strength .....	500 VAC for 1 min.
Radial Play .....	0.02 mm Max. (450 g-load)
End Play .....	0.08 mm Max. (450 g-load)
Switching Sequence .....	See page 31

## MODEL SPECIFICATIONS

Model Number	Rated Voltage V	Rated Current/ Phase A	Winding Resistance/ Phase $\Omega$	Holding Torque g-cm	Inductance mH	Rotor Inertia g-cm <sup>2</sup>	Detent Torque g-cm	Weight g
17PS-M001V	3.2	0.4	7.9	450	5.4	17.0	50	200

## TORQUE/SPEED CHARACTERISTICS

Model: 17PS-M001V  
Driver: Unipolar Chopper Dual • Supply Voltage: 24.0 (Volt)  
Drive Current: 0.40 (A/WDG) • Load Inertia: 34.0 (g-cm<sup>2</sup>)

