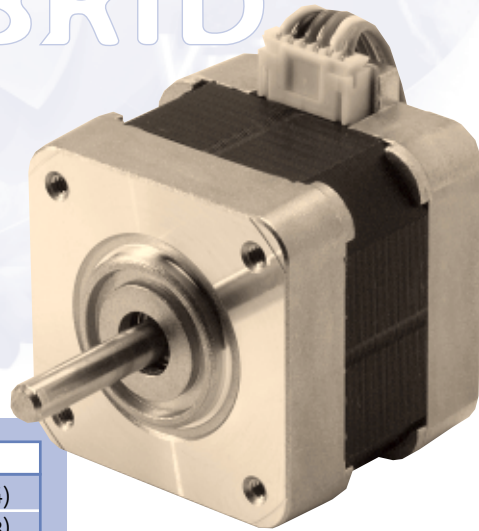
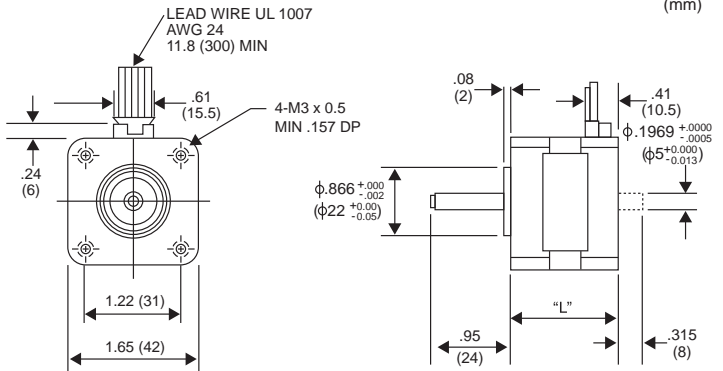


17PU-H 3.75° HYBRID



Unit: inches
(mm)

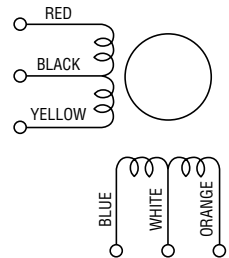


P/N	"L"
17PU-H0XX	1.34 (34)
17PU-H3XX	1.50 (38)

GENERAL SPECIFICATIONS

Step Angle 3.75°
 Step Angle Accuracy +/-5%
 Temperature Rise 80° C Max.
 Ambient Temperature Range -20° to +50° C
 Insulation Resistance 100MΩ Min., 500 VDC
 Dielectric Strength 500 VAC for 1 min.
 Radial Play 0.02 mm Max. (450 g-load)
 End Play 0.08 mm Max. (450 g-load)
 Switching Sequence See page 31

WINDING DIAGRAM

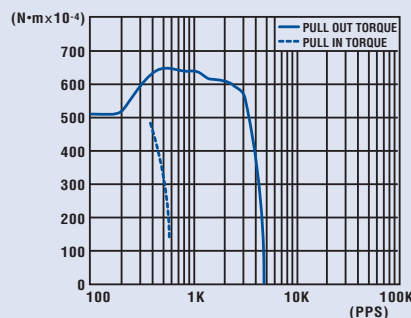


MODEL SPECIFICATIONS

Model Number	Rated Voltage V	Rated Current/ Phase A	Winding Resistance/ Phase Ω	Holding Torque g-cm	Inductance mH	Rotor Inertia g-cm ²	Detent Torque g-cm	Weight g
17PU-H008V	3.70	0.90	4.10	600	2.9	34.0	180	200
17PU-H010V	4.80	0.80	6.00	750	3.4	34.0	180	200
17PU-H309V	6.10	0.80	7.60	1,000	5.2	45.0	250	250
17PU-H312V	9.50	0.50	19.00	1,000	17.0	45.0	250	250

TORQUE/SPEED CHARACTERISTICS

Model: 17PU-H010V
 Driver: Unipolar Chopper Dual • Supply Voltage: 24.0 (Volt)
 Drive Current: 0.80 (A/WDG) • Load Inertia: 34.0 (g-cm²)



Model: 17PU-H309V
 Driver: Unipolar Chopper Dual • Supply Voltage: 24.0 (Volt)
 Drive Current: 0.80 (A/WDG) • Load Inertia: 34.0 (g-cm²)

