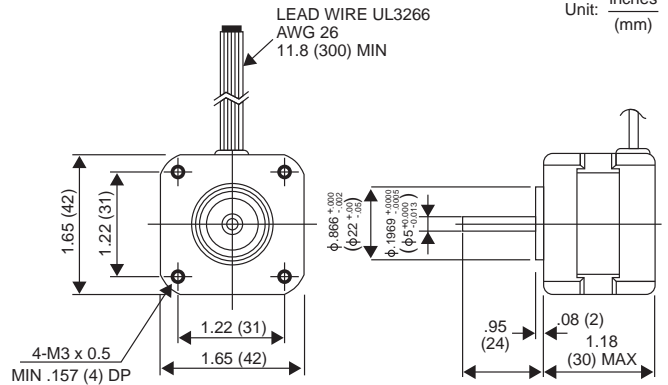
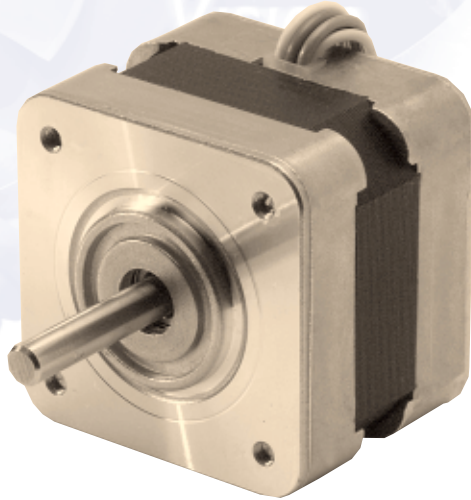


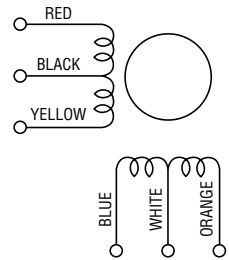
17PW-M 1.875° HYBRID



GENERAL SPECIFICATIONS

Step Angle 1.875°
 Step Angle Accuracy +/-5%
 Temperature Rise 80° C Max.
 Ambient Temperature Range -20° to +50° C
 Insulation Resistance 100M Ω Min., 500 VDC
 Dielectric Strength 500 VAC for 1 min.
 Radial Play 0.02 mm Max. (450 g-load)
 End Play 0.08 mm Max. (450 g-load)
 Switching Sequence See page 31

WINDING DIAGRAM



MODEL SPECIFICATIONS

Model Number	Rated Voltage V	Rated Current/ Phase A	Winding Resistance/ Phase Ω	Holding Torque g-cm	Inductance mH	Rotor Inertia g-cm ²	Detent Torque g-cm	Weight g
17PW-M003	4.9	0.65	7.5	1,200	6.2	17.0	250	200

TORQUE/SPEED CHARACTERISTICS

Model: 17PW-M003
 Driver: Unipolar Chopper Dual • Supply Voltage: 24.0 (Volt)
 Drive Current: 0.65 (A/WDG) • Load Inertia: 34.0 (g-cm²)

