

Technical Data

DIODE



maximum ratings

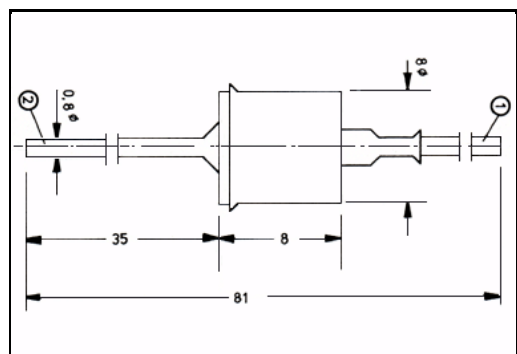
| | | | | |
|--|--------|------|------|--------------|
| Voltage, Reverse (VR) | 1000.0 | V | NO. | 1N3942B |
| Voltage, Reverse Peak (VRM) | 1160.0 | V | TYPE | SILICON |
| Current at VR = 0V (IO) | | A | | CONTROLLED |
| Current Average Rectified (IF) | 2.0 | A | | AVALANCHE |
| Current Surge Peak (IFM) | 6.5 | A | CASE | DO-13X_D=8MM |
| Current, Surge (IFM) at tp = 10 ms | 70.0 | A | | |
| Max. Power Dissipation (PT) at TC = °C | | W | | |
| Max. Thermal Resistance (Rth J-A) | 70.0 | °C/W | | |
| Max. Junction Temperature (TJ) | 175.0 | °C | | |

PERFORMANCE CHARACTERISTICS at T_c = 25°C, unless otherwise noted

| NO. | SYMBOL | CONDITIONS | MIN. | MAX. | UNITS |
|-----|--------|------------------------------|--------|--------|-------|
| 1. | VF | IF = 2.0 A (1) | - | 1.1 | V |
| 2. | IR | VR = 1000.0 V | - | 5.0 | μA |
| 3. | IR | VR = 1000.0 V, TC = 150.0° C | - | 500.0 | μA |
| 4. | VBR | IR = 50.0 μA | 1160.0 | 1500.0 | V |
| 5. | PRSM | tp = 10.0 μs | - | 1.5 | kW |
| 6. | | | | | |
| 7. | | | | | |
| 8. | | | | | |
| 9. | | | | | |
| 10. | | | | | |
| 11. | | | | | |
| 12. | | | | | |
| 13. | | | | | |
| 14. | | | | | |
| 15. | | | | | |
| 16. | | | | | |
| 17. | | | | | |
| 18. | | | | | |
| 19. | | | | | |
| 20. | | | | | |

Notes (1) pulse-tested tp ≤ 300 μs, duty cycle ≤ 2 %

DIMENSIONS in mm



Marking 1N3942B
 Customer GENERAL PURPOSE