

**FAST RECOVERY
GLASS PASSIVATED RECTIFIERS**

REVERSE VOLTAGE - **50 to 600** Volts
FORWARD CURRENT - **1.0** Ampere

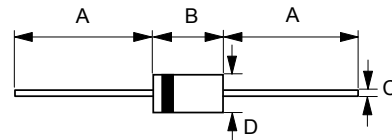
FEATURES

- Fast switching for high efficiency
- Glass passivated chip
- Low reverse leakage current
- Low forward voltage drop
- High current capability
- Plastic material has UL flammability classification 94V-0

MECHANICAL DATA

- Case : JEDEC DO-41 molded plastic
- Polarity : Color band denotes cathode
- Weight : 0.012 ounces, 0.34 grams
- Mounting position : Any

DO-41



DO-41		
Dim.	Min.	Max.
A	25.4	-
B	4.10	5.20
C	0.71 \varnothing	0.86 \varnothing
D	2.00 \varnothing	2.70 \varnothing
All Dimensions in millimeter		

MAXIMUM RATINGS AND ELECTRICAL CHARACTERISTICS

Ratings at 25°C ambient temperature unless otherwise specified.

CHARACTERISTICS	SYMBOL	1N4933G	1N4934G	1N4935G	1N4936G	1N4937G	UNIT
Maximum Recurrent Peak Reverse Voltage	VRRM	50	100	200	400	600	V
Maximum RMS Voltage	VRMS	35	70	140	280	420	V
Maximum DC Blocking Voltage	VDC	60	100	200	400	600	V
Maximum Average Forward Rectified Current @TA=75°C	I(AV)	1.0					A
Peak Forward Surge Current 8.3ms single half sine-wave super imposed on rated load (JEDEC Method)	IFSM	30					A
Maximum forward Voltage at 1.0A DC	VF	1.3					V
Maximum DC Reverse Current at Rated DC Blocking Voltage @TJ=25°C @TJ=100°C	IR	5 50					uA uA
Maximum Reverse Recovery Time (Note 1)	TRR	200					ns
Maximum Reverse Recovery Time (Note 2)	TRR	130					ns
Typical Junction Capacitance (Note 3)	CJ	15					pF
Typical Thermal Resistance (Note 4)	RθJA	50					°C/W
Operating Temperature Range	TJ	-55 to +150					°C
Storage Temperature Range	TSTG	-55 to +150					°C

- NOTES : 1. Measured with IF=1.0A, VR=30V, di/dt=50A/us.
 2. Measured with IF=0.5A, IR=1A, IRR=0.25A.
 3. Measured at 1.0MHz and applied reverse voltage of 4.0V DC.
 4. Thermal Resistance Junction to Ambient.

FIG.1 - FORWARD CURRENT DERATING CURVE

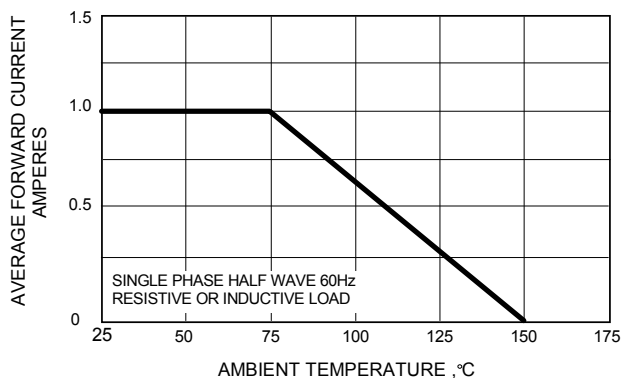


FIG.2 - MAXIMUM NON-REPETITIVE SURGE CURRENT

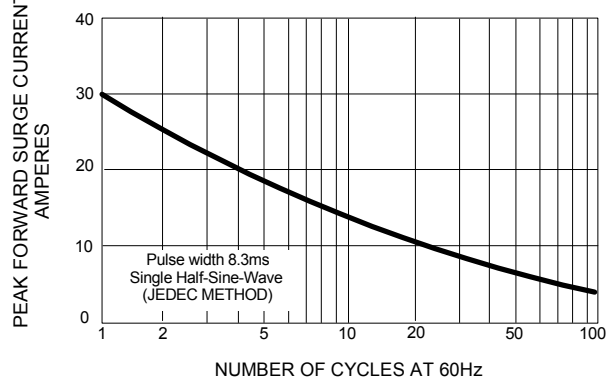


FIG.3 - TYPICAL JUNCTION CAPACITANCE

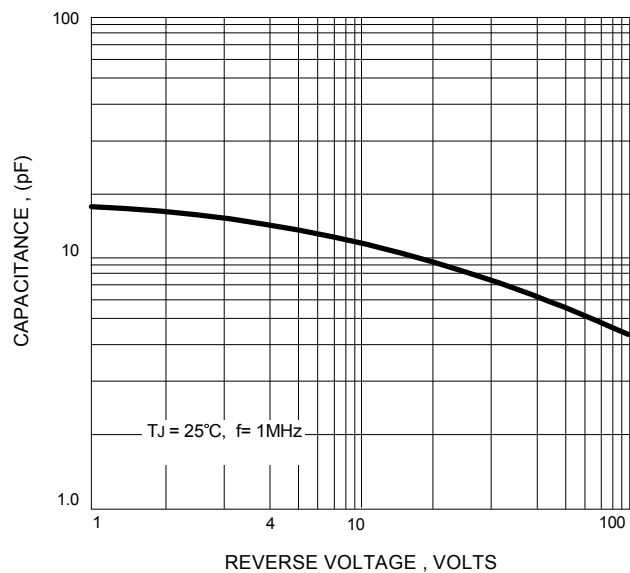
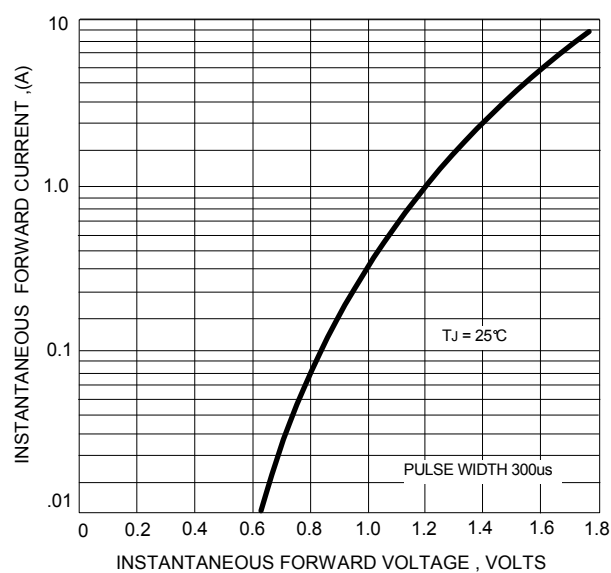


FIG.4 - TYPICAL FORWARD CHARACTERISTICS



Important Notice and Disclaimer

LSC reserves the right to make changes to this document and its products and specifications at any time without notice. Customers should obtain and confirm the latest product information and specifications before final design, purchase or use.

LSC makes no warranty, representation or guarantee regarding the suitability of its products for any particular purpose, nor does LSC assume any liability for application assistance or customer product design. LSC does not warrant or accept any liability with products which are purchased or used for any unintended or unauthorized application.

No license is granted by implication or otherwise under any intellectual property rights of LSC.

LSC products are not authorized for use as critical components in life support devices or systems without express written approval of LSC.