

POWER DISCRETES
Description

Quick reference data

$$V_R = 200 - 1000 \text{ V}$$

$$I_o = 1.0\text{A}$$

$$t_{rr} = 150 \text{ to } 500\text{nS}$$

$$V_F = 1.2\text{V}$$

Features

- ◆ Low reverse leakage current
- ◆ Hermetically sealed in Metoxilite fused metal oxide
- ◆ Low forward voltage drop

These products are qualified to MIL-PRF-19500/359

Electrical Specifications

Electrical specifications @ $T_A = 25^\circ\text{C}$ unless otherwise specified.

| Types | V_{RWM} | I_F (AV) @ 55°C | | I_{FSM} | I_{FRM} @ $tp=8.3\text{ms}$ | T_{RR} | V_F @ I_F | | I_R @ V_{RWM} | | C_J @ 5V 1MHz | T_{STG} | $R\theta jL$ | |
|--------|-----------|------------------------------------|----------|-----------|-------------------------------------|----------|---------------|-----|-------------------|---------------|--------------------|------------------|----------------------|----------------------|
| | | -pcb mid | L = 3/8" | | | | | | 25°C | 100°C | | | | |
| | V(pk) | A | A | A | A | ns | V | A | μA | μA | pF | $^\circ\text{C}$ | C/W $^\circ\text{C}$ | C/W $^\circ\text{C}$ |
| 1N4942 | 200 | 1.0 | 2.0 | 25 | 6.0 | 150 | 1.2 | 1.0 | 0.5 | 25 | 27 | -65 to +175 | 3 | 7 |
| 1N4944 | 400 | 1.0 | 2.0 | 25 | 6.0 | 150 | 1.2 | 1.0 | 0.5 | 25 | 27 | -65 to +175 | 3 | 7 |
| 1N4946 | 600 | 1.0 | 2.0 | 25 | 6.0 | 250 | 1.2 | 1.0 | 0.5 | 25 | 27 | -65 to +175 | 3 | 7 |
| 1N4947 | 800 | 1.0 | 2.0 | 25 | 6.0 | 250 | 1.2 | 1.0 | 0.5 | 25 | 18 | -65 to +175 | 3 | 7 |
| 1N4948 | 1000 | 1.0 | 2.0 | 25 | 6.0 | 500 | 1.2 | 1.0 | 0.5 | 25 | 18 | -65 to +175 | 3 | 7 |

POWER DISCRETES

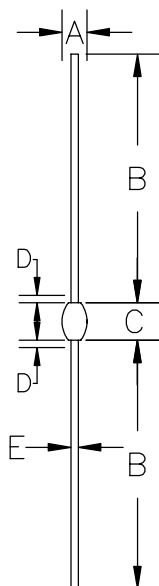
Ordering Information

| Part Number | Description |
|--|---|
| 1N4942 1N4944 1N4946 1N4947 1N4948 | Axial leaded hermetically sealed ⁽¹⁾ |

Note:

(1) Available in bulk or tape and reel packaging. Please consult factory for quantities.

Outline Drawing



G2

| DIM ^N | DIMENSIONS | | | | NOTE |
|------------------|------------|------|--------|------|------|
| | MM | | INCHES | | |
| | MIN | MAX | MIN | MAX | |
| A | 1.6 | 2.8 | .065 | .110 | — |
| B | 25.4 | 33.0 | 1.00 | 1.30 | — |
| C | 3.5 | 4.2 | .140 | .165 | — |
| D | — | .80 | — | .030 | 1 |
| E | .66 | .84 | .026 | .033 | — |

NOTE:

1. LEAD DIAMETER UNCONTROLLED OVER THIS REGION.

Contact Information

Semtech Corporation
Power Discrettes Products Division
200 Flynn Road, Camarillo, CA 93012
Phone: (805)498-2111 FAX (805)498-3804