

# 1N5832-1N5834

## SCHOTTKY RECTIFIERS

### FEATURES

- Available as "HR" (high reliability) screened per MIL-PRF-19500, JANTX level. Add "HR" suffix to base part number.
- Available as non-RoHS (Sn/Pb plating), standard, and as RoHS by adding "-PBF" suffix.

### MAXIMUM RATINGS

Parameter	Symbol	Value
Storage temperature range	$T_{STG}$	-65 to +175°C
Operating junction temperature range	$T_J$	-65 to +125°C
Maximum thermal resistance	$R_{\theta JC}$	1.0°C/W junction to Case
Maximum mounting torque		30 inch pounds maximum
Weight		.54 ounces (15.3 grams) typical

### ELECTRICAL CHARACTERISTICS ( $T_A = 25^\circ\text{C}$ unless otherwise specified)

Parameter	Symbol	Test Conditions	1N5832	1N5833	1N5834
Working peak reverse voltage	$V_{RWM}$		20V	30V	40V
Peak repetitive reverse voltage	$V_{RRM}$		20V	30V	40V
Average forward current	$I_{F(AV)}$	$T_C = 100^\circ\text{C}$ , half sine wave, $R_{\theta JC} = 1.0^\circ\text{C/W}$	40A	40A	40A
Maximum surge current	$I_{FSM}$	8.3ms, half sine, $T_J = 125^\circ\text{C}$	800A	800A	800A
Maximum peak forward voltage	$V_{FM}$	$I_{FM} = 10\text{A}$ , $T_J = 25^\circ\text{C}$	.360V	.370V	.380V
Maximum peak forward voltage	$V_{FM}$	$I_{FM} = 40\text{A}$ , $T_J = 25^\circ\text{C}$	.520V	.550V	.590V
Maximum peak forward voltage	$V_{FM}$	$I_{FM} = 125\text{A}$ , $T_J = 25^\circ\text{C}$	.980V	1.080V	1.180V
Maximum peak reverse current	$I_{RM}$	$V_{RRM}$ , $T_J = 100^\circ\text{C}$	150mA	150mA	150mA
Maximum peak reverse current	$I_{RM}$	$V_{RRM}$ , $T_J = 25^\circ\text{C}^*$	20mA	20mA	20mA
Typical junction capacitance	$C_J$		2200pF	2200pF	2200pF

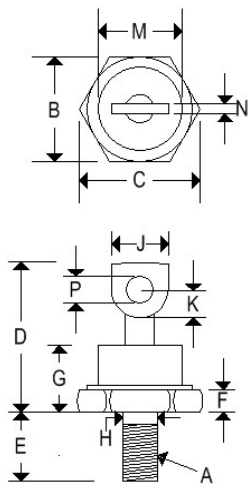
Pulse test: Pulse width 300  $\mu\text{sec}$ , duty cycle 2%

# 1N5832-1N5834

## SCHOTTKY RECTIFIERS

### MECHANICAL CHARACTERISTICS

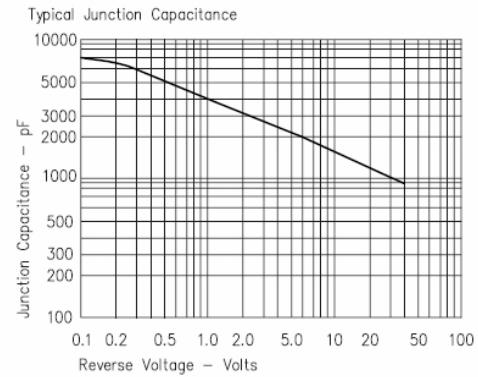
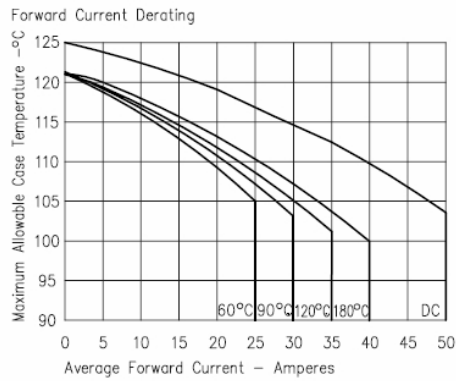
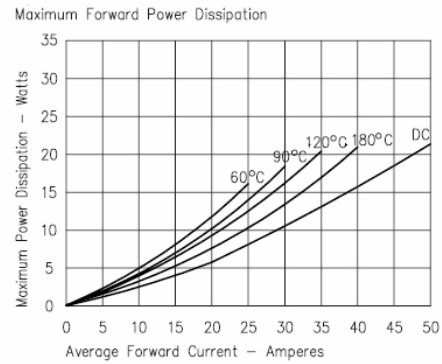
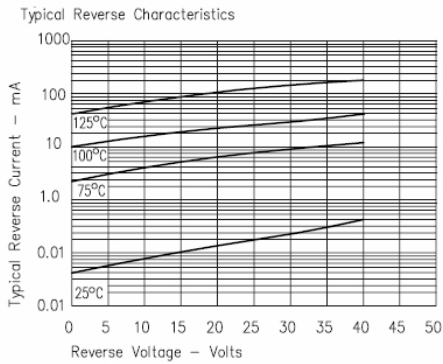
Case	DO-5(R)
Marking	Alpha numeric
Normal polarity	Cathode is stud
Reverse polarity	Anode is stud (add "R" suffix)



	DO-5(R)			
	Inches		Millimeters	
	Min	Max	Min	Max
A	¼-28 UNF2A threads			
B	0.669	0.688	16.990	17.480
C	-	0.794	-	20.160
D	-	1.000	-	25.400
E	0.422	0.453	10.720	11.510
F	0.115	0.200	2.920	5.080
G	-	0.450	-	11.430
H	0.220	0.249	5.580	6.320
J	0.250	0.375	6.350	9.530
K	0.156	-	3.960	-
M	-	0.667	-	16.940
N	0.030	0.080	0.760	2.030
P	0.140	0.175	3.560	4.450

# 1N5832-1N5834

## SCHOTTKY RECTIFIERS



# 1N5832-1N5834

## SCHOTTKY RECTIFIERS

