

5W, 11V - 51V Surface Mount Silicon Zener Diode

FEATURES

- Photo Glass passivated junction
- Ideal for automated placement
- Low inductance
- Moisture sensitivity level: level 1, per J-STD-020
- AEC-Q101 qualified available: ordering code with suffix "H"
- Compliant to RoHS Directive 2011/65/EU and in accordance to WEEE 2002/96/EC
- Halogen-free according to IEC 61249-2-21

KEY PARAMETERS

PARAMETER	VALUE	UNIT
V_Z	11 - 51	V
P_D	5.0	W
$T_{J\text{MAX}}$	175	°C
Package	DO-214AB (SMC)	
Configuration	Single die	

APPLICATIONS

- Switching mode power supply (SMPS)
- Adapters
- Lighting application
- On-board DC/DC converter



MECHANICAL DATA

- Case: DO-214AB (SMC)
- Molding compound meets UL 94 V-0 flammability rating
- Terminal: Matte tin plated leads, solderable per J-STD-002
- Meet JESD 201 class 2 whisker test
- Weight: 0.21 g (approximately)



DO-214AB (SMC)

ABSOLUTE MAXIMUM RATINGS ($T_A = 25^\circ\text{C}$ unless otherwise noted)

PARAMETER	SYMBOL	VALUE	UNIT
DC power dissipation at $T_L = 75^\circ\text{C}$, measure at zero lead length (Note 1) derate above 75°C	P_D	5	W
Junction temperature	T_J	-55 to +175	°C
Storage temperature	T_{STG}	-55 to +175	°C

Note:

1. Mounted on Cu-Pad size 16mm x 16mm on PCB

THERMAL PERFORMANCE

PARAMETER	SYMBOL	TYP	UNIT
Junction-to-lead thermal resistance	$R_{\theta JL}$	20	°C/W
Junction-to-ambient thermal resistance	$R_{\theta JA}$	55	°C/W
Junction-to-case thermal resistance	$R_{\theta JC}$	22	°C/W

Thermal Performance Note: Units mounted on PCB (16mm x 16mm Cu pad test board)

ELECTRICAL SPECIFICATIONS ($T_A = 25^\circ\text{C}$ unless otherwise noted)											
Device (Note 1)	Device Marking Code	Nominal Zener Voltage			Test current	Zener Impedance			Leakage Current		Maximum DC Zener Current
		$V_Z @ I_{ZT}$			I_{ZT}	$Z_{ZT} @ I_{ZT}$	$Z_{ZK} @ I_{ZK}$		$I_R @ V_R$		I_{ZM}
		Min.	Nom.	Max.	mA	Ω	Ω	mA	μA	V	mA
1PGSMC5348	P348B	10.45	11	11.55	125	3	125	1	5	8.4	430
1PGSMC5349	P349B	11.40	12	12.60	100	3	150	1	2	9.1	395
1PGSMC5350	P350B	12.35	13	13.65	100	3	150	1	1	9.9	365
1PGSMC5351	P351B	13.30	14	14.70	100	3	150	1	1	10.6	345
1PGSMC5352	P352B	14.25	15	15.75	75	3	150	1	1	11.5	315
1PGSMC5353	P353B	15.20	16	16.80	75	3	150	1	1	12.2	295
1PGSMC5354	P354B	16.15	17	17.85	70	3	150	1	0.5	12.9	280
1PGSMC5355	P355B	17.10	18	18.90	65	3	150	1	0.5	13.7	264
1PGSMC5356	P356B	18.05	19	19.95	65	3	150	1	0.5	14.4	250
1PGSMC5357	P357B	19.00	20	21.00	65	3	150	1	0.5	15.2	237
1PGSMC5358	P358B	20.90	22	23.10	50	4	150	1	0.5	16.7	216
1PGSMC5359	P359B	22.80	24	25.20	50	4	180	1	0.5	18.2	198
1PGSMC5360	P360B	23.75	25	26.25	50	4	180	1	0.5	19.0	190
1PGSMC5361	P361B	25.65	27	28.35	50	5	180	1	0.5	20.6	176
1PGSMC5362	P362B	26.60	28	29.40	50	6	180	1	0.5	21.2	170
1PGSMC5363	P363B	28.50	30	31.50	40	8	180	1	0.5	22.8	158
1PGSMC5364	P364B	31.35	33	34.65	40	10	180	1	0.5	25.1	144
1PGSMC5365	P365B	34.20	36	37.80	30	11	200	1	0.5	27.4	132
1PGSMC5366	P366B	37.05	39	40.95	30	14	200	1	0.5	29.7	122
1PGSMC5367	P367B	40.85	43	45.15	30	20	200	1	0.5	32.7	110
1PGSMC5368	P368B	44.65	47	49.35	25	25	200	1	0.5	35.8	100
1PGSMC5369	P369B	48.45	51	53.55	25	27	200	1	0.5	38.8	93

Notes:

1. Tolerance and type number designation the type numbers listed indicate a tolerance of 5%

ORDERING INFORMATION			
ORDERING CODE (Note 1, 2)	PACKAGE	PACKING	STATUS
1PGSMC53xxHR7G	SMC	850 / 7" Plastic reel	NRND
1PGSMC53xxHR6G	SMC	3,000 / 13" Paper reel	NRND
1PGSMC53xxHM6G	SMC	3,000 / 13" Plastic reel	NRND
1PGSMC53xx R7G	SMC	850 / 7" Plastic reel	NRND
1PGSMC53xx R6G	SMC	3,000 / 13" Paper reel	NRND
1PGSMC53xx M6G	SMC	3,000 / 13" Plastic reel	NRND
1PGSMC53xxHV7G	Matrix SMC	850 / 7" Plastic reel	Active
1PGSMC53xxHV6G	Matrix SMC	3,000 / 13" Plastic reel	Active
1PGSMC53xx V7G	Matrix SMC	850 / 7" Plastic reel	Active
1PGSMC53xx V6G	Matrix SMC	3,000 / 13" Plastic reel	Active

Note:

1. "xx" defines voltage from 11V (1PGSMC5348) to 51V (1PGSMC5369)
2. "H" means AEC-Q101 qualified

CHARACTERISTICS CURVES

($T_A = 25^\circ\text{C}$ unless otherwise noted)

Fig.1 Steady State Power Derating

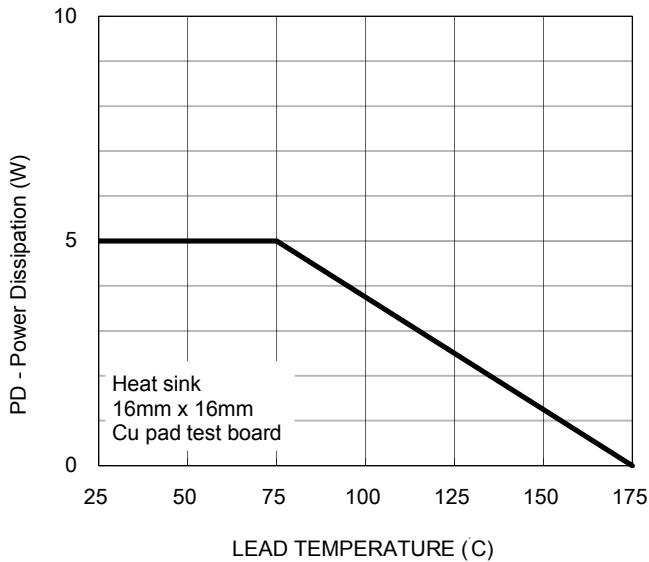


Fig.2 Typical Junction Capacitance

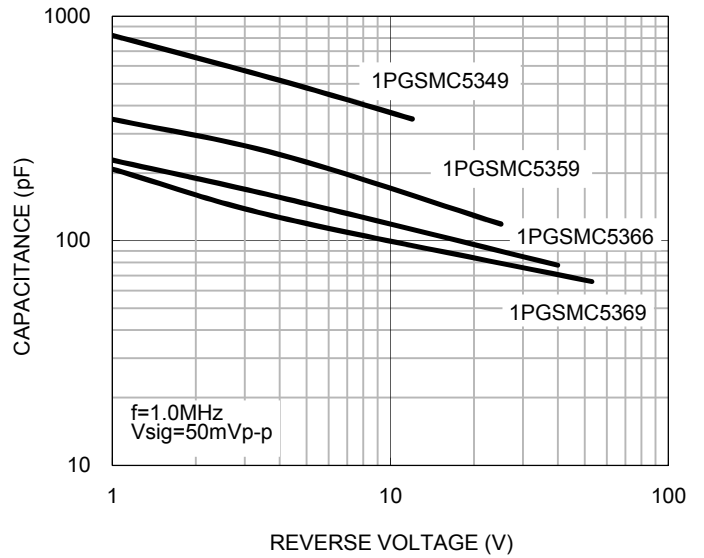
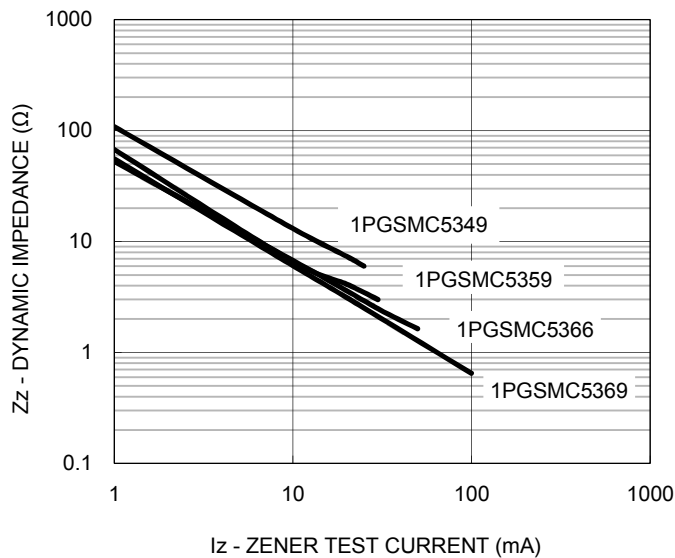
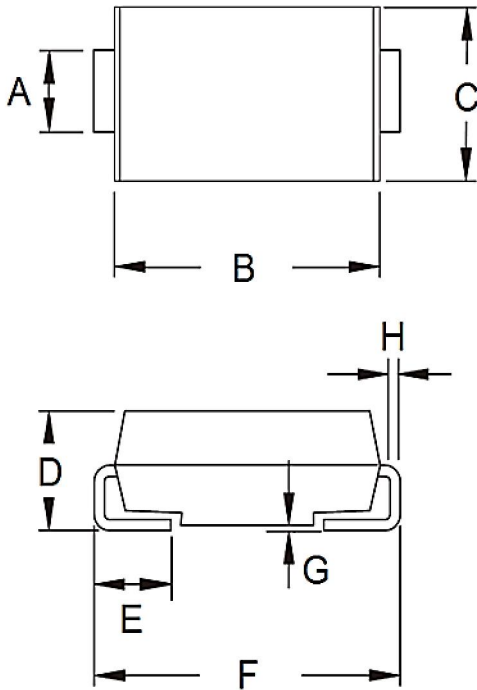


Fig.3 Typical Zener Impedance



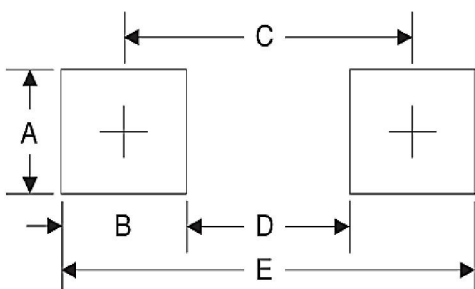
PACKAGE OUTLINE DIMENSIONS

DO-214AB (SMC)



DIM.	Unit (mm)		Unit (inch)	
	Min	Max	Min	Max
A	2.90	3.20	0.114	0.126
B	6.60	7.11	0.260	0.280
C	5.59	6.22	0.220	0.245
D	2.00	2.62	0.079	0.103
E	1.00	1.60	0.039	0.063
F	7.75	8.13	0.305	0.320
G	0.10	0.20	0.004	0.008
H	0.15	0.31	0.006	0.012

SUGGESTED PAD LAYOUT



Symbol	Unit (mm)	Unit (inch)
A	3.30	0.130
B	2.50	0.098
C	6.80	0.268
D	4.40	0.173
E	9.40	0.370

MARKING DIAGRAM



SMC



Matrix SMC

- P/N =Marking Code
- G =Green Compound
- YW =Date Code
- F =Factory Code

Notice

Specifications of the products displayed herein are subject to change without notice. TSC or anyone on its behalf, assumes no responsibility or liability for any errors or inaccuracies.

Information contained herein is intended to provide a product description only. No license, express or implied, to any intellectual property rights is granted by this document. Except as provided in TSC's terms and conditions of sale for such products, TSC assumes no liability whatsoever, and disclaims any express or implied warranty, relating to sale and/or use of TSC products including liability or warranties relating to fitness for a particular purpose, merchantability, or infringement of any patent, copyright, or other intellectual property right.

The products shown herein are not designed for use in medical, life-saving, or life-sustaining applications. Customers using or selling these products for use in such applications do so at their own risk and agree to fully indemnify TSC for any damages resulting from such improper use or sale.