

1R5JH45

PRV : 600 Volts
Io : 1.5 Amperes

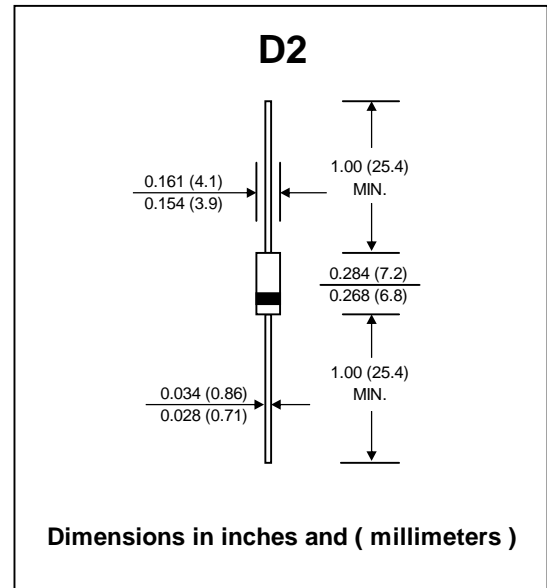
FEATURES :

- * High current capability
- * High surge current capability
- * High reliability
- * Low reverse current
- * Low forward voltage drop
- * Fast switching for high efficiency
- * **Pb / RoHS Free**

MECHANICAL DATA :

- * Case : D2 Molded plastic
- * Epoxy : UL94V-O rate flame retardant
- * Lead : Axial lead solderable per MIL-STD-202, Method 208 guaranteed
- * Polarity : Color band denotes cathode end
- * Mounting position : Any
- * Weight : 0.465 gram

FAST RECOVERY RECTIFIER DIODE



MAXIMUM RATINGS AND ELECTRICAL CHARACTERISTICS

Rating at 25 °C ambient temperature unless otherwise specified.
Single phase, half wave, 60 Hz, resistive or inductive load.
For capacitive load, derate current by 20%.

RATING	SYMBOL	VALUE	UNIT
Maximum Repetitive Peak Reverse Voltage	V_{RRM}	600	V
Maximum Average Forward Current	$I_{F(AV)}$	1.5	A
Maximum Peak One Cycle Surge Forward Current (Non-Repetitive)	I_{FSM}	50 (50Hz) 55 (60Hz)	A
Maximum Peak Forward Voltage at $I_F = 1.5$ A	V_F	1.2	V
Maximum Repetitive Peak Reverse Current at V_{RRM}	I_R	100	μA
Maximum Reverse Recovery Time (Note 1)	T_{rr}	200	ns
Thermal Resistance - Junction to Ambient	$R_{\theta JA}$	58	$^{\circ}C / W$
Junction Temperature Range	T_J	- 40 to + 150	$^{\circ}C$
Storage Temperature Range	T_{STG}	- 40 to + 150	$^{\circ}C$

Note:

(1) Reverse Recovery Test Conditions : $I_F = 1$ A, $di/dt = -30$ A/ μs .

RATING AND CHARACTERISTIC CURVES (1R5JH45)

FIG.1 - REVERSE RECOVERY TIME CHARACTERISTIC AND TEST CIRCUIT DIAGRAM

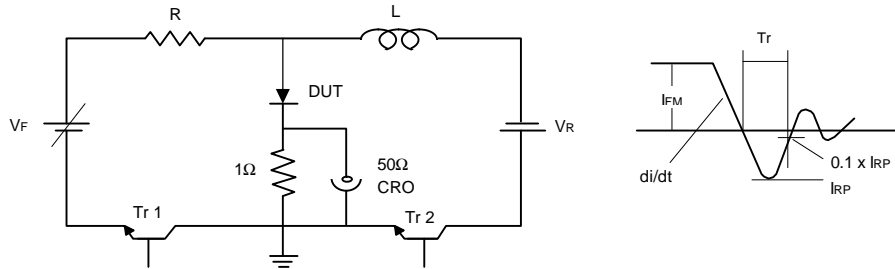


FIG.2 - DERATING CURVE FOR OUTPUT RECTIFIED CURRENT

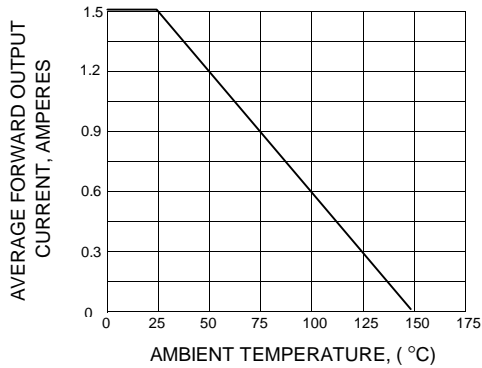


FIG.3 - MAXIMUM NON-REPETITIVE PEAK FORWARD SURGE CURRENT

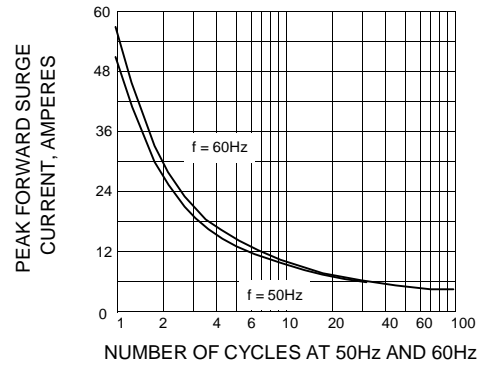


FIG.4 - TYPICAL FORWARD CHARACTERISTICS

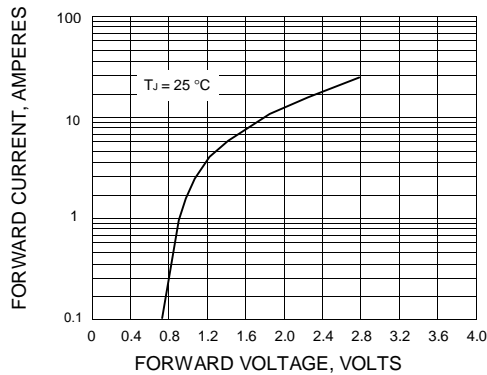


FIG.5 - TYPICAL REVERSE CHARACTERISTICS

