

Stepper Motor

Model: 23HS8430

Specifications:

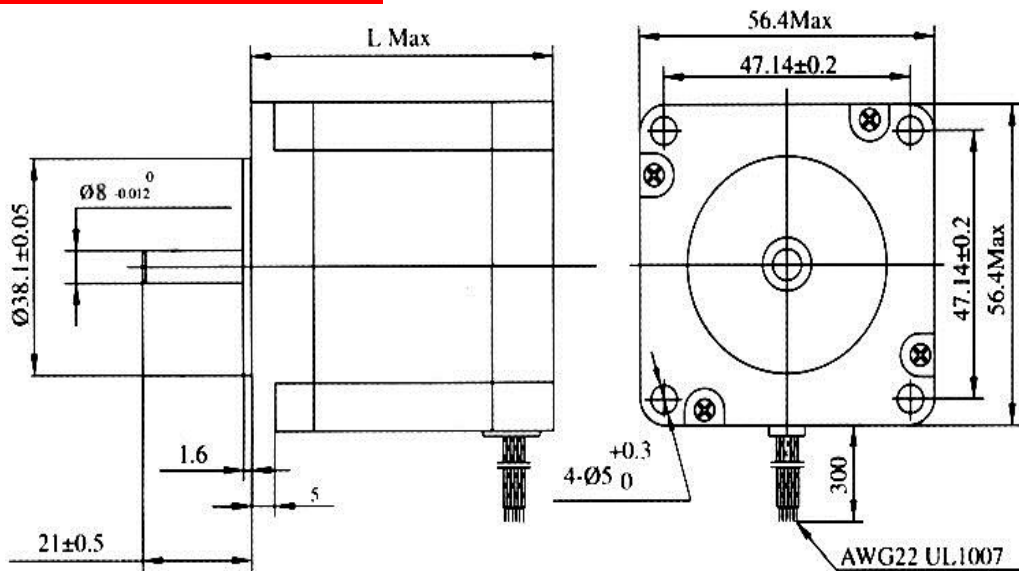
- Step Accuracy: $\pm 5\%$
- Resistance Accuracy: $\pm 10\%$
- Inductance Accuracy: $\pm 20\%$
- Temperature Rise: 80°C MAX.
- Ambient Temperature Range: -20°C~ +50°C
- Storage Temperature Range: -30°C~ +60°C
- Insulation Resistance: 100M Ω MIN. 500V DC
- Dielectric Strength: 500V AC 1min
- Radial Play: 0.02mm MAX. (450g Load)
- End Play: 0.08mm MAX. (450g Load)
- Max. Radial force: 75N
- Max. Axial force: 15N

Electrical Specifications:

Model	Step Angle (°)	Motor Length (mm)	Rated Current (A)	Phase Resistance (Ω)	Phase Inductance mH	Holding Torque(MIN) (N.cm)	Detent Torque(MAX) (N.cm)	Rotor Torque (g.cm ²)	Lead Wire	Motor Weight (KG)
23HS8430	1.8	76	3.0	1.0	3.5	180	6	440	4	1.05

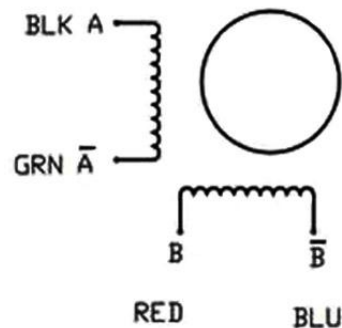


Mechanical Dimensions:



Wiring:

- Red: A+
- Green: A-
- Yellow: +
- Blue: B-



Usage or Application:

This product is widely used in engraving machine, printer, medical equipment, embroidery machine, stage lighting, textile automation, printing, packaging and other industries automation equipment.