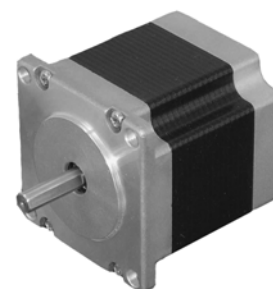


□56.4mm(□2.22in.)

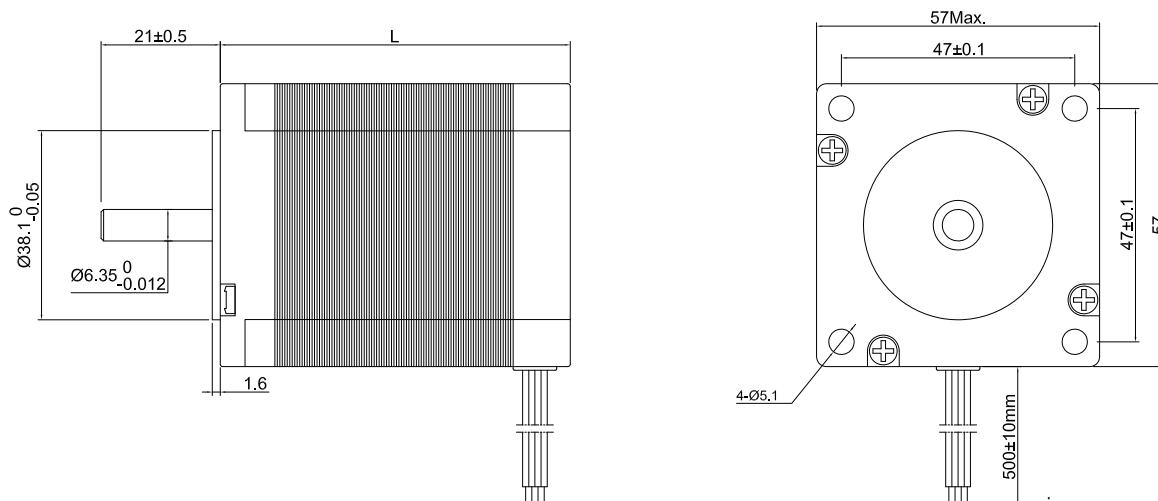
Step Angle 1.2° 23HT 3-Phase Type

Common Rating

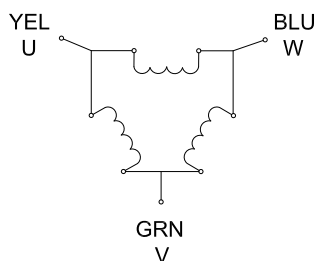
Item	Specification
Step Angle Accuracy	±5% (full step, no load)
Temperature Rise	80°C Max. (rated current, 2 phase on)
Ambient Temperature	-10°C ~ +50°C
Insulation Resistance	100MΩ Min. 500VDC
Dielectric Strength	500VAC for one minute



Dimension Unit = mm(in.)



Wiring Diagram



Specifications

Model	Torque		Voltage	Current	Resistance	Inductance	Inertia	Bi/Unipolar	Weight	Length "L"	
	Ncm	oz.in	V/Phase	A/Phase	Ohm/Phase	mH/Phase	g.cm ²	# of Leads	Kg	mm	in
23HT17-5206S	45	63.7	6.76	5.2	1.3	1.4	110	Uni (6)	0.45	42	1.65
23HT22-3006S	90	127.5	1.95	3	0.65	0.8	300	Uni (6)	0.75	56	2.20
23HT22-5606S	90	127.5	3.92	5.6	0.7	1.7	300	Uni (6)	0.75	56	2.20
23HT31-5206S	120	169.9	4.1	5.2	0.8	1.5	480	Uni (6)	1.1	79	3.11

* Specify -S for Single Shaft; -D for Double Shaft * All motor's specifications are based on full-step constant current operation