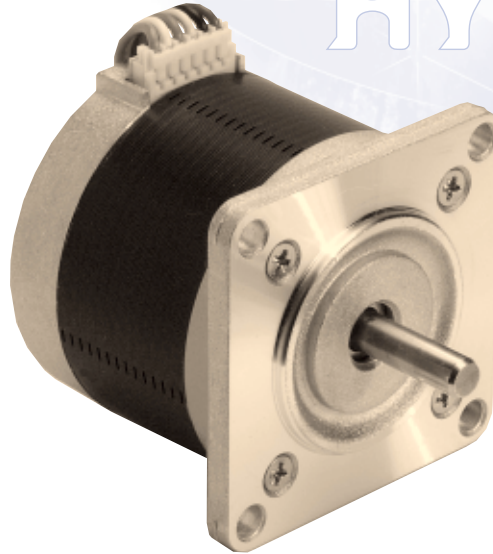
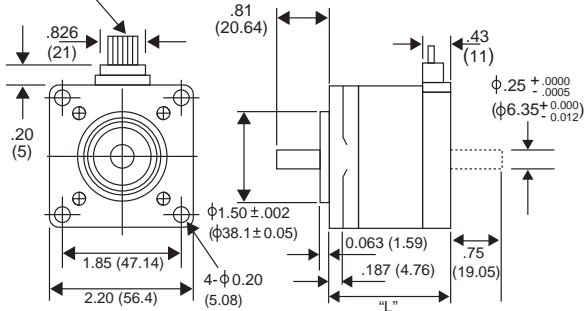


# 23LQ-C 5° HYBRID

# 23LQ-C 5° HYBRID

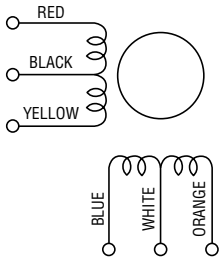
LEAD WIRE UL 1007  
AWG 22  
11.8 (300) MIN

Unit: inches  
(mm)



P/N	"L"
23LQ-C0XX	2.22 (56.5)
23LQ-C2XX	1.61 (41.0)
23LQ-C3XX	1.95 (49.5)

## WINDING DIAGRAM



## GENERAL SPECIFICATIONS

Step Angle ..... 5°  
 Step Angle Accuracy ..... +/-5%  
 Temperature Rise ..... 80° C Max.  
 Ambient Temperature Range ..... -20° to +50° C  
 Insulation Resistance ..... 100MΩ Min., 500 VDC  
 Dielectric Strength ..... 500 VAC for 1 min.  
 Radial Play ..... 0.02 mm Max. (450 g-load)  
 End Play ..... 0.08 mm Max. (450 g-load)  
 Switching Sequence ..... See page 31

## MODEL SPECIFICATIONS

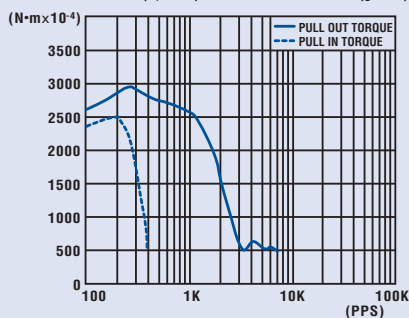
Model Number	Rated Voltage V	Rated Current/ Phase A	Winding Resistance/ Phase Ω	Holding Torque g-cm	Inductance mH	Rotor Inertia g-cm <sup>2</sup>	Detent Torque g-cm	Weight g
23LQ-C202V	3.9	1.1	3.50	2,300	4.0	55.0	370	360
23LQ-C309V	6.75	1.0	6.75	3,100	8.6	110.0	380	450
23LQ-C055V	3.4	2.0	1.70	3,600	2.7	160.0	450	540

Note: All models available with rear shafts.

## TORQUE/SPEED CHARACTERISTICS

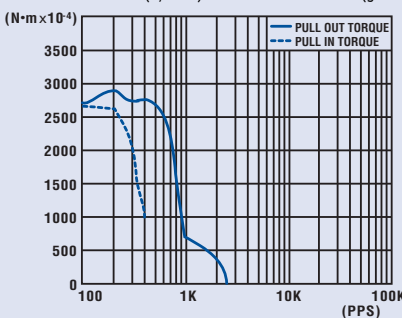
Model: 23LQ-C202V

Driver: Unipolar Chopper Dual • Supply Voltage: 24.0 (Volt)  
 Drive Current: 1.10 (A/WDG) • Load Inertia: 161.0 (g-cm<sup>2</sup>)



Model: 23LQ-C309V

Driver: Unipolar Chopper Dual • Supply Voltage: 24.0 (Volt)  
 Drive Current: 1.00 (A/WDG) • Load Inertia: 161.0 (g-cm<sup>2</sup>)



Model: 23LQ-C055V

Driver: Unipolar Chopper Dual • Supply Voltage: 24.0 (Volt)  
 Drive Current: 2.00 (A/WDG) • Load Inertia: 161.0 (g-cm<sup>2</sup>)

