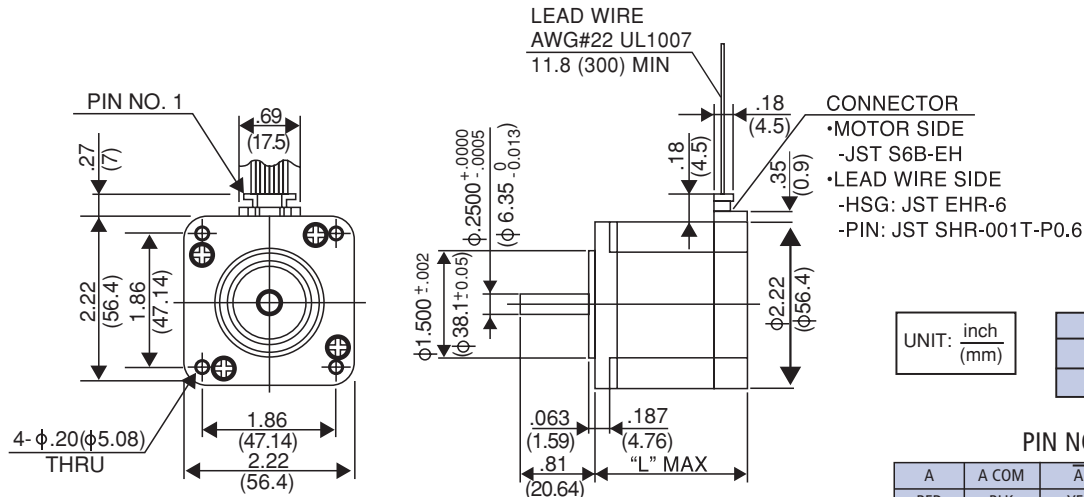
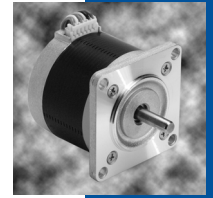


# 5.0°

# 23LQ-C

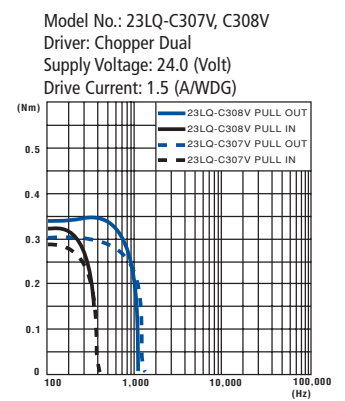
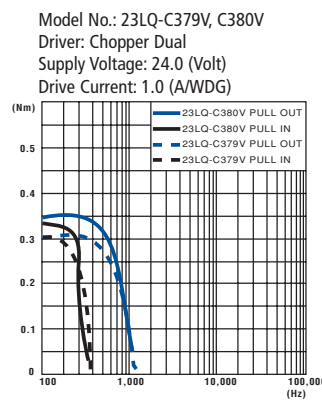
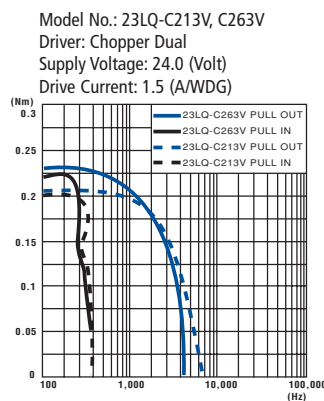
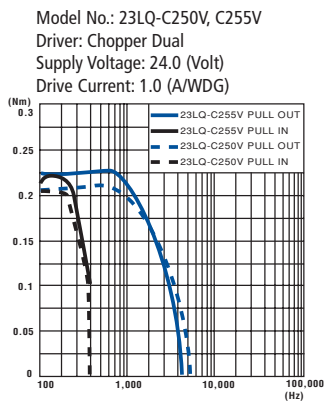
hybrid



## Model Specifications

Model Number	Step Angle	Drive Sequence	Rated Current/Wdg	Winding Resistance	Holding Torque	Inductance	Rotor Inertia	Detent Torque	Weight
	Degrees		Amps	Ohms	Nm (kg-cm)	mH	kg-cm <sup>2</sup>	Nm (g-cm)	g
23LQ-C250V	5.0°	UNIPOLAR	1.0	3.5	0.225 (2.3)	2.7	0.150	0.0488 (500)	470
23LQ-C255V	5.0°	BIPOLAR	1.0	3.5	0.274 (2.8)	4.2	0.150	0.0488 (500)	470
23LQ-C213V	5.0°	UNIPOLAR	1.5	1.55	0.225 (2.3)	1.9	0.150	0.0488 (500)	470
23LQ-C263V	5.0°	BIPOLAR	1.5	1.55	0.274 (2.8)	3.6	0.150	0.0488 (500)	470
23LQ-C379V	5.0°	UNIPOLAR	1.0	5.0	0.392 (4.0)	3.4	0.230	0.0687 (700)	590
23LQ-C380V	5.0°	BIPOLAR	1.0	5.0	0.450 (4.6)	5.3	0.230	0.0687 (700)	590
23LQ-C307V	5.0°	UNIPOLAR	1.5	2.2	0.392 (4.0)	2.4	0.230	0.0687 (700)	590
23LQ-C308V	5.0°	BIPOLAR	1.5	2.2	0.450 (4.6)	3.8	0.230	0.0687 (700)	590

## Torque/Speed Characteristics



— BI POLAR PULL OUT  
 — BI POLAR PULL IN  
 - - UNI POLAR PULL OUT  
 - - UNI POLAR PULL IN