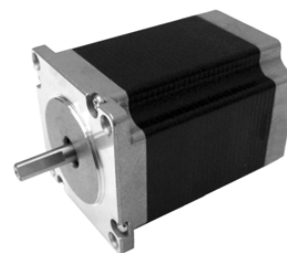


60mm(2.36in.)

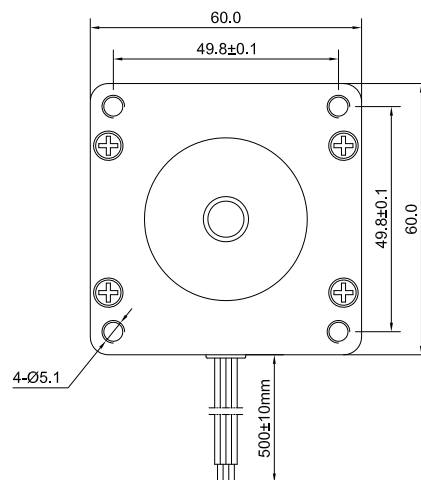
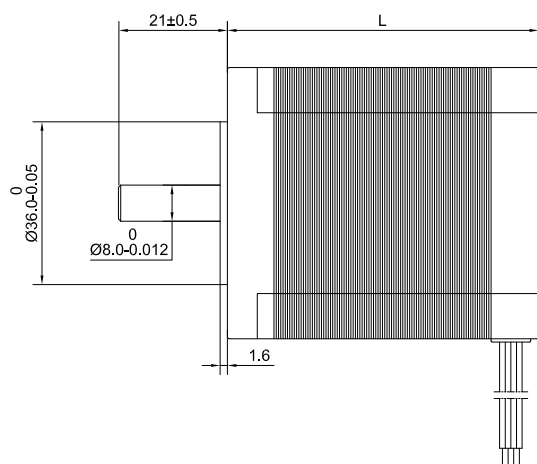
Step Angle 1.8° 24HS High-Torque Type

Common Rating

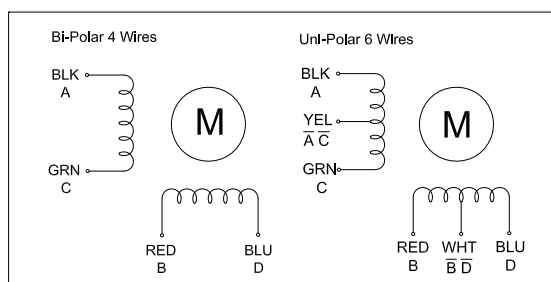
Item	Specification
Step Angle Accuracy	±5% (full step, no load)
Temperature Rise	80°C Max. (rated current, 2 phase on)
Ambient Temperature	-10°C~+50°C
Insulation Resistance	100MΩMin. 500VDC
Dielectric Strength	500VAC for one minute



Dimension Unit = mm(in.)



Wiring Diagram



Excitation Sequence

Excitation: 2-2					Excitation: 2-1-2				
STEP	A	B	C	D	STEP	A	B	C	D
1	+	+			1	+			
2		+	+		2	+	+		
3			+	+	3		+		
4	+			+	4		+	+	
					5			+	
					6			+	+
					7				+
					8	+			+

Specifications

Model	Torque		Voltage	Current	Resistance	Inductance	Inertia	Bi/Unipolar	Weight	Length "L"	
	Ncm	oz.in	V/Phase	A/Phase	Ohm/Phase	mH/Phase	g.cm ²	# of Leads	Kg	mm	in
24HS22-3006S	100	141.6	2.4	3	0.8	1.6	300	Uni (6)	0.77	57	2.24
24HS22-2006S	120	169.9	4	2	2	3.5	300	Uni (6)	0.77	57	2.24
24HS22-3004S	140	198.3	3.9	3	1.3	4.3	300	Bi (4)	0.77	57	2.24
24HS34-2006S	180	254.9	5.6	2	2.8	6	840	Uni (6)	1.34	87	3.43
24HS34-3006S	200	283.2	4.2	3	1.4	4.3	840	Uni (6)	1.34	87	3.43
24HS34-4004S	230	325.7	2.8	4	0.7	3.5	840	Bi (4)	1.34	87	3.43
24HS43-2004S	400	566.4	7	2	3.5	16	1080	Bi (4)	2	110	4.33

* Specify -S for Single Shaft; -D for Double Shaft * All motor's specifications are based on full-step constant current operation