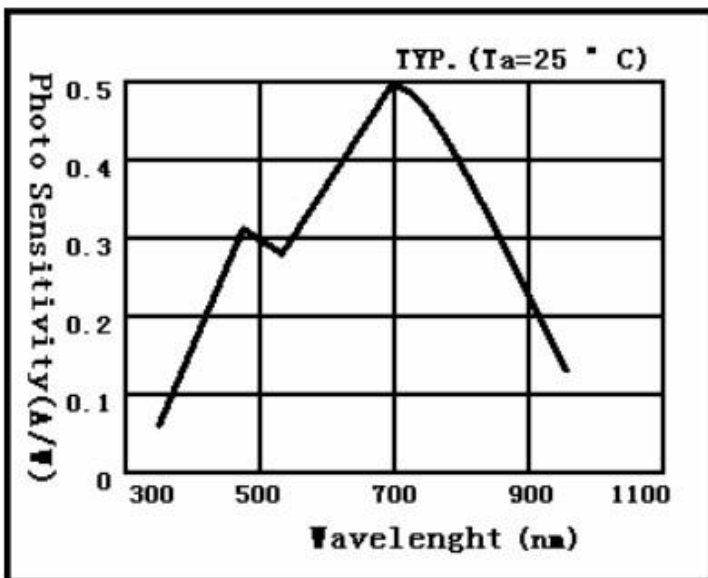


Parameter	Symbol	Value	Unit
Reverse voltage	Vr Max.	30	v
Operating temperature	Topr	-20 to +60	°C
Storage temperature	Tstg	-55 to +80	°C

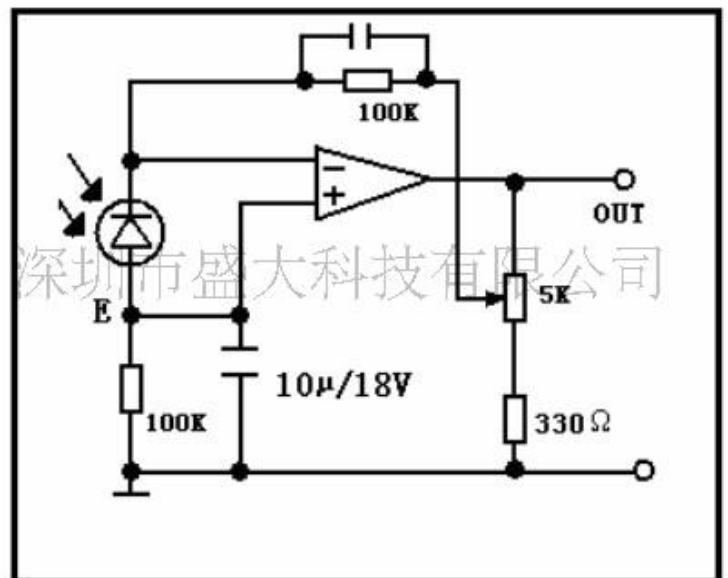
### Electrical and optical characteristics (Ta=25 °C)

Parameter	Symbol	Condition	Min.	Typ.	Max.	Unit
Spectral response range	$\lambda$		-	320 to 1100	-	nm
Peak sensitivity wavelength	$\lambda_p$		-	700	-	nm
Photo sensitivity	S	Isc=68 $\mu$ A	0.3	0.55	-	mA/mW
Dark current	ID	Vr=0.01V	-	0.2		nA
Terminal capacitance	Ct	Vr=0 V, f=10 kHz	-	4	-	nF
Rise time	tr	Vr=0 V, RL=1 k $\Omega$ 10 to 90 %	-	7	-	$\mu$ s

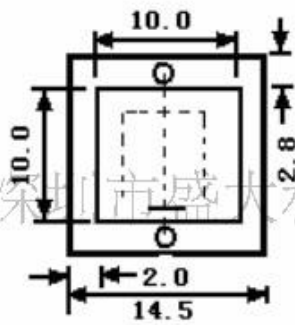
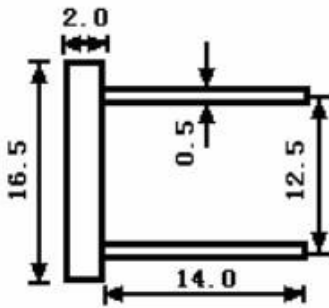
## Spectral Response



## Circuit



**Dimensional outline (unit: mm)**



深圳市盛大科技有限公司