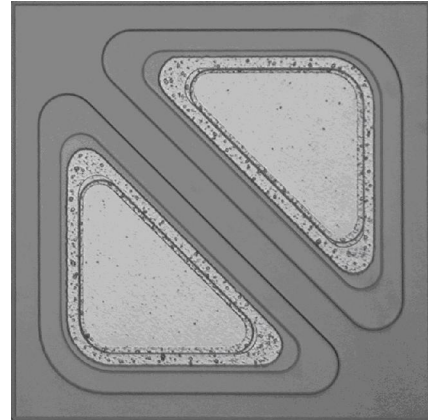


2KG037075NJL COMMON CATHODE DOUBLE DICE SWITCHING DIODE CHIPS**DESCRIPTION**

- 2KG037075NJL is a common cathode double dice switching diode fabricated in planar technology.
- The parameters of diode match well due to double dice on the same chip substrate.
- Optimized graph design suit for encapsulation bonding, and the interference is very small between two dice.
- The top electrodes material is Al, and the back-side electrodes material is Au.
- Chip size: 0.37 X 0.37 (mm)².



2KG037075NJL CHIP TOPOGRAPHY

2KG037075NJL ELECTRICAL CHARACTERISTICS (T_J=25°C)

Characteristics	Symbol	Test Conditions	Min.	Typ.	Max.	Unit
Forward Voltage	V _F	I _F =10mA.	--	--	1.0	V
		I _F =100mA.	0.62	0.9	1.2	V
Reverse Voltage	V _{BR}	I _B =100μA.	100	120	--	V
Reverse Current	I _R	V _R =20V.	--	--	25	nA
		V _R =75V.	--	--	5	μA
Diode Capacitance	C _d	f=1MHz; V _R =0.	--	1.9	4	pF
Reverse Recovery Time	t _{rr}	When switched from I _F =10mA to V _R =6V; R _L =100Ω; measured at I _R =1mA.	--	--	4	ns

Note: The electrical characteristic is single dice value.