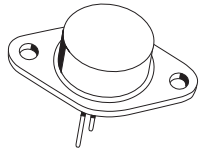


2N6031

PNP SILICON
POWER TRANSISTOR
140 VOLTS, 200 WATTS



TO-3 CASE

CentralTM
Semiconductor Corp.

DESCRIPTION:

The CENTRAL SEMICONDUCTOR 2N6031 is a 16 Ampere PNP Silicon Power Transistor designed for use in high power amplifiers and high voltage switching regulator circuits.

MARKING: FULL PART NUMBER

MAXIMUM RATINGS: ($T_C=25^\circ\text{C}$)

Collector-Base Voltage
Collector-Emitter Voltage
Emitter-Base Voltage
Continuous Collector Current
Peak Collector Current
Continuous Base Current
Power Dissipation
Operating and Storage Junction Temperature
Thermal Resistance

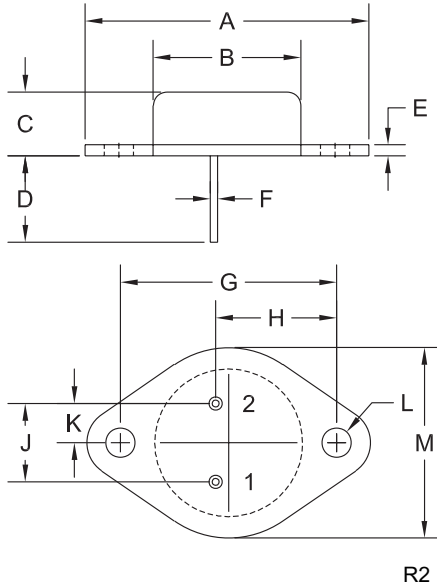
SYMBOL		UNITS
V_{CBO}	140	V
V_{CEO}	140	V
V_{EBO}	7.0	V
I_C	16	A
I_{CM}	20	A
I_B	5.0	A
P_D	200	W
T_J, T_{stg}	-65 to +200	$^\circ\text{C}$
θ_{JC}	0.875	$^\circ\text{C/W}$

ELECTRICAL CHARACTERISTICS: ($T_C=25^\circ\text{C}$ unless otherwise noted)

SYMBOL	TEST CONDITIONS	MIN	MAX	UNITS
I_{CBO}	$V_{CB}=140\text{V}$		2.0	mA
I_{CEX}	$V_{CE}=140\text{V}, V_{EB(off)}=1.5\text{V}$		2.0	mA
I_{CEX}	$V_{CE}=140\text{V}, V_{EB(off)}=1.5\text{V}, T_C=150^\circ\text{C}$		7.0	mA
I_{CEO}	$V_{CE}=70\text{V}$		2.0	mA
I_{EBO}	$V_{EB}=7.0\text{V}$		5.0	mA
BV_{CEO}	$I_C=200\text{mA}$	140		V
$V_{CE(SAT)}$	$I_C=10\text{A}, I_B=1.0\text{A}$		1.0	V
$V_{CE(SAT)}$	$I_C=16\text{A}, I_B=4.0\text{A}$		2.0	V
$V_{BE(SAT)}$	$I_C=10\text{A}, I_B=1.0\text{A}$		1.8	V
$V_{BE(ON)}$	$V_{CE}=2.0\text{V}, I_C=8.0\text{A}$		1.5	V
h_{FE}	$V_{CE}=2.0\text{V}, I_C=8.0\text{A}$	15	60	
h_{FE}	$V_{CE}=2.0\text{V}, I_C=16\text{A}$	4.0		
f_T	$V_{CE}=20\text{V}, I_C=1.0\text{A}, f=500\text{kHz}$	1.0		MHz
C_{ob}	$V_{CB}=10\text{V}, I_E=0, f=100\text{kHz}$		1000	pF
h_{fe}	$V_{CE}=10\text{V}, I_C=4.0\text{A}, f=1.0\text{kHz}$	15		

R0 (27-August 2009)

TO-3 CASE - MECHANICAL OUTLINE



SYMBOL	INCHES		MILLIMETERS	
	MIN	MAX	MIN	MAX
A	1.516	1.573	38.50	39.96
B (DIA)	0.748	0.875	19.00	22.23
C	0.250	0.450	6.35	11.43
D	0.433	0.516	11.00	13.10
E	0.054	0.065	1.38	1.65
F	0.035	0.045	0.90	1.15
G	1.177	1.197	29.90	30.40
H	0.650	0.681	16.50	17.30
J	0.420	0.440	10.67	11.18
K	0.205	0.225	5.21	5.72
L (DIA)	0.151	0.172	3.84	4.36
M	0.984	1.050	25.00	26.67

TO-3 (REV: R2)

LEAD CODE:

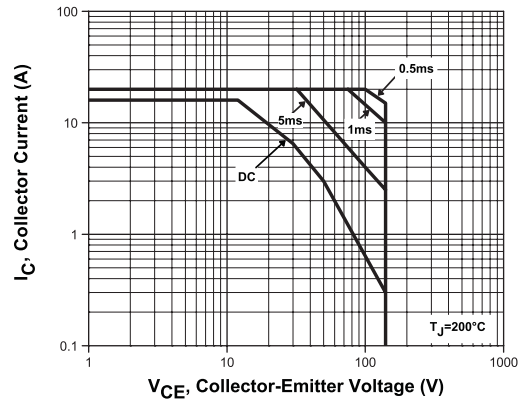
1) BASE

2) EMITTER

CASE) COLLECTOR

MARKING: FULL PART NUMBER

Safe Operating Area



OUTSTANDING SUPPORT AND SUPERIOR SERVICES



PRODUCT SUPPORT

Central's operations team provides the highest level of support to insure product is delivered on-time.

- Supply management (Customer portals)
- Inventory bonding
- Consolidated shipping options
- Custom bar coding for shipments
- Custom product packing

DESIGNER SUPPORT/SERVICES

Central's applications engineering team is ready to discuss your design challenges. Just ask.

- Free quick ship samples (2nd day air)
- Online technical data and parametric search
- SPICE models
- Custom electrical curves
- Environmental regulation compliance
- Customer specific screening
- Up-screening capabilities
- Special wafer diffusions
- PbSn plating options
- Package details
- Application notes
- Application and design sample kits
- Custom product and package development

CONTACT US

Corporate Headquarters & Customer Support Team

Central Semiconductor Corp.
145 Adams Avenue
Hauppauge, NY 11788 USA
Main Tel: (631) 435-1110
Main Fax: (631) 435-1824
Support Team Fax: (631) 435-3388
www.centalsemi.com

Worldwide Field Representatives:
www.centalsemi.com/wwreps

Worldwide Distributors:
www.centalsemi.com/wwdistributors

For the latest version of Central Semiconductor's **LIMITATIONS AND DAMAGES DISCLAIMER**, which is part of Central's Standard Terms and Conditions of sale, visit: www.centalsemi.com/terms