

2SA715

Rev.F Mar.-2016

描述 / Descriptions

TO-126 塑封封装 PNP 半导体三极管。Silicon PNP transistor in a TO-126 Plastic Package.

特征 / Features

与 2SC1162 互补。

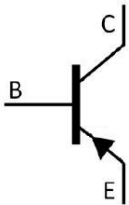
Complementary pair with 2SC1162.

用途 / Applications

用于低频功率放大。

Low frequency power amplifier applications.

内部等效电路 / Equivalent Circuit



引脚排列 / Pinning



PIN1 : Emitter

PIN 2 : Collector

PIN 3 : Base

放大及印章代码 / h_{FE} Classifications & Marking

| h_{FE} Classifications Symbol | B | C | D |
|------------------------------------|--------|---------|---------|
| h_{FE} Range | 60~120 | 100~200 | 160~320 |

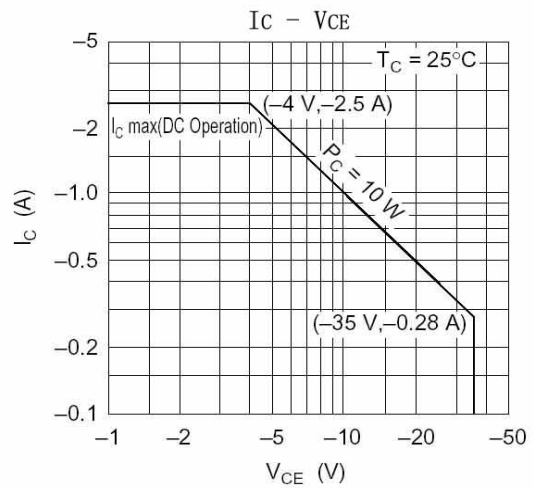
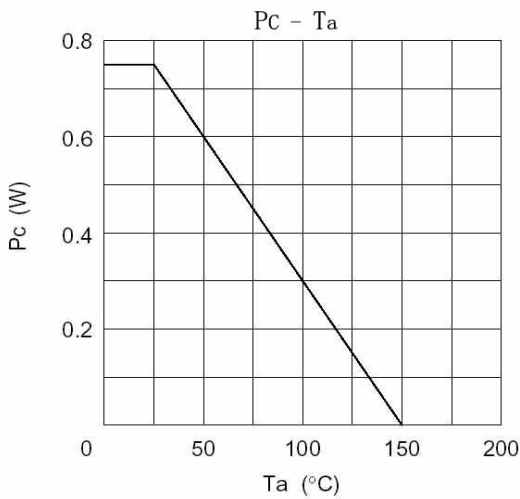
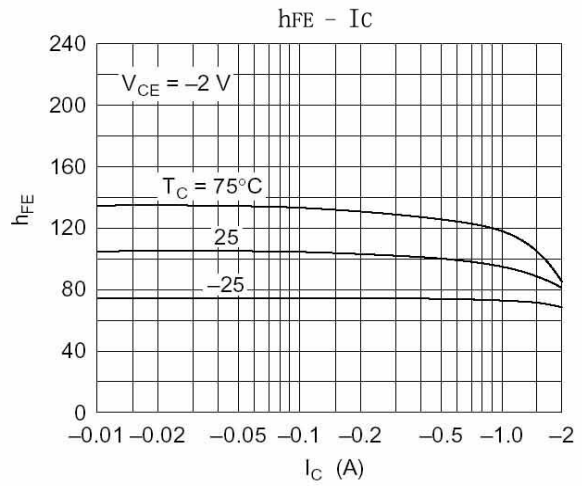
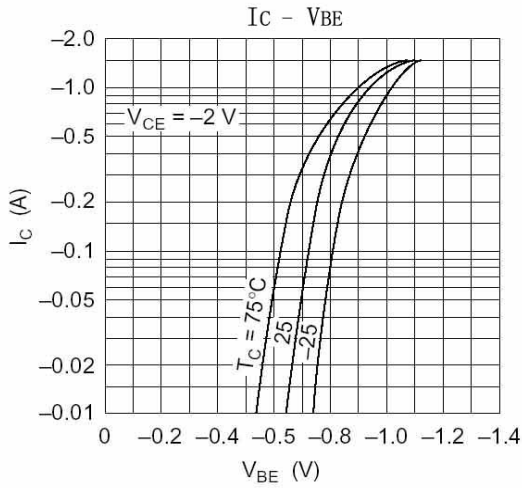
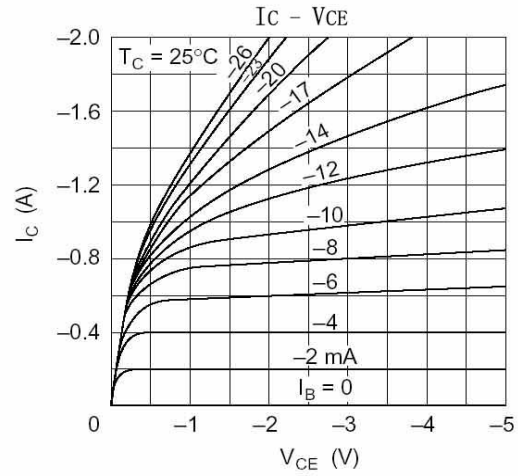
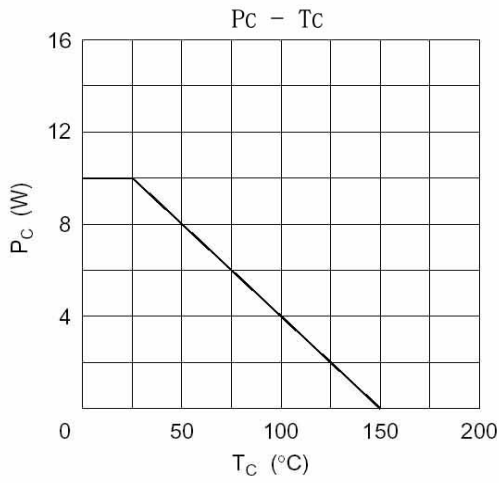
极限参数 / Absolute Maximum Ratings(Ta=25°C)

| 参数 Parameter | 符号 Symbol | 数值 Rating | 单位 Unit |
|--------------------------------|-----------------------------|--------------|------------|
| Collector to Base Voltage | V_{CBO} | -35 | V |
| Collector to Emitter Voltage | V_{CEO} | -35 | V |
| Emitter to Base Voltage | V_{EBO} | -5.0 | V |
| Collector Current - Continuous | I_C | -2.5 | A |
| Peak Collector Current | I_{CP} | -3.0 | A |
| Collector Power Dissipation | P_C | 750 | mW |
| Collector Power Dissipation | $P_C(T_c=25^\circ\text{C})$ | 10 | W |
| Junction Temperature | T_j | 150 | °C |
| Storage Temperature Range | T_{stg} | -55~150 | °C |

电性能参数 / Electrical Characteristics(Ta=25°C)

| 参数 Parameter | 符号 Symbol | 测试条件 Test Conditions | 最小值 Min | 典型值 Typ | 最大值 Max | 单位 Unit |
|---|---------------|--|------------|------------|------------|---------------|
| Collector to Base Breakdown Voltage | V_{CBO} | $I_C=-1.0\text{mA}$ $I_E=0$ | -35 | | | V |
| Collector to Emitter Breakdown Voltage | V_{CEO} | $I_C=-10\text{mA}$ $R_{BE}=\infty$ | -35 | | | V |
| Emitter to Base Breakdown Voltage | V_{EBO} | $I_E=-1.0\text{mA}$ $I_C=0$ | -5.0 | | | V |
| Collector Cut-Off Current | I_{CBO} | $V_{CB}=-35\text{V}$ $I_E=0$ | | | -20 | μA |
| DC Current Gain | $h_{FE(1)}$ | $V_{CE}=-2.0\text{V}$ $I_C=-0.5\text{A}$ | 60 | | 320 | |
| | $h_{FE(2)}$ | $V_{CE}=-2.0\text{V}$ $I_C=-1.5\text{A}$ | 20 | | | |
| Base to Emitter Saturation Voltage | V_{BE} | $V_{CE}=-2.0\text{V}$ $I_C=-1.5\text{A}$ | | -1.0 | -1.5 | V |
| Collector to Emitter Saturation Voltage | $V_{CE(sat)}$ | $I_C=-2.0\text{A}$ $I_B=-0.2\text{A}$ | | -0.5 | -1.0 | V |
| Transition Frequency | f_T | $V_{CE}=-2.0\text{V}$ $I_C=-0.2\text{A}$ | | 160 | | MHz |

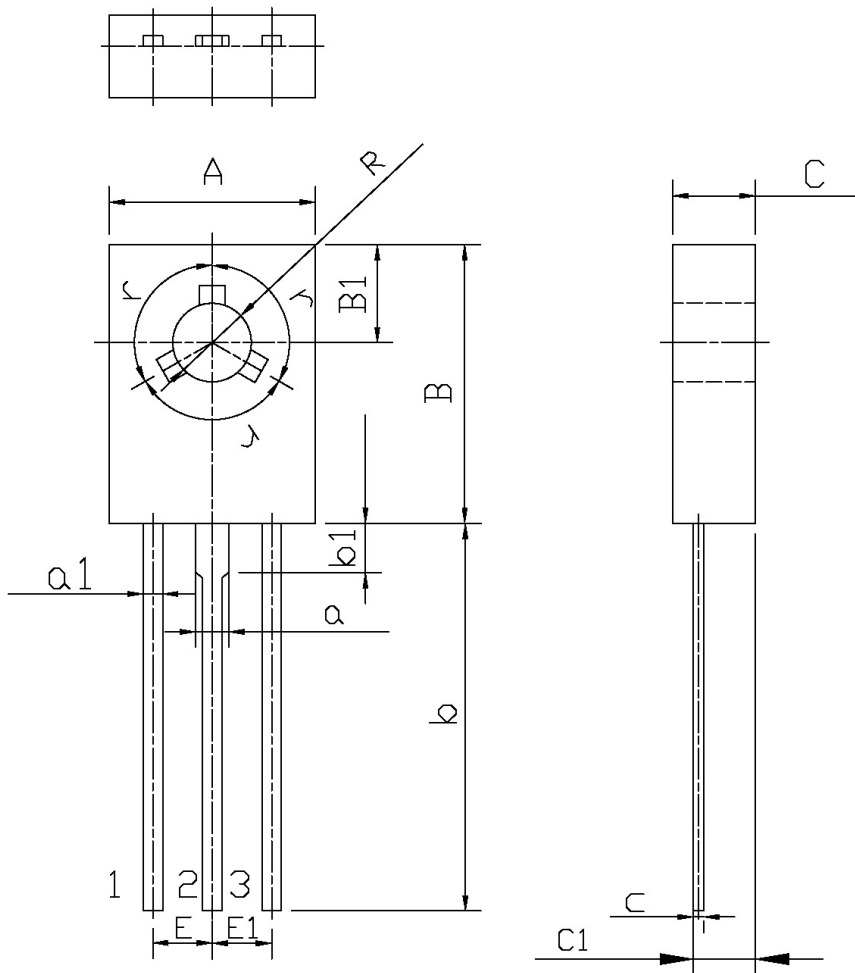
电参数曲线图 / Electrical Characteristic Curve



外形尺寸图 / Package Dimensions

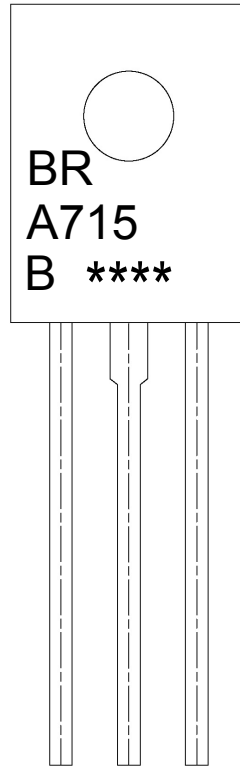
T0-126

单位: mm



| Symbol | Dimensions In Millimeters | | Symbol | Dimensions In Millimeters | |
|--------|---------------------------|------|--------|---------------------------|------|
| | Min | Max | | Min | Max |
| A | 7.8 | 8.2 | a1 | 0.66 | 0.86 |
| B | 10.6 | 11.0 | E | 2.1 | 2.5 |
| B1 | 3.6 | 4.0 | C | 2.7 | 2.9 |
| R | 2.9 | 3.3 | C1 | 1.57 | 1.77 |
| b | 14 | 16 | c | 0.3 | 0.6 |
| b1 | 1.9 | | a | 1.37 | |
| E1 | 2.1 | 2.5 | r | 120° | |

印章说明 / Marking Instructions



说明：

BR： 为公司代码

A715： 为型号代码

B： 为 h_{FE} 分档代码

****： 为生产批号代码，随生产批号变化。

Note:

BR: Company Code

A715: Product Type.

B: h_{FE} Classifications Symbol

****: Lot No. Code, code change with Lot No.

波峰焊温度曲线图(无铅) / Temperature Profile for Dip Soldering(Pb-Free)



说明：

- 1、预热温度 25 ~ 150°C，时间 60 ~ 90sec;
- 2、峰值温度 255±5°C，时间持续为 5±0.5sec;
- 3、焊接制程冷却速度为 2 ~ 10°C/sec.

Note:

- 1.Preheating:25~150°C, Time:60~90sec.
- 2.Peak Temp.:255±5°C, Duration:5±0.5sec.
3. Cooling Speed: 2~10°C/sec.

耐焊接热试验条件 / Resistance to Soldering Heat Test Conditions

温度：270±5°C

时间：10±1 sec.

Temp.:270±5°C

Time:10±1 sec

包装规格 / Packaging SPEC.

散件包装 / BULK

| Package Type 封装形式 | Units 包装数量 | | | | | Dimension 包装尺寸 (unit: mm ³) | | |
|----------------------|--------------------|-------------------------|------------------------|------------------------------|------------------------|---|-------------|-------------|
| | Units/Tube 只/套管 | Tubes/Inner Box 套管/盒 | Units/Inner Box 只/盒 | Inner Boxes/Outer Box 盒/箱 | Units/Outer Box 只/箱 | Tube 套管 | Inner Box 盒 | Outer Box 箱 |
| TO-126/F | 500 | 6 | 3,000 | 5 | 15,000 | 135×190 | 237×172×102 | 560×245×195 |

套管包装 / TUBE

| Package Type 封装形式 | Units 包装数量 | | | | | Dimension 包装尺寸 (unit: mm ³) | | |
|----------------------|--------------------|-------------------------|------------------------|------------------------------|------------------------|---|-------------|-------------|
| | Units/Tube 只/套管 | Tubes/Inner Box 套管/盒 | Units/Inner Box 只/盒 | Inner Boxes/Outer Box 盒/箱 | Units/Outer Box 只/箱 | Tube 套管 | Inner Box 盒 | Outer Box 箱 |
| TO-126/F | 65 | 26 | 1,690 | 5 | 8,450 | 532×31×5.6 | 555×164×50 | 575×290×180 |

使用说明 / Notices