

2SC2231 2SC2231A

SILICON NPN TRIPLE DIFFUSED TYPE (PCT PROCESS)

HIGH VOLTAGE GENERAL AMPLIFIER APPLICATIONS.
COLOR TV CLASS B SOUND OUTPUT APPLICATIONS.

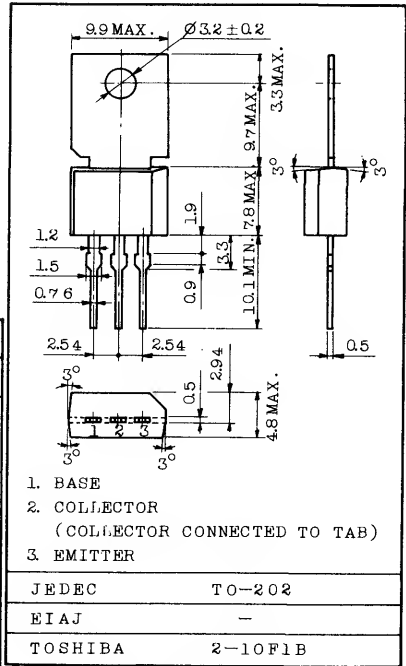
FEATURES:

. High Voltage : $V_{CE0}=180V$ (2SC2231A)

MAXIMUM RATINGS ($T_a=25^{\circ}C$)

CHARACTERISTIC		SYMBOL	RATING	UNIT
Collector-Base Voltage		V_{CBO}	200	V
Collector-Emitter Voltage	2SC2231	V_{CEO}	160	V
	2SC2231A		180	
Emitter-Base Voltage		V_{EBO}	5	V
Collector Current		I_C	200	mA
Base Current		I_B	100	mA
Collector Power Dissipation	$T_a=25^{\circ}C$	P_C	1.5	W
	$T_c=25^{\circ}C$		12	
Junction Temperature		T_j	150	$^{\circ}C$
Storage Temperature Range		T_{stg}	-55~150	$^{\circ}C$

Unit in mm

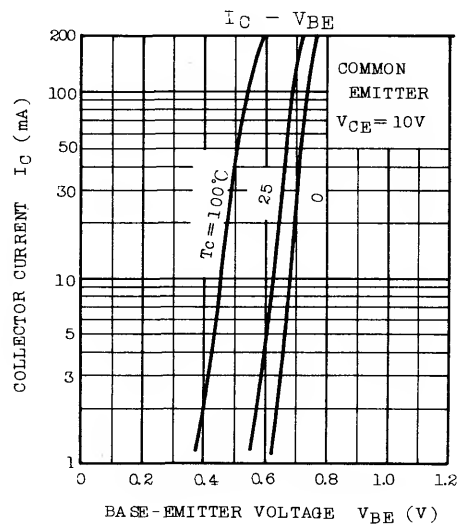
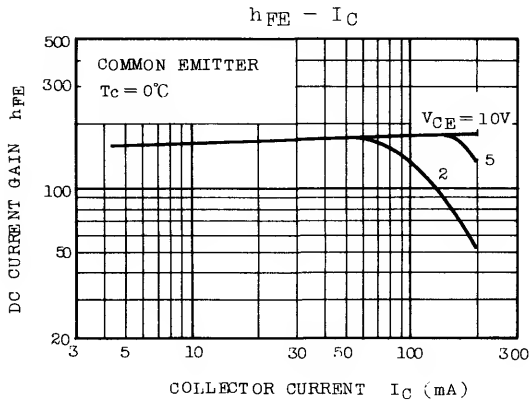
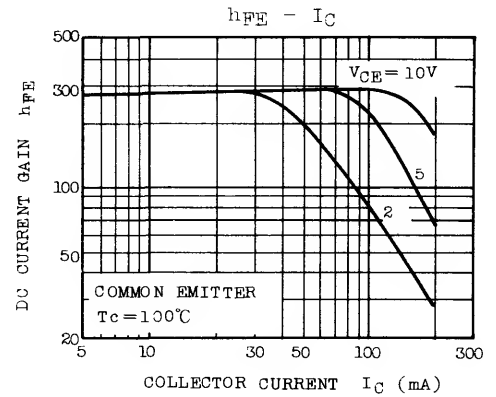
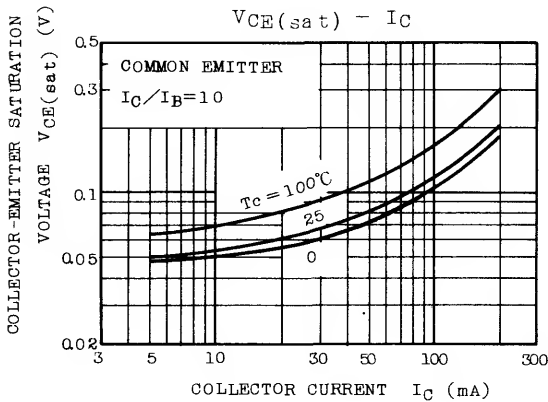
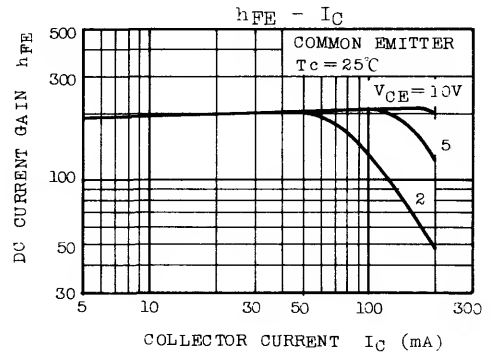
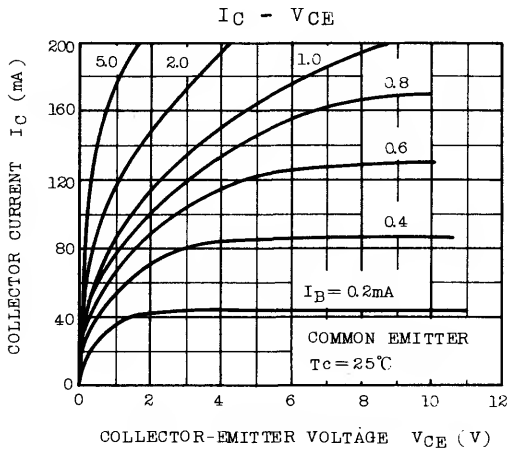


Weight : 1.4g

ELECTRICAL CHARACTERISTICS ($T_a=25^{\circ}C$)

CHARACTERISTIC	SYMBOL	TEST CONDITION	MIN.	TYP.	MAX.	UNIT
Collector Cut-off Current	I_{CBO}	$V_{CB}=200V, I_E=0$	-	-	0.1	μA
Emitter Cut-off Current	I_{EBO}	$V_{EB}=5V, I_C=0$	-	-	0.1	μA
DC Current Gain	$h_{FE}(1)$ (Note)	$V_{CE}=10V, I_C=50mA$	100	-	320	-
	$h_{FE}(2)$	$V_{CE}=10V, I_C=150mA$	80	-	-	
Collector-Emitter Saturation Voltage	$V_{CE(sat)}$	$I_C=200mA, I_B=20mA$	-	-	1.0	V
Base-Emitter Voltage	V_{BE}	$V_{CE}=10V, I_C=5mA$	0.55	0.65	0.75	V
Transition Frequency	f_T	$V_{CE}=10V, I_C=50mA$	50	-	-	MHz
Collector Output Capacitance	C_{ob}	$V_{CB}=10V, I_E=0, f=1MHz$	-	-	10	pF

Note : $h_{FE}(1)$ Classification 0:100~200, Y:160~320



2SC2231 • 2SC2231A

