

### 描述 / Descriptions

TO-220F 塑封封装 NPN 半导体三极管。Silicon NPN transistor in a TO-220F Plastic Package.

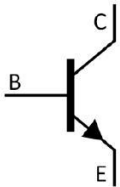
### 特征 / Features

击穿电压高，集电极输出电容小。  
High  $V_{CE0}$ , small collector output capacitance.

### 用途 / Applications

用于彩色电视机色度输出。  
Color TV chroma output applications.

### 内部等效电路 / Equivalent Circuit



### 引脚排列 / Pinning



PIN1 : Base      PIN 2 : Collector      PIN 3 : Emitter

### 放大及印章代码 / $h_{FE}$ Classifications & Marking

见印章说明。See Marking Instructions.

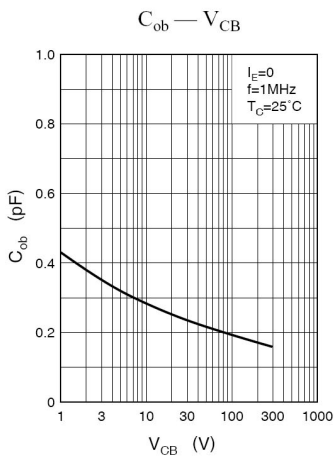
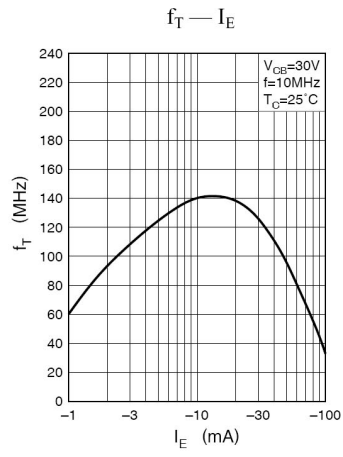
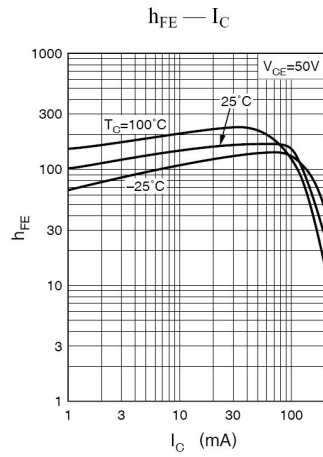
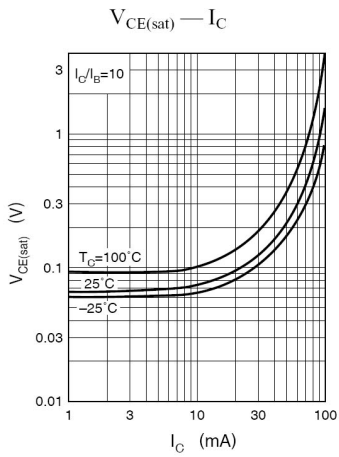
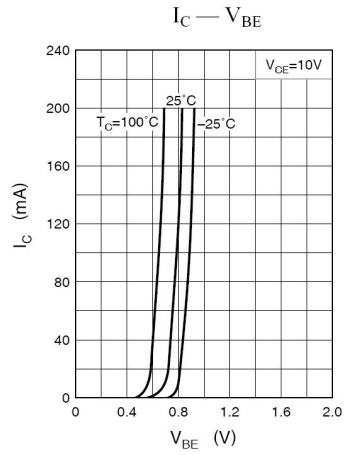
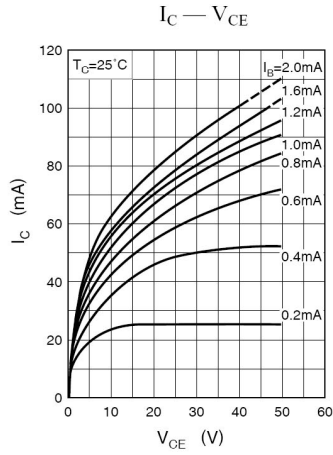
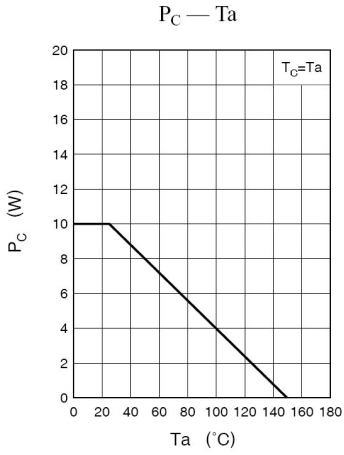
**极限参数 / Absolute Maximum Ratings(Ta=25°C)**

| 参数<br>Parameter                       | 符号<br>Symbol          | 数值<br>Rating | 单位<br>Unit |
|---------------------------------------|-----------------------|--------------|------------|
| Collector to Base Voltage             | $V_{CBO}$             | 300          | V          |
| Collector to Emitter Voltage          | $V_{CEO}$             | 300          | V          |
| Emitter to Base Voltage               | $V_{EBO}$             | 7.0          | V          |
| Collector Current - Continuous        | $I_C$                 | 100          | mA         |
| Collector Current – Continuous(Pulse) | $I_{CP}$              | 200          | mA         |
| Collector Power Dissipation           | $P_C$                 | 2.0          | W          |
|                                       | $P_C(T_c=25^\circ C)$ | 10           | W          |
| Junction Temperature                  | $T_j$                 | 150          | °C         |
| Storage Temperature Range             | $T_{stg}$             | -55~150      | °C         |

**电性能参数 / Electrical Characteristics(Ta=25°C)**

| 参数<br>Parameter                         | 符号<br>Symbol  | 测试条件<br>Test Conditions              | 最小值<br>Min | 典型值<br>Typ | 最大值<br>Max | 单位<br>Unit |
|-----------------------------------------|---------------|--------------------------------------|------------|------------|------------|------------|
| Collector to Base Breakdown Voltage     | $V_{CBO}$     | $I_C=10\mu A$ $I_E=0$                | 300        |            |            | V          |
| Collector to Emitter Breakdown Voltage  | $V_{CEO}$     | $I_C=1.0mA$ $I_B=0$                  | 300        |            |            | V          |
| Emitter to Base Breakdown Voltage       | $V_{EBO}$     | $I_E=10\mu A$ $I_C=0$                | 7.0        |            |            | V          |
| Collector Cut-Off Current               | $I_{CEO}$     | $V_{CE}=200V$ $I_B=0$                |            |            | 10         | $\mu A$    |
| DC Current Gain                         | $h_{FE}$      | $V_{CE}=50V$ $I_C=5.0mA$             | 50         |            | 250        |            |
| Collector to Emitter Saturation Voltage | $V_{CE(sat)}$ | $I_C=30mA$ $I_B=3.0mA$               |            |            | 1.5        | V          |
| Base to Emitter Voltage                 | $V_{BE}$      | $V_{CE}=10V$ $I_C=30mA$              |            |            | 1.2        | V          |
| Transition Frequency                    | $f_T$         | $V_{CE}=30V$ $I_C=20mA$<br>$f=10MHz$ | 70         | 140        |            | MHz        |
| Collector output capacitance            | $C_{ob}$      | $V_{CB}=30V$ $I_E=0$<br>$f=1.0MHz$   |            | 2.7        |            | pF         |

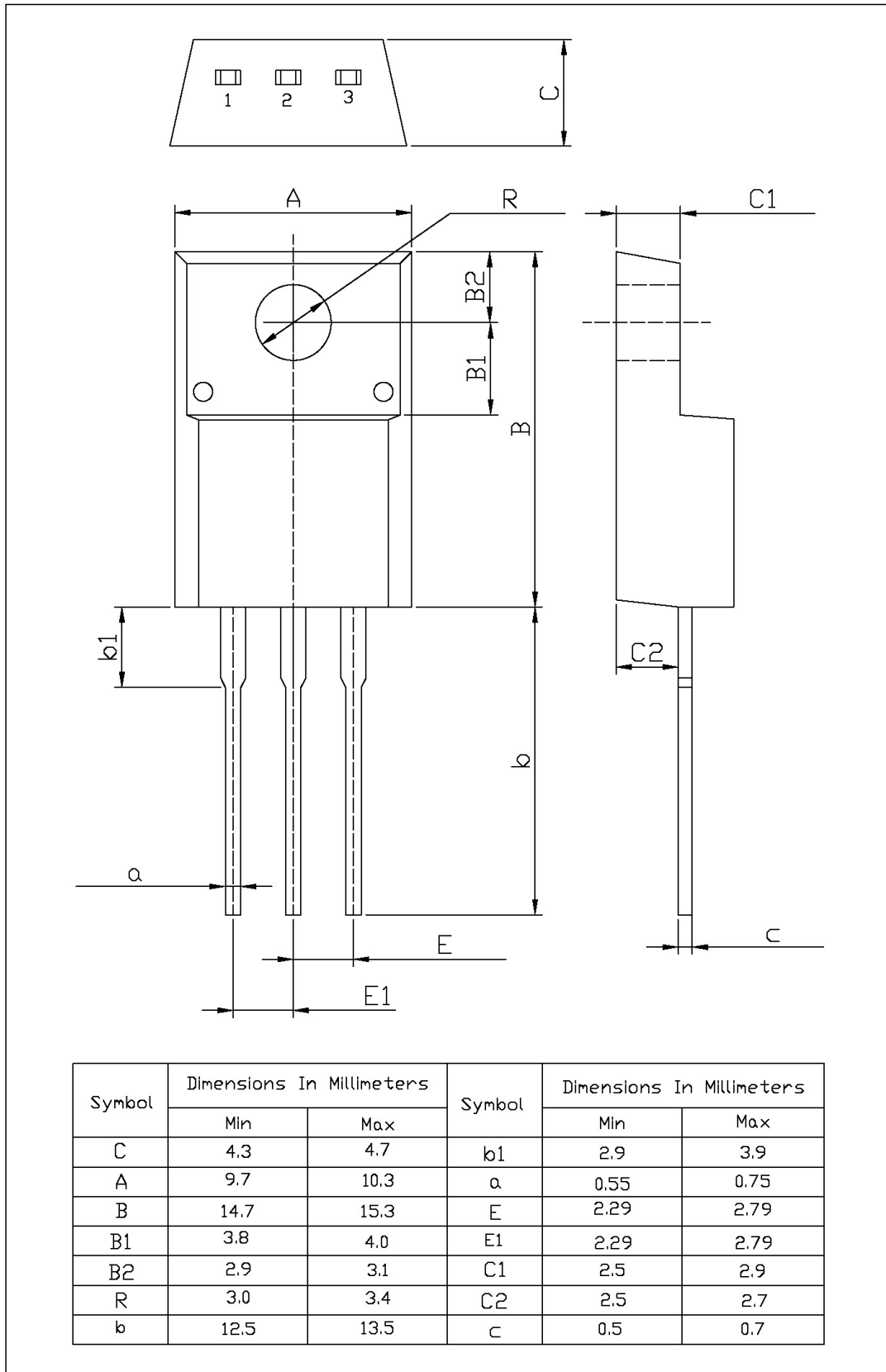
**电参数曲线图 / Electrical Characteristic Curve**



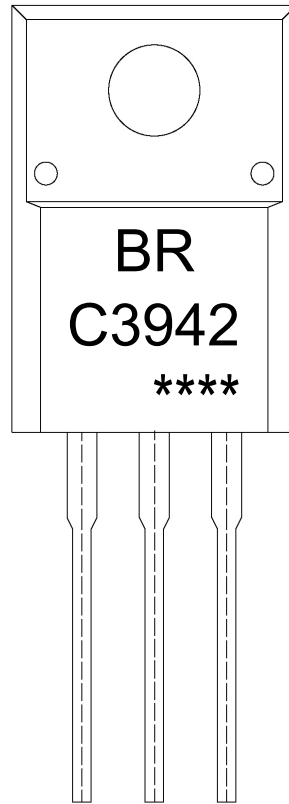
外形尺寸图 / Package Dimensions

T0-220F

单位: mm



印章说明 / Marking Instructions



说明：

BR： 为公司代码

C3942： 为型号代码

\*\*\*\*： 为生产批号代码，随生产批号变化。

Note:

BR: Company Code.

C3942: Product Type.

\*\*\*\*: Lot No. Code, code change with Lot No.

**波峰焊温度曲线图(无铅) / Temperature Profile for Dip Soldering(Pb-Free)**



说明：

- 1、预热温度 25 ~ 150°C，时间 60 ~ 90sec;
- 2、峰值温度 255±5°C，时间持续为 5±0.5sec;
- 3、焊接制程冷却速度为 2 ~ 10°C/sec.

Note:

- 1.Preheating:25~150°C, Time:60~90sec.
- 2.Peak Temp.:255±5°C, Duration:5±0.5sec.
3. Cooling Speed: 2~10°C/sec.

**耐焊接热试验条件 / Resistance to Soldering Heat Test Conditions**

温度：270±5°C

时间：10±1 sec.

Temp.:270±5°C

Time:10±1 sec

**包装规格 / Packaging SPEC.**

散件包装 / BULK

| Package Type<br>封装形式 | Units 包装数量       |                       |                        |                              |                        | Dimension 包装尺寸 (unit: mm <sup>3</sup> ) |             |             |
|----------------------|------------------|-----------------------|------------------------|------------------------------|------------------------|-----------------------------------------|-------------|-------------|
|                      | Units/Bag<br>只/袋 | Bags/Inner Box<br>袋/盒 | Units/Inner Box<br>只/盒 | Inner Boxes/Outer Box<br>盒/箱 | Units/Outer Box<br>只/箱 | Bag 袋                                   | Inner Box 盒 | Outer Box 箱 |
| TO-220/F             | 200              | 10                    | 2,000                  | 5                            | 10,000                 | 135×190                                 | 237×172×102 | 560×245×195 |

套管包装 / TUBE

| Package Type<br>封装形式 | Units 包装数量         |                         |                        |                              |                        | Dimension 包装尺寸 (unit: mm <sup>3</sup> ) |             |             |
|----------------------|--------------------|-------------------------|------------------------|------------------------------|------------------------|-----------------------------------------|-------------|-------------|
|                      | Units/Tube<br>只/套管 | Tubes/Inner Box<br>套管/盒 | Units/Inner Box<br>只/盒 | Inner Boxes/Outer Box<br>盒/箱 | Units/Outer Box<br>只/箱 | Tube 套管                                 | Inner Box 盒 | Outer Box 箱 |
| TO-220/F             | 50                 | 20                      | 1,000                  | 5                            | 5,000                  | 532×31.4×5.5                            | 555×164×50  | 575×290×180 |

**使用说明 / Notices**