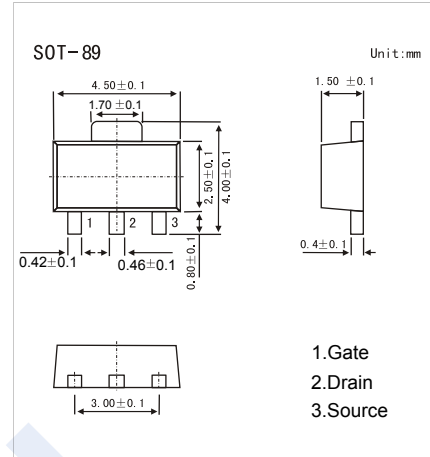
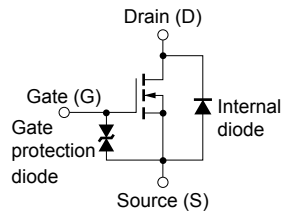


N-Channel MOSFET

2SK2111-HF

Features

- $V_{DS} (V) = 60V$
- $I_D = 1 A$
- $R_{DS(ON)} < 0.45 \Omega$ ($V_{GS} = 10V$)
- $R_{DS(ON)} < 0.6 \Omega$ ($V_{GS} = 4V$)
- Pb-Free Package May be Available.
The G-Suffix Denotes a Pb-Free Lead Finish



Absolute Maximum Ratings $T_a = 25^\circ C$

Parameter	Symbol	Rating	Unit
Drain-Source Voltage	V_{DS}	60	V
Gate-Source Voltage	V_{GS}	± 20	
Continuous Drain Current	I_D	1	A
Pulsed Drain Current (Note.1)	I_{DM}	2	
Power Dissipation	P_D	2	W
Junction Temperature	T_J	150	$^\circ C$
Storage Temperature Range	T_{stg}	-55 to 150	

Note.1: $PW \leq 10ms$, Duty Cycle $\leq 50\%$

Electrical Characteristics $T_a = 25^\circ C$

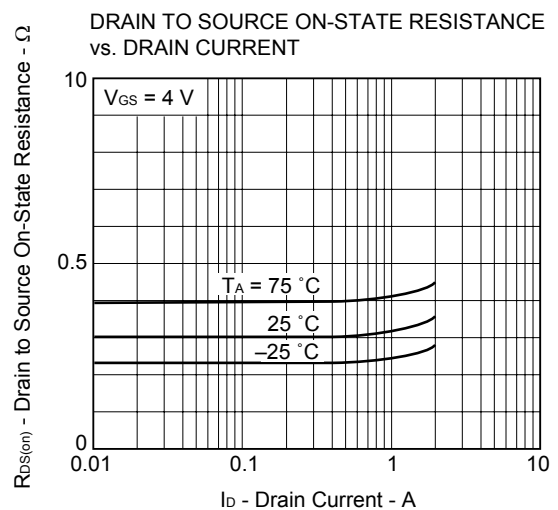
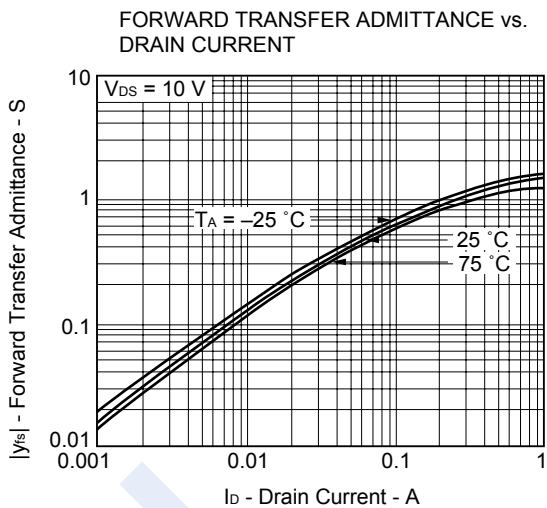
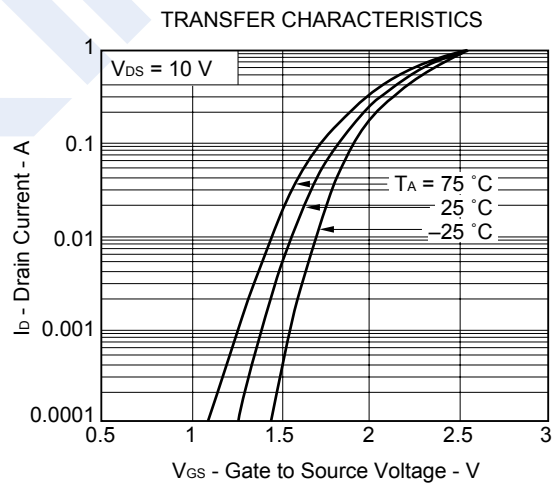
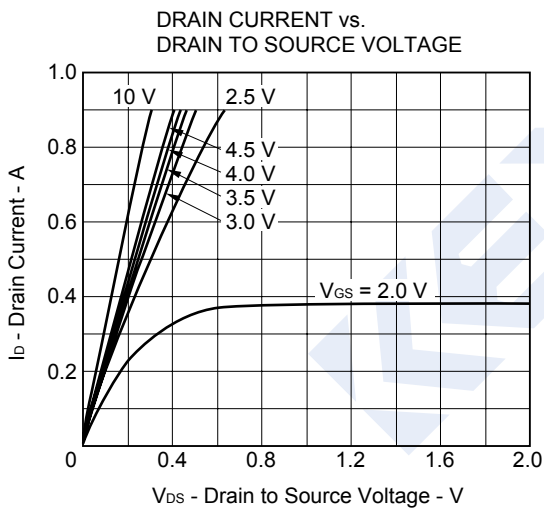
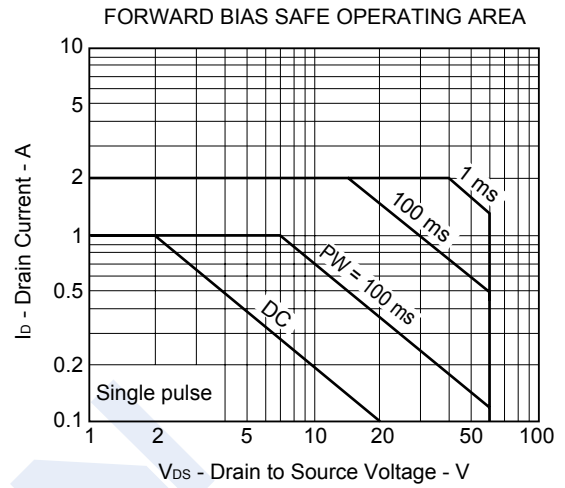
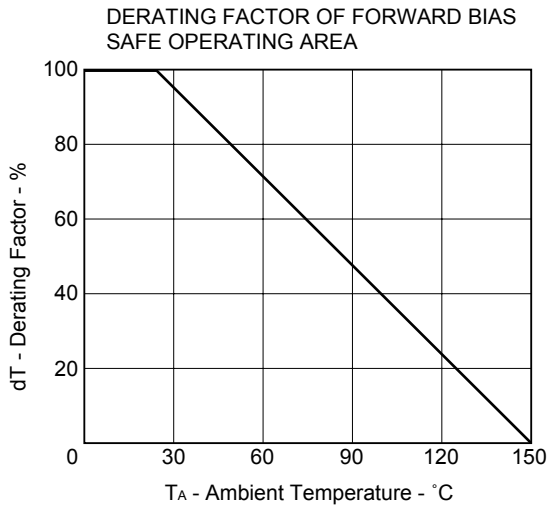
Parameter	Symbol	Test Conditions	Min	Typ	Max	Unit
Drain-Source Breakdown Voltage	V_{DSS}	$I_D=250 \mu A$, $V_{GS}=0V$	60			V
Zero Gate Voltage Drain Current	I_{DSS}	$V_{DS}=60V$, $V_{GS}=0V$			1	μA
Gate-Body Leakage Current	I_{GSS}	$V_{DS}=0V$, $V_{GS}=\pm 20V$			± 10	μA
Gate Cutt-off Voltage	$V_{GS(off)}$	$V_{DS}=10V$, $I_D=1mA$	0.8		2	V
Static Drain-Source On-Resistance	$R_{DS(on)}$	$V_{GS}=10V$, $I_D=0.5A$			0.45	Ω
		$V_{GS}=4V$, $I_D=0.5A$			0.6	
Forward Transconductance	g_{FS}	$V_{DS}=10V$, $I_D=0.5A$	0.4			S
Input Capacitance	C_{iss}	$V_{GS}=0V$, $V_{DS}=10V$, $f=1MHz$		170		pF
Output Capacitance	C_{oss}			87		
Reverse Transfer Capacitance	C_{rss}			32		
Turn-On DelayTime	$t_{d(on)}$				2.8	
Turn-On Rise Time	t_r	$V_{GS(on)}=10V$, $V_{DS}=25V$, $I_D=0.5A$, $R_L=50 \Omega$, $R_G=10 \Omega$		2.3		
Turn-Off DelayTime	$t_{d(off)}$			55		
Turn-Off Fall Time	t_f			27		

Marking

Marking	NU F
---------	------

N-Channel MOSFET 2SK2111-HF

Typical Characteristics



N-Channel MOSFET 2SK2111-HF

Typical Characteristics

