

Single-Phase Silicon Bridge Rectifier – WOM Package

2W005 to 2W10

MERITEK

FEATURE

- Surge Overload rating: 50 amperes peak
- Forward Current: 2.0A
- Reverse voltage: 50~1000V
- Terminal: Plated leads solderable per MIL-STD-202, method 208
- UL/cUL safety approved: certification No: 223027



ELECTRICAL CHARACTERISTICS

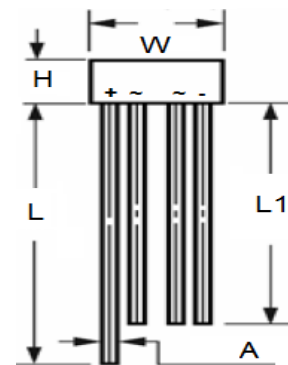


Parameter	Symbols	2W005	2W01	2W02	2W04	2W06	2W08	2W10	Unit
Maximum Recerrent Peak Reverse Voltage	V_{RRM}	50	100	200	400	600	800	1000	V
Maximum RMS Voltage	V_{RMS}	35	70	140	280	420	560	700	V
Maximum DC Blocking Voltage	V_{DC}	50	100	200	400	600	800	1000	V
Maximum Average Forward Rectified Current .375"(9.5mm) Lead Length at T _A =25°C	$I_{(AV)}$	2.0							A
Peak Forward Surge Current, 8.3ms single half-sine-wave superimposed on rated load (JEDEC method)	I_{FSM}	50.0							A
Max. Forward Voltage at 2.0A DC and 25°C	V_F	1.1							V
Max. Reverse Current at Rated DC Blocking Voltage	I_R	10.0 at T _A =20°C, 500 at T _A =100°C							μA
Operating Temperature Range	T_J	-55 to +125							°C
Storage Temperature Range	T_{stg}	-55 to +125							°C

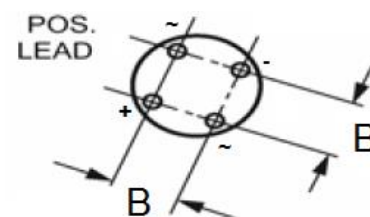
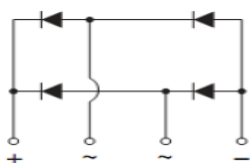
Rating at 25°C, ambient temperature unless otherwise specified. Single phase, half wave, 60 Hz, resistive or inductive load.
For capacitive load, derate current by 20%.

DIMENSIONS

Item	Milimeters	
	Min.	Max.
W	8.6	9.1
H	5.0	5.5
L	30.5	-
L1	25.4	-
A	0.7	0.8
B	4.6	5.6



FUNCTIONAL DIAGRAM



Single-Phase Silicon Bridge Rectifier – WOM Package

2W005 to 2W10

MERITEK

RATINGS AND CHARACTERISTICS CURVES

Fig.1 Maximum Non-Repetitive Forward Surge Current Per Bridge Element

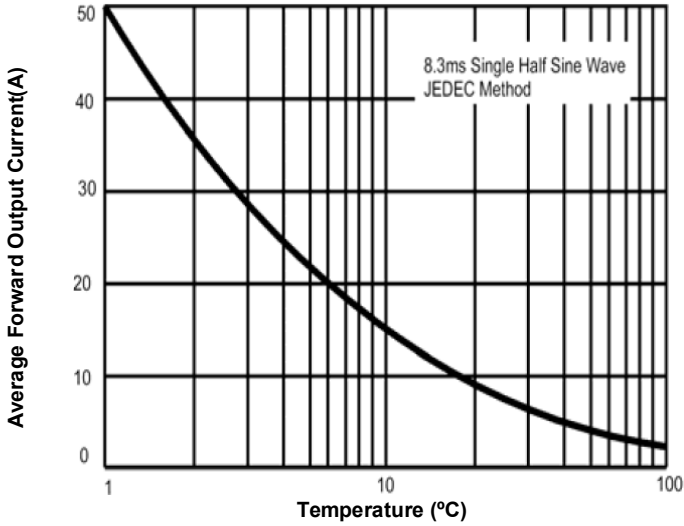


Fig. 2. Maximum Current Derating Curve Output Rectified Current

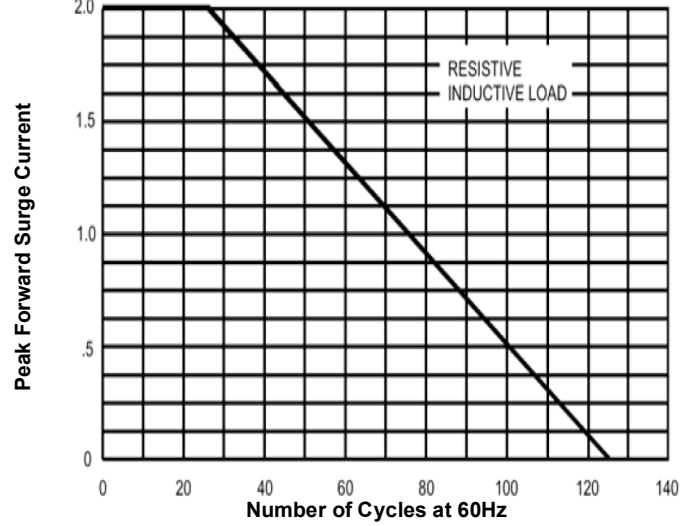


Fig. 3. Typical Forward Characteristic Per Leg

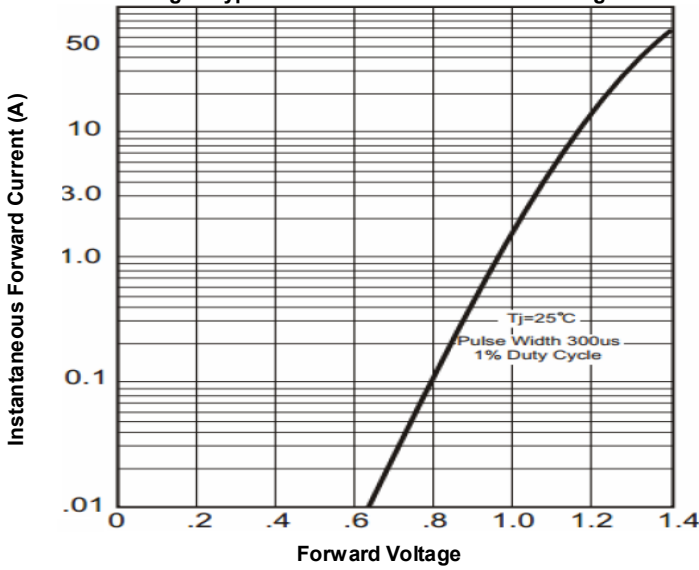


Fig. 4. Typical Reverse Characteristics Per Bridge Element

