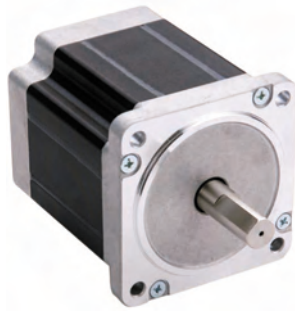


34HC Series: 1.2° - Size 34, 3 Phase



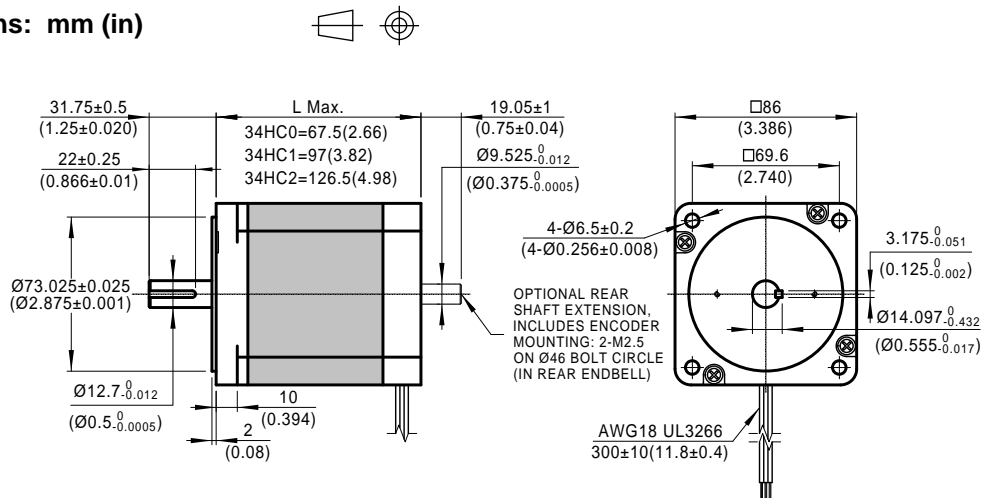
- Phases 3
- Steps / Revolution 300
- Step Accuracy ±5%
- Shaft Load (20,000 Hours at 1000 RPM)
 - Axial 65 N (15 Lbs.) Push
155 N (35 Lbs.) Pull
 - Radial 220 N (50 Lbs.) At Flat Center
- IP Rating 40
- Approvals RoHS
- Operating Temp. -20°C to +50°C
- Insulation Class B, 130°C
- Insulation Resistance 100 MegOhms

34HC - 3 Phase

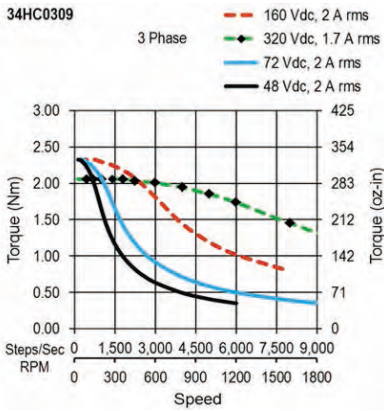
Length	Model Number	Connect	Rated Current	Holding Torque		Winding Ohms mH		Detent Torque		Rotor Inertia		Motor Weight	
	Single Shaft	P=Plug L=Leads	Amps (mounted)	Nm Typ.	oz-in TYP.	±10% @20 C	Typ.	mNm oz-in	g cm ² oz-in ²	kg Lbs			
67 mm (2.64 in.) 1 Stack	^ 34HC0309	L	2	2.80	400	5	19.1	100 14	1100 6	1.6 3.5			
	^ 34HC0310	L	3	2.80	400	2.3	8.4						
	^ 34HC0305	L	5.8	2.70	380	0.54	1.95						
96.5 mm (3.8 in.) 2 Stack	^ 34HC1308	L	2	5.40	760	6	28	230 33	1850 10	2.7 6			
	^ 34HC1309	L	3	5.30	750	2.5	12						
	^ 34HC1305	L	5.8	5.00	710	0.62	2.7						
126 mm (4.96 in.) 3 Stack	^ 34HC2310	L	2	6.70	950	6.8	36	350 50	2750 15	3.8 8.4			
	^ 34HC2311	L	3	6.80	960	3.3	16.8						
	^ 34HC2306	L	5.8	6.80	960	0.88	4.5						

^ Preferred model

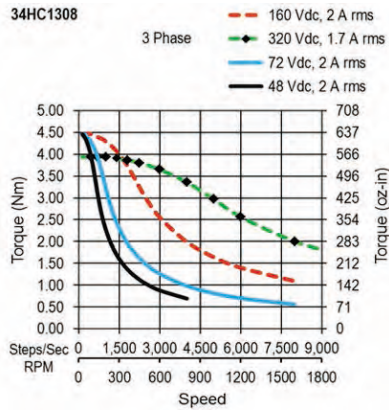
Dimensions: mm (in)



34HC0



34HC1



34HC2

