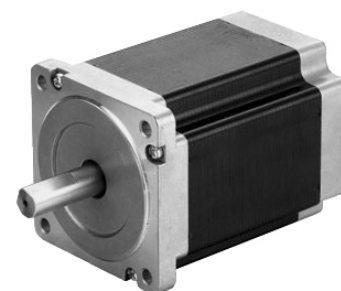


86mm(3.39in.)

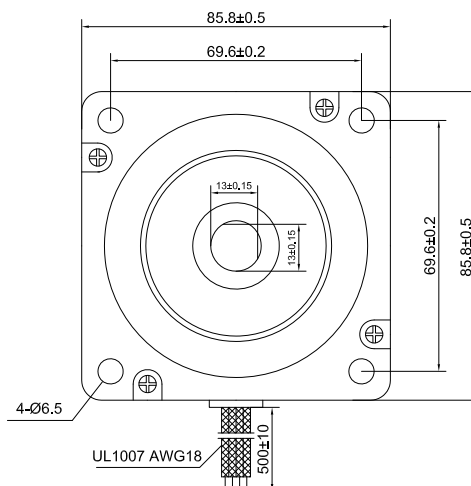
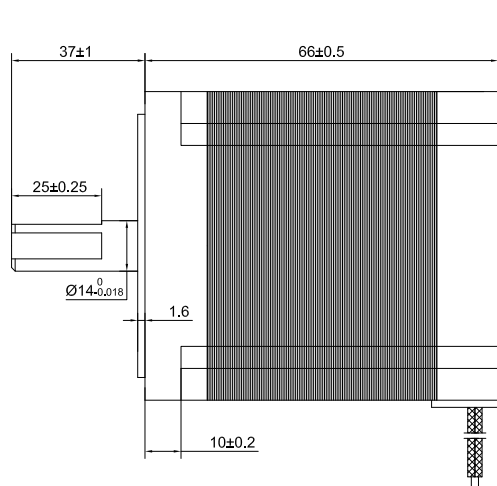
Step Angle 1.2° 34HS 3-Phase Type

Common Rating

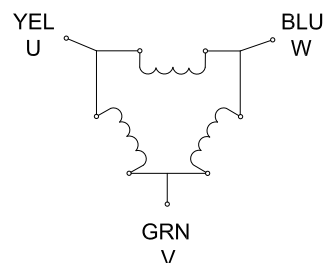
Item	Specification
Step Angle Accuracy	±5% (full step, no load)
Temperature Rise	80°C Max. (rated current, 2 phase on)
Ambient Temperature	-10°C ~ +50°C
Insulation Resistance	100MΩ Min. 500VDC
Dielectric Strength	500VAC for one minute



Dimension Unit = mm(in.)



Wiring Diagram



Excitation Sequence

STEP	1	2	3	4	5	6
U	+		-	-		+
V	-	-		+	+	
W		+	+		-	-

Specifications

Model	Torque		Voltage	Current	Resistance	Inductance	Inertia	# of Leads	Weight		Length "L"	
	N.m	lb.ft	V/Phase	A/Phase	Ohm/Phase	mH/Phase	g.cm ²		Kg	mm	in	
34HT27-4006S	2.3	1.7	4	4	1	4	1100	6	1.8	68	2.68	
34HT27-1756S	2.3	1.7	7.4	1.75	4.25	12.3	1100	6	1.8	68	2.68	
34HT38-5806S	4.5	3.3	4.6	5.8	0.8	3	2320	6	2.8	97	3.82	
34HT38-2006S	4.5	3.3	10.8	2	5.4	23	2320	6	2.8	97	3.82	
34HT50-5206S	6.8	5.0	13	5.2	2.5	13.5	3300	6	3.8	127	5.00	

* Specify -S for Single Shaft; -D for Double Shaft * All motor's specifications are based on full-step constant current operation